

AOS VALIANT

45M MAINTENANCE / UTILITY VESSEL



PRINCIPAL PARTICULARS

Length Overall:	45.00 m
Length LBP:	40.52 m
Breadth Moulded:	14.20 m
Depth Moulded:	4.50 m
Draft Maximum:	3.50 m
Year Built:	2018
GRT/NRT:	1182 / 354
Class:	ABS
Flag:	PANAMA
Call Sign:	HP8627

CARGO CAPACITIES

Deadweight:	342.26 T
Work Cargo Space:	200 m ²
W/C Design Load:	5 T/m ²
Potable Water:	161.4 m ³
Ship/Cargo FO:	352.6 m ³
Ballast/Drill Water:	251.3 m ³
Lubricating Oil:	11.6 m ³
Dirty Oil:	10.3 m ³
Sewage Holding Tank:	10.7 m ³
Bilge Tank:	10.3 m ³

PROPULSION SYSTEM

Main Engines:	2 x 1300 BHP @ 2100 RPM CAT C32, IMO-TII, Heavy Duty
Reduction Gears:	REINTJES GMBH-LAF 675L K31A
Main Generator:	2 x Cummins, 380KW, 60Hz, 440V CCFJ380-Z-W-MYCM
Main Alternator:	2 x Leroy Somer, LSAM 47.2 M7
Shaft Generator:	2 x Leroy Somer, 600kW, 60Hz LSAM 49.3 M6
Emergency Generator:	1 x Cummins, 90 KW, 60Hz, 450V CCFJ90-Y-W-MYCM Alternator: LSAM 44.3 S5
Bow Thruster:	1 x 6T CPP – CAT MTT113 CL-02
Propellers:	2 x CPP – CAT – MPP 490, 4 Blades
Rudders:	2 x High Lift Flap Spade Type
Steering Gear:	2 x JASTRAM Electro Hydraulic Independent Type, Twin S2-40-1-35
Maintenance Compressors:	2 x RENNER RSF-132 / 22230 L/min or 785 ft ³ /min @ 8.50 Bar
Compressed Air Dryer:	1 x Buran Donaldson 1175 m ³ /hr @ Maximum 1.60 Mpa

PERFORMANCE

Maximum Speed:	
Economical Speed:	10.0 knots, 85% MCR

DECK EQUIPMENT

Windlass:	1 MacGregor x 5T @ 9.0m/min
Anchors:	2 x 1255 Kg
Chains:	Total of 660 m x 30 mm
Capstan:	2 x 5T @ 15 m/min
Tugger Winch:	2 x 5T @ 10 m/min
Deck Crane:	1 MacGregor x Electro Hydraulic SWL: 20 T @ 4m Working Radius 4 T @ 20 m Working Radius 30 m Boom Extension

DISCHARGE RATES

FW Cargo Pump:	90 m ³ /hr @ 30m head
FO Cargo Pump:	92 m ³ /hr @ 38.2m head
Dirty Oil/Sludge Pump:	5 m ³ /hr @ 45 m head
Fire/GS/Bilge/Ballast pump:	2 x 80 m ³ @ 60 m head
Bilge Pump:	2 x 35 m ³ /hr @ 25 m head 1 x 2 m ³ /hr @ 25 m head
Emergency Fire Pump:	1 x 35 m ³ /hr @ 50 m head

ACCOMMODATION

Configuration:	
Single Cabin:	1 Man x 4
Twin Cabin:	2 Men x 15
Total:	34 Men
Accommodation is fully air conditioned.	

GALLEY & LAUNDRY

Electric Cooking Range:	1 x 4 Hot Plates
Refrigerator Capacity:	300 Litres
Freezer/Chiller Room Capacity:	11.5 m ³ / 12.5 m ³
Electric Water Boilers:	2 x 30 Litres
Washing Machines:	3 x 10 Kgs
Dryers:	3 x 10 Kgs
Foldable Iron:	1 with Ironing Table

FIRE-FIGHTING

CO2 System: Engine Room, Paint Locker and Galley

MISCELLANEOUS

Sewage Treatment:	1 x Treatment Plant for 40 Men Sewage Discharge Pump 3.0 m ³ /hr
Oily Water Separator:	1.0 m ³ /hr
Freshwater Maker:	1 Set / 8.0 T Per Day

Main & Emergency Switch Boards

(Include PMS): SAIERNICO

RADIO AND NAVIGATION

GMDSS (A1+A2+A3)	FURUNO FS-2575
Radar:	1 Furuno x FAR-2117-D, X Band
Radar:	1 Furuno x FAR-2137-D, S Band
GPS:	2 Furuno x GP-170
Echo Sounder:	1 Furuno x FE-800
Navtex:	1 Furuno x NX-700A
Auto-Pilot:	1 Anschutz x NP 60
Gyro Compass:	1 Anschutz x Standard 22
Inmarsat -C:	1 Furuno x Felcom 18
Speed Log:	1 Furuno x DS-60
SART:	2 Ocean Signal x S100
EPIRB:	1 Ocean Signal x E100
AIS:	1 Furuno x FA-170
Port. GMDSS VHF:	3 Icom x IC-GM 1600
Weather Fax:	1 Furuno x FAX-408
Portable VHF:	3 x Motorola GP328
BNWAS:	1 x Furuno BR 500
Chart Plotter:	1 x Garmin GPSMAP7412

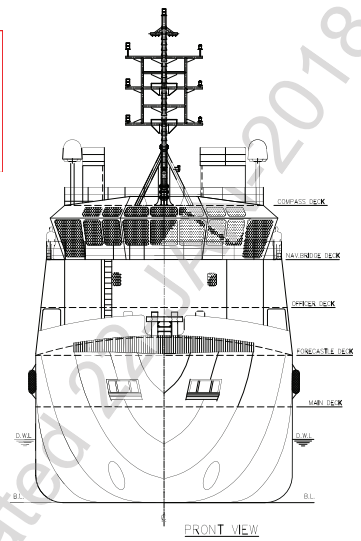
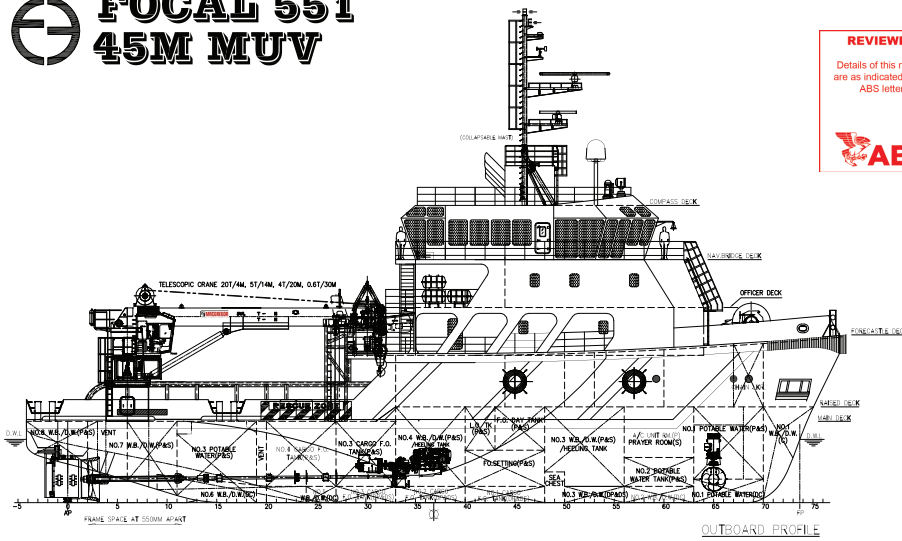
LIFE SAVING & HSE

Search Lights:	2 x 2,000W & 2 x 1,000W
Floodlights:	6 x 500W
Life Rafts:	6 x 20 Men
Lifejackets:	38 Nos.
Lifebuoys:	8 Nos.
Rescue Boats:	1 x Rescue Boat, 6 PAX

FOCAL 551 45M MUV

REVIEWED

Details of this review
are as indicated in the
ABS letter

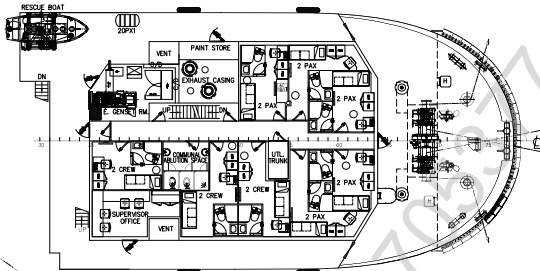


OUTBOARD PROFILE

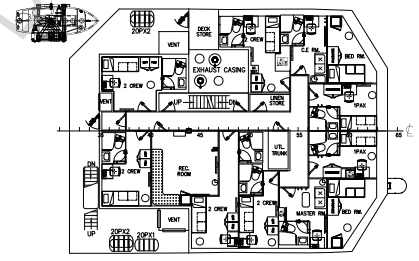
FRONT VIEW

PRINCIPAL PARTICULARS & CAPACITIES

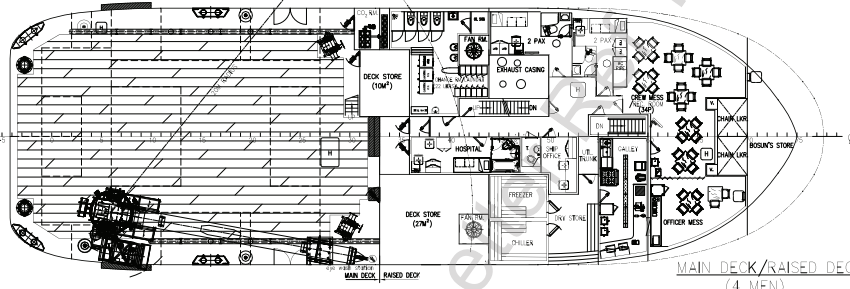
LENGTH OA	45.00M
LENGTH BP	40.52M
BEAM MLD.	14.20M
DEPTH MLD.	4.50M
DRAFT SCANTLING	3.50M
DRAFT DESIGNED	3.20M
COMPLEMENT	34 MEN
MAIN ENGINE	2 x 1,300 BHP
DECK LOADING	5T/M ²
TRIAL SPEED	10.5 KTS
CARGO DECK AREA	200 M ²
FUEL OIL	350 M ³
W.B./D.W.	250 M ³
POTABLE WATER	160 M ³



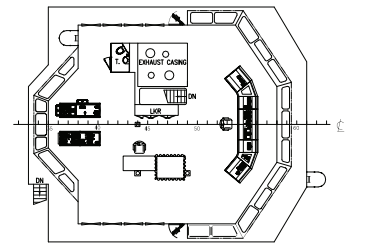
FORECASTLE DECK
(16 MEN)



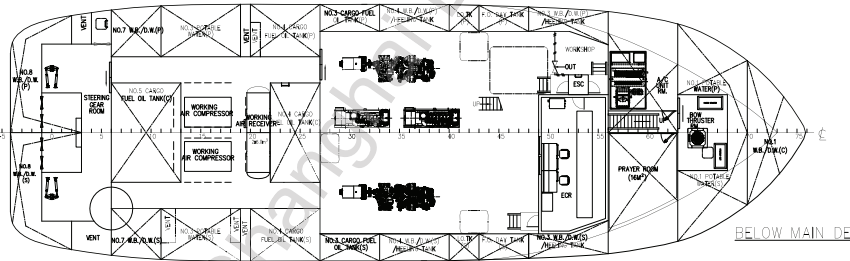
OFFICER DECK
(14 MEN)



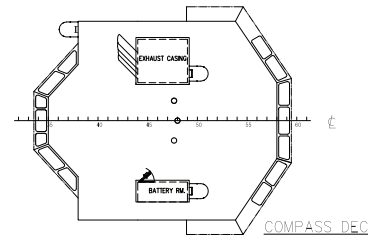
MAIN DECK/RAISED DECK
(4 MEN)



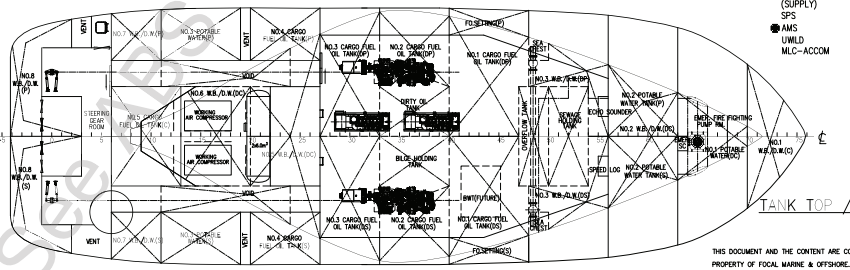
NAV. BRIDGE DECK



BELOW MAIN DECK



COMPASS DECK



TANK TOP / BOTTOM

CLASS: ABS A1 © OFFSHORE SUPPORT VESSEL
(SUPPLY)
SPS
AMS
UWLD
MLC-ACCOM

9	AMENDED AS BUILT ON SITE	ZF	DEC-28-2017
8	AMENDED AS DESIGN PROGRESS	YP	SEP-30-2016
REV NO.	NEWER DESCRIPTION	BY	DATE
OWNER	ATLANTIC MARITIME GROUP FZE		
BUILDER	WUCHANG SHIPBUILDING INDUSTRY CO., LTD		
	HULL NO.: 800012A0M/800013A0M/800014A0M/800015A0M		
PROJECT	45M MAINTENANCE / UTILITY VESSEL "FOCAL 551"		
APPROVE	DWG TITLE:	JOB NO.:	P-1919
VERIFY		DWG NO.:	P-1919-001
CHECKER		SCALE:	1:125 (A1)
DRAWER	YP	CLASS:	ABS
FOCAL MARINE & OFFSHORE EMAIL: info@focmarine.com SHANGHAI TEL: 86-21-58752786 SINGAPORE TEL: 65-65481387 FAX: 86-21-50233265 FAX: 65-65481391			

THIS DOCUMENT AND THE CONTENT ARE COPYRIGHT AND REMAIN PROPERTY OF FOCAL MARINE & OFFSHORE. THEY MUST NOT BE COPIED IN WHOLE OR IN PART TO ANY THIRD PARTY FOR ANY PURPOSE, WITHOUT PRIOR WRITTEN PERMISSION FROM FOCAL MARINE & OFFSHORE. THE RECEIPT OF THIS DOCUMENT IMPLIES ACCEPTANCE OF THIS CONDITION.