



AOS PROVIDER



Atlantic Maritime Group FZE

www.atlanticnavigation.com

GENERAL PARTICULARS

Year of Build / Place	: 2010 / China
IMO Number	: 9543237
Call Sign	: HO6399
Flag / Port of Registry	: Panama / Panama
Class	: BV
Notation	: \boxtimes Hull \boxtimes Mach, Tug, Supply Vessel Fire Fighting Ship 1 - Water Spraying, Unrestricted Navigation, \boxtimes DYNAPOS – AM / AT
GRT / NRT	: 1537 / 461
Vessel Manager	: Atlantic Maritime Group

DIMENSIONS

Length OA	: 58.70 m
Length BP	: 53.20 m
Breadth	: 14.60 m
Depth	: 5.50 m
Draft (Maximum)	: 4.76 m
Displacement @ Max. Draft	: 2804.69 T
Deadweight	: 1406.95 T
Lightship	: 1397.74 T

MACHINERY

Main Engine	: 2 x Caterpillar 3516 B @ 1600 RPM Total: 5150 BHP; 3840 kW
Gear Box	: Reintjes
Main Generator	: 3 x Caterpillar C18, 492 kW, 415 V, 50 Hz
Emergency Generators	: 1 x Caterpillar, C4.4 DITA, 74.5 KW, 415 V, 50 Hz
Propellers	: 2 x ZF; CPP, 213 RPM
Bow Thrusters	: 1 x Kawasaki, 515 kW, 8 T Thrust, CPP

FIRE FIGHTING & SAFETY EQUIPMENT

Fi-Fi Pumps	: 2 x 1500 m ³ / hr @ 128 m Head
Fi-Fi Monitors	: 2 x 1200 m ³ / hr with Remote Control
Fixed CO ₂ System	: In Engine Room
Rescue Boat & Davit	: 1 x 6 Pax (Open Type) & 14 KN Single Arm Davit
Life Rafts	: 6 x 25 Pax (Inflatable), 2 x 15 Pax (Inflatable)
Life Buoys	: 8 Nos
Fire Hydrants	: 20 Nos (12 x 50 NB & 8 x 40 NB)
Life Jackets	: 83 Nos

DECK MACHINERY & EQUIPMENT

Windlass	: 1 x Mentrade; Hydraulic; 10 Tons @ 9 m / min Double Gypsies with Double Warring Ends
Capstans	: 2 x Mentrade; Hydraulic; 5 T @ 15 m / min
Anchors	: 2 x 1367 KG AC-14, HHP Anchor
Chains	: 12 Shots each side 660 m x 40 mm
Anchor Handling / Towing Winch	: 1 x Mentrade; Hydraulic Driven; Double Drum Waterfall Line Pull @ 150 T & Brake Holding @ 200 T
Tugger Winch	: 2 x Mentrade; Hydraulic Driven; 10 T each @ 15 m / min
Shark Jaw	: Hydraulic Operated Karm Fork; SWL – 200 T
Towing Pin	: 2 x Karmoy; Max. Line Load – 200 T
Stern Roller	: 1 x 200 MT; 5 m (Length) x 1.5 m (Diameter)

DP SYSTEM

Make	: Kongsberg DP 1 (c-Pos)
	: 1 x cJoy
	: 2 x DGPS

CAPACITIES & PERFORMANCE

Potable Fresh Water	: 234.21 m ³
Fuel Oil	: 482.48 m ³
Drill Water/ Cargo Fresh Water	: 465.08 m ³
Mud Tank	: 259.24 m ³
Bulk Storage Tank	: 186.00 m ³
Foam and Dispersant Tank	: 13.00 m ³ (Each)
Bilge & Fire / GS Pump	: 3 x 75 m ³ / hr @ 40 m Head
Fresh Water Pump	: 1 x 100 m ³ / hr @ 75 m Head
Drill Water / Cargo FW Pump	: 1 x 100 m ³ / hr @ 75 m Head
Cargo Fuel Oil	: 1 x 150 m ³ / hr @ 75 m Head
Mud Pump	: 2 x 70 m ³ / hr @ 75 m Head
Deck Cargo Space	: 370 m ²
Design Deck Load	: 7.0 T / m ²
Deck Cargo Capacity	: 550 T
Speed	: 12.5 knots
Fuel Consumption	: 11 m ³ / day @ CSR 18 m ³ / day @ MCR
Bollard Pull	: 70.30 MT
Compressed Air System	: 5.6 kg / cm ² (80 psi)
Sewage Treatment Plant	: 42 Persons
Oily Water Separator	: USHC -10; Supply Pump 1 x 1.0 m ³ / hr
Fresh Water Maker	: ENWA; Capacity - 5.5 m ³ / day
Chiller & Freezer	: 1 Month for 42 Persons
Dispersant System	: Available
Power Supply Sockets (Deck)	: 4 x 415 V; 2 x 220 V @ 32 Amps

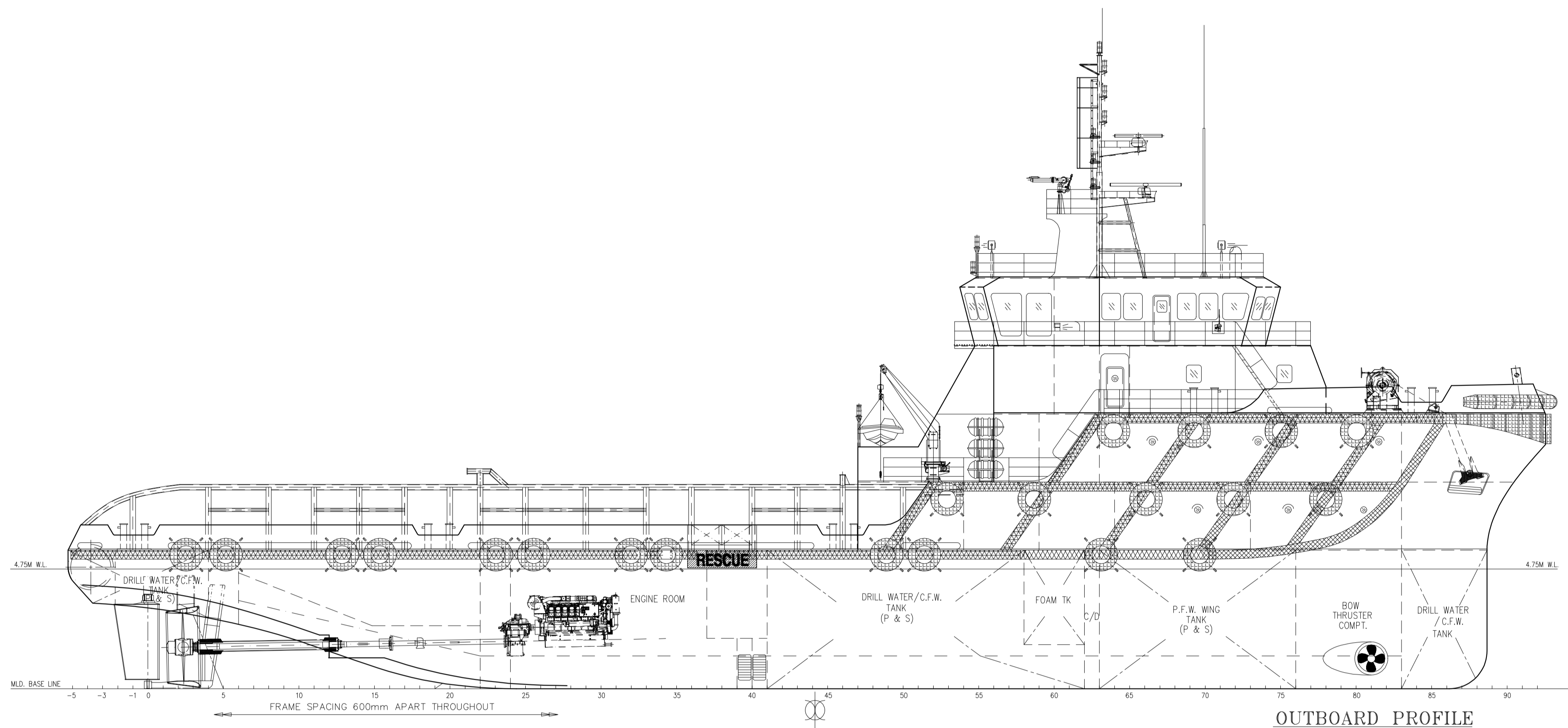
NAVIGATION & COMMUNICATION EQUIPMENT

Fixed VHF	: 2 x Furuno – FM - 8800D
Portable VHF (GMDSS)	: 3 x McMurdo – R2
MF/ HF/ DSC	: 1 x Furuno – FS – 2571C
Navtex	: 1 x Furuno – NX – 700B
Auto Pilot	: 1 x Anschutz Nauto Pilot NP 80
Magnetic Compass	: 1 x Saura Keiki MR-150
Gyro Compass	: 2 x Simrad GC 80
AIS	: 1 x Furuno – FA - 150
GPS	: 1 x Furuno / GPS Navigator / GP-150
EGC	: 1 x Furuno - Felcom 15
SSAS	: 1 x Furuno - Felcom 15
GMDSS	: Area A1 + A2 + A3
Inmarsat C	: 2 x Furuno Felcom 15
Radar	: 2 x Furuno (X and S Band) – MU 201 CR / 1942MKII
EPIRB	: 1 x McMurdo E5
SART	: 2 x ACR Pathfinder Pro
Intercom/ P.A System	: Jotron Phontech 1501
Satcom	: Mini V - Sat Broadband

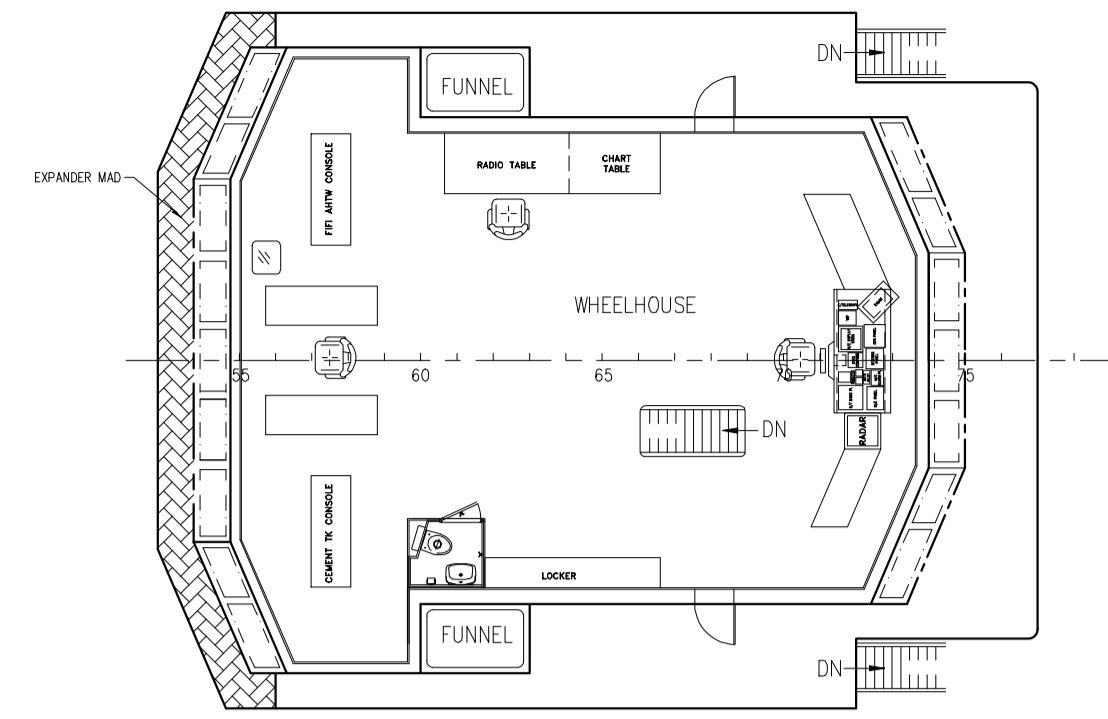
ACCOMMODATION

1 Man Cabin	: 2 Nos
2 Man Cabin	: 4 Nos
4 Man Cabin	: 8 Nos
Total	: 42 Person
Hospital	: 1 No
Recreation Room	: 1 No
Mess Room	: 1 No
Office	: 1 No

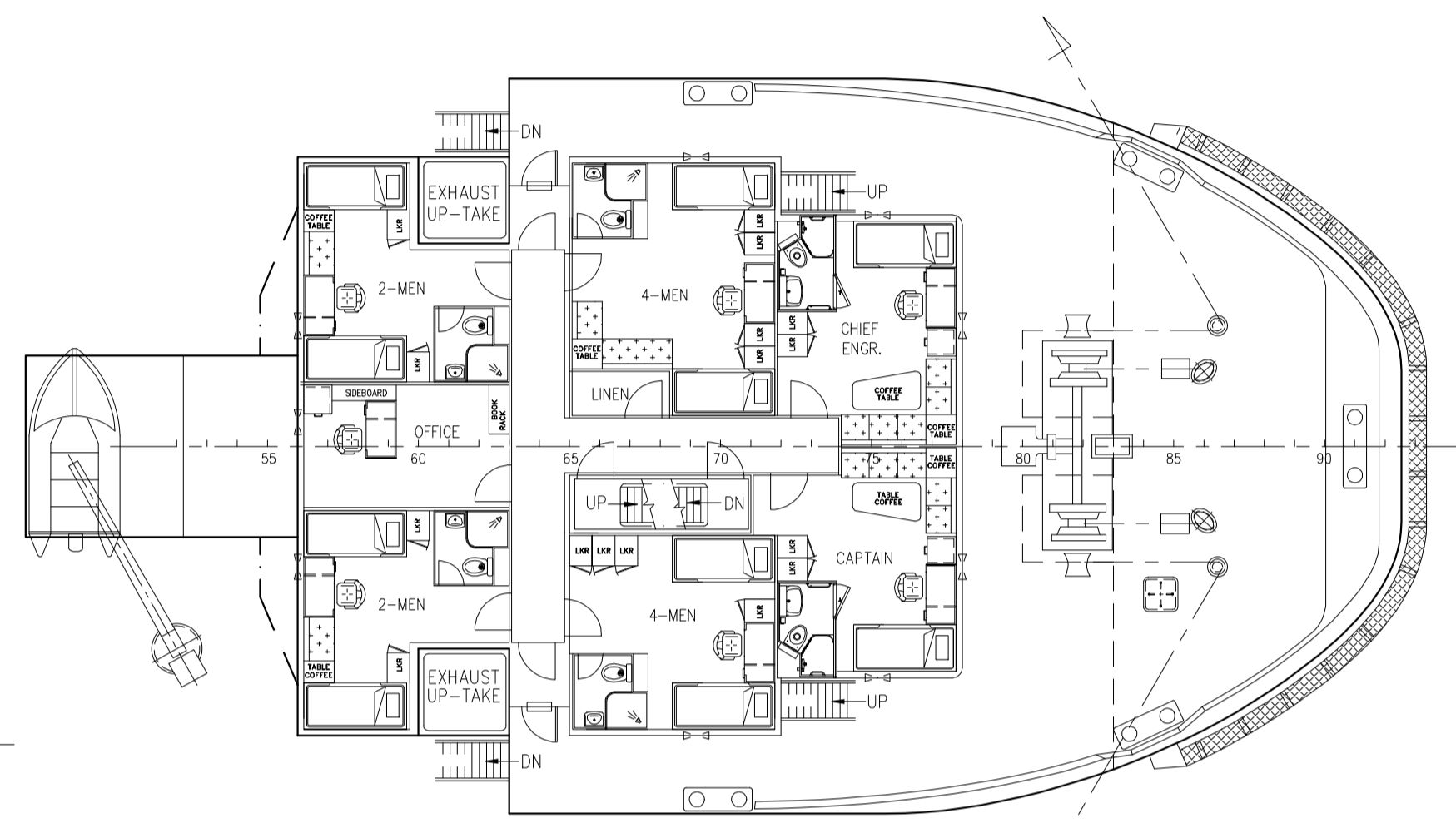
All Cabins are Fully Air Conditioned



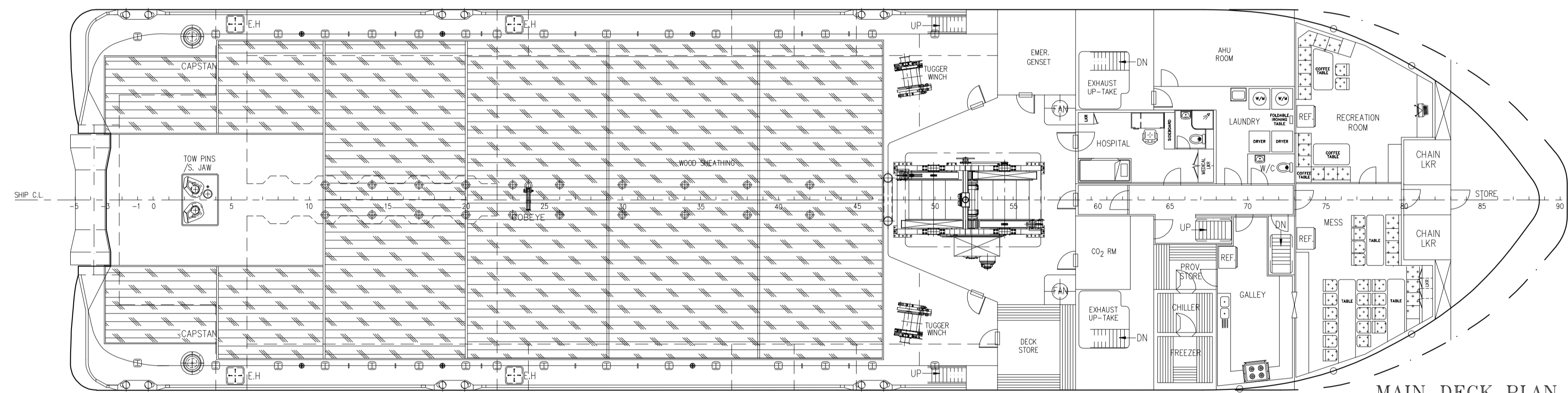
OUTBOARD PROFILE



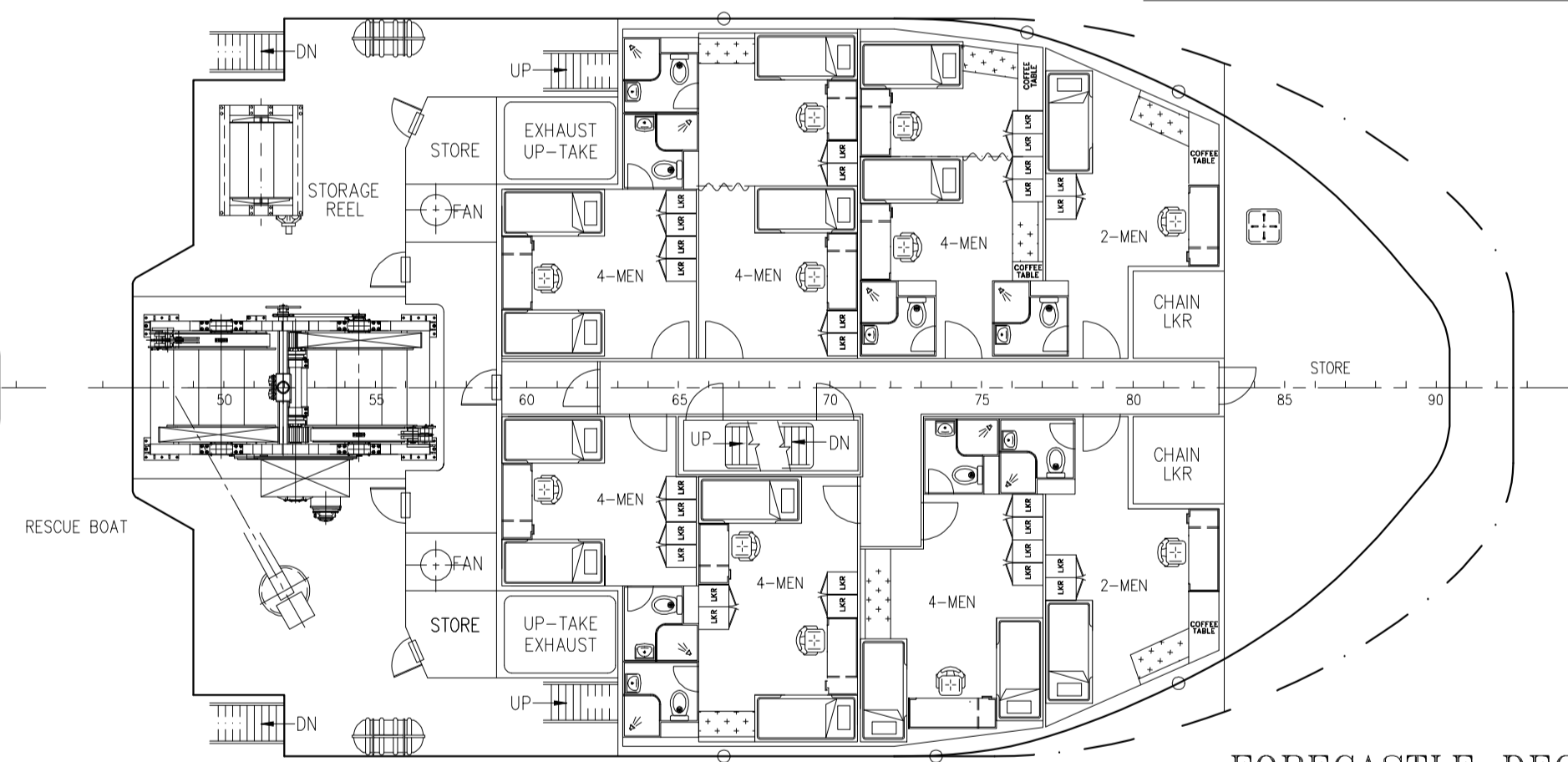
NAV. BRIDGE DECK



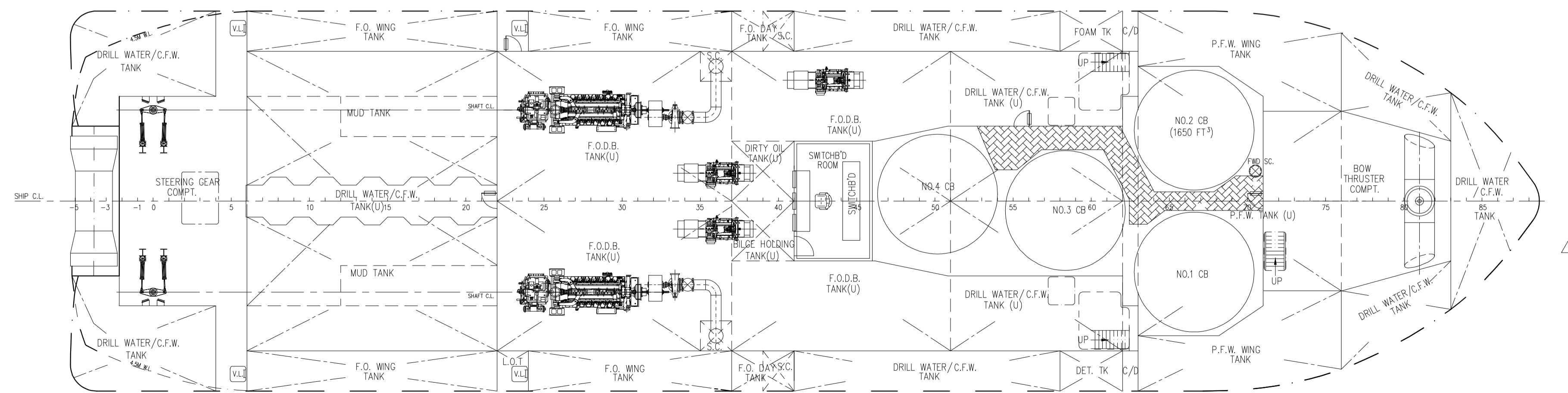
UPPER FORECASTLE DECK



MAIN DECK PLAN



FORECASTLE DECK



BELOW MAIN DECK PLAN

PRINCIPAL DIMENSIONS	
LENGTH OVERALL	58.70 M
LENGTH WATERLINE	56.37 M
LENGTH BETWEEN PERPENDICULARS	53.20 M
BREADTH MOULDED	14.60 M
DEPTH MOULDED	5.50 M
MAX. DRAFT MOULDED	4.75 M
ACCOMMODATION	42 MEN
FUEL OIL	476 M ³
POTABLE FRESH WATER	234 M ³
DRILL WATER/CARGO FRESH WATER	465 M ³
MUD (S.G. - 2.5)	255 M ³
DRY BULK TANKS(4 x 1650 FT ³ = 6600 FT ³)	187 M ³
CLEAR DECK AREA (DECK LOADING = 7 T/M ²)	375 M ²
TOTAL POWER	2 x 2575 BHP
BOLLARD PULL	60 TONNS
SPEED	13.5 KNOTS

Bureau Veritas Marine & Offshore
Section 14747G.....
VU
 Dubai, 24-Mar-2020
 [Electronic document]
 The plan approval office

REV	DATE	MARK	ZONE	DESCRIPTION	MOD BY	CHKD BY
2	16.03.2020	--	--	UPDATED AS PER CLASS COMMENT	ABR	RS
1	13.02.2020	--	--	FRESH WATER TANK CAPACITIES ARE UPDATED AS PER APPROVED STABILITY BOOKLET	MBK	RS
0	11.02.2020	--	--	ISSUED FOR REVIEW	MBK	RS

REVISIONS	
CLIENT	ATLANTIC MARITIME GROUP PZE
SHIP	AOS PROVIDER
TITLE	GENERAL ARRANGEMENT PLAN

SCALE	DRAWN	CHECKED	MBK	RS	HULL NUMBER	DRAWING NUMBER	REV
1:125	MBK	RS	--	--	--	V910-G-01	2

SIZE: A1 VERIFIED: SGA DATE: 16/03/2020 SHEET: 1 OF 1
 THIS DRAWING IS THE PROPERTY OF VEDAM DESIGN & TECHNICAL CONSULTANCY AND CANNOT BE MADE PUBLIC, COPIED OR OTHERWISE USED WITHOUT VEDAM DESIGN & TECHNICAL CONSULTANCY WRITTEN PERMISSION.