**GENERAL PARTICULARS**

Year of Build / Place	: April 2024 / China
IMO Number	: 9734903
Call Sign	: TBA
Flag / Port of Registry	: TBA
Class	: ABS
Notation	: ☒ A1, Offshore Support Vessel, E, ☒ AMS, ☒ ACCU, ☒ DPS-2 FFV1, OSR-C1, SPS Code
GRT / NRT	: 3895 / TBA
Vessel Manager	: Atlantic Maritime Group

DIMENSIONS

Length OA	: 79.96 m
Length BP	: 72.96 m
Beam Moulded	: 21.00 m
Depth	: 8.00 m
Draft (Maximum)	: 6.20 m
Deadweight @ Max. Draft	: 3500.00 T

MACHINERY

Main Engine	: 2 x CAT3516C @ 1800 RPM Total: 6006 BHP; 4480 kW
Gear Box	: KUMERA (Fi – Fi / Shaft)
Main Generators	: 3 x Caterpillar C18, 550 kW, 440 V, 60Hz @ 1800 RPM
Shaft Generators	: 2 x 2100 kW, 440 V, 60 Hz
Emergency Generator	: 1 x Caterpillar C9, 238 kW, 440 V, 60 Hz @ 1800 RPM
Propellers	: 2 x CPP
Bow Thrusters	: 2 x 12T, Tunnel thruster, 950 kW

FIRE FIGHTING & SAFETY EQUIPMENT

Fi-Fi Pumps	: 2 x 1820 m ³ / hr @ 125 m Head
Fi-Fi Monitors	: 2 x 1200 m ³ / hr with Remote Control
Fast Rescue Boat	: 1 x 9 Pax, inboard diesel engine
Life Rafts	: 2 x 25 Persons, 2 x 15 Persons (Inflatable – Quick release)
Life Buoys	: 9 Nos
Life Jackets	: 62 Nos

DECK MACHINERY & EQUIPMENT

Deck Crane	: 1 x 3.5-4T@19m electro-hydraulic knuckle arm marine crane
Windlass	: 1 x Hydraulic; 15 T @ 14 m / min
Capstans	: 2 x Hydraulic; 8T @ 15 m / min
Anchors	: 2 x 2850 KG, HHP Anchor
Chains	: 12 Shots each side 330 m x 50 mm
Tugger Winch	: 2 x Hydraulic; 10 T @ 15m / min

DP SYSTEM

Make	: Kongsberg K-Pos-21 DP-2
	: 2 x DGPS, 1 x Radius, 1 x Cyscan.
	: 3 x Gyro Compasses
	: 3 x Wind Sensors
	: 3 x Motion Reference Units MRUs
	: 1 x c-Joy Independent Joystick System

CAPACITIES & PERFORMANCE

Fresh Water Tank	: 550 m ³
Fuel Oil Tank	: 1330 m ³
Drill Water / Ballast Tank	: 1600 m ³
Mud Tank	: 950 m ³
Bulk Storage Tank	: 283 m ³
Recovered Oil Tank	: 630 m ³
Foam and Dispersant Tank	: 18 m ³
Bilge Pump	: 1 x 60 m ³ / hr. @ 60 m Head
Ballast & Fire / GS Pump	: 2 x 100 m ³ / hr @ 60 m Head
Fresh Water Pump	: 1 x 150 m ³ / hr @ 85 m Head
Drill Water/ Cargo FW Pump	: 1 x 150 m ³ / hr @ 80 m Head
Cargo Fuel Oil Pump	: 1 x 150 m ³ / hr @ 80 m Head
Mud Pump	: 3 x 100 m ³ / hr
Deck Cargo Space	: 835 m ²
Design Deck Load	: 5.0 T / m ²
Deck Cargo Capacity	: 1500 T
Speed	: 13.0 knots
Fuel Consumption	: 7.5 m ³ / day @ CSR 12 m ³ / day @ MCR
Starting / Service Air Compressor	: 2 x 30 m ³ / hr @ 30 bar
Oily Water Separator	: 2 Nos
Fresh Water Maker	: 1 x reverse osmosis FW maker, 10T/day
Dispersant System	: Available
Power Supply Sockets (Deck)	: • 4 x 50 Amp, 440/3/60; 4 x 50 Amp, 220/1/60; 4 x 30 Amp, 220/3/60

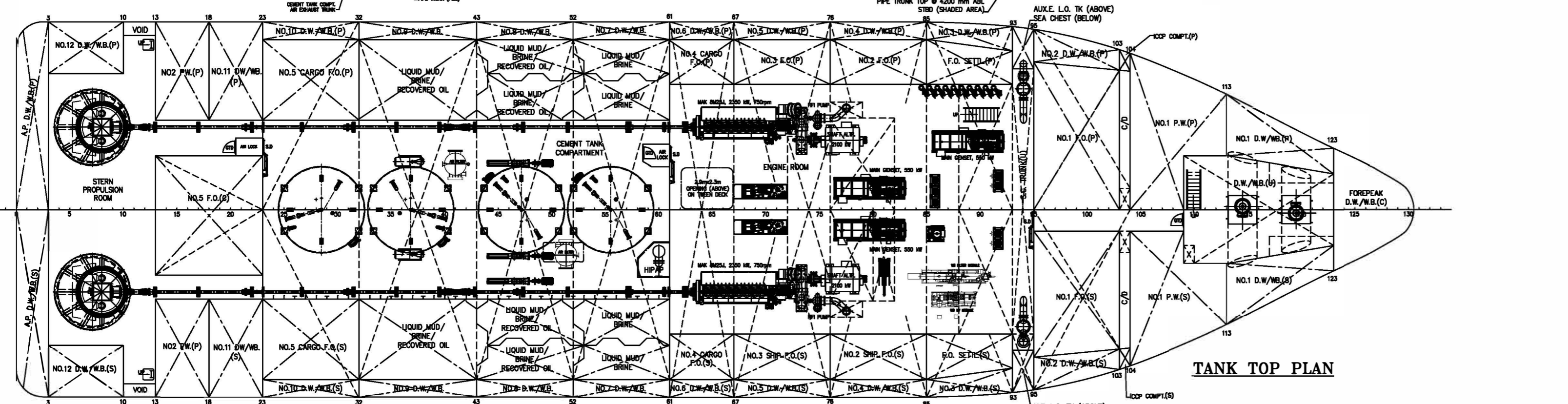
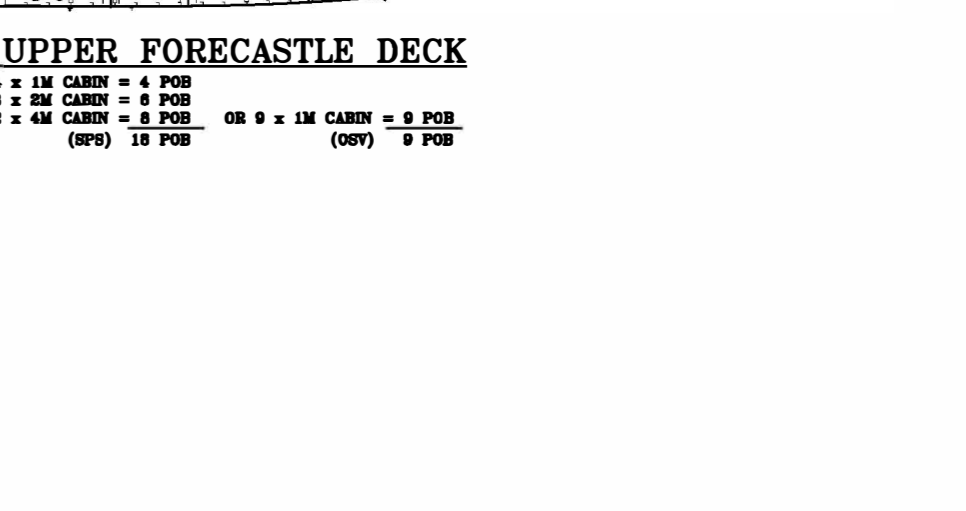
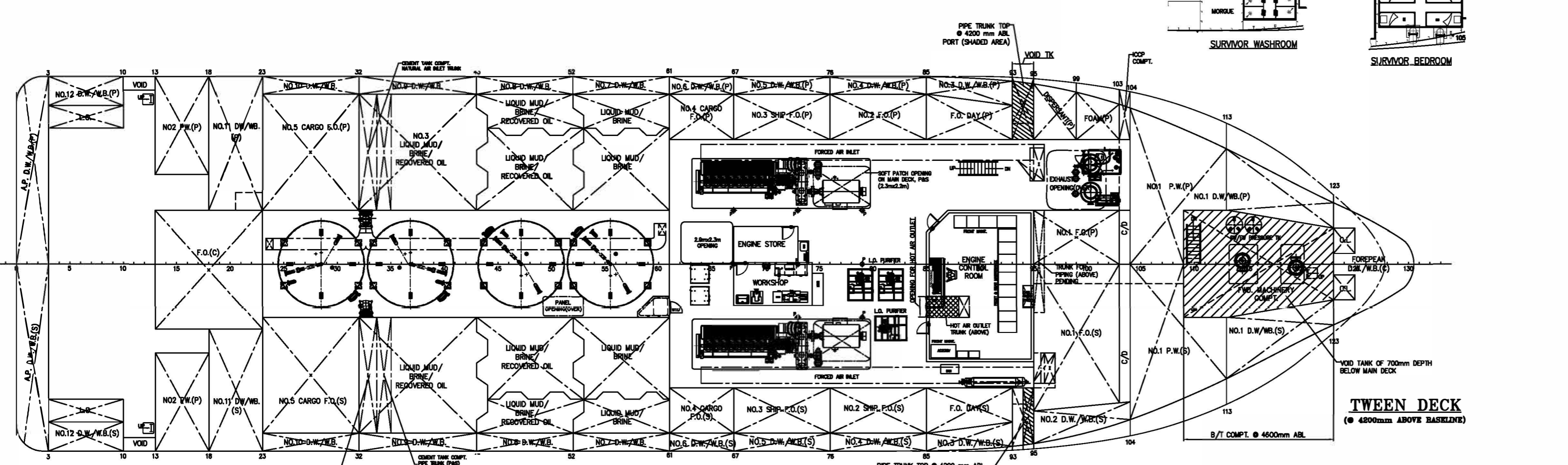
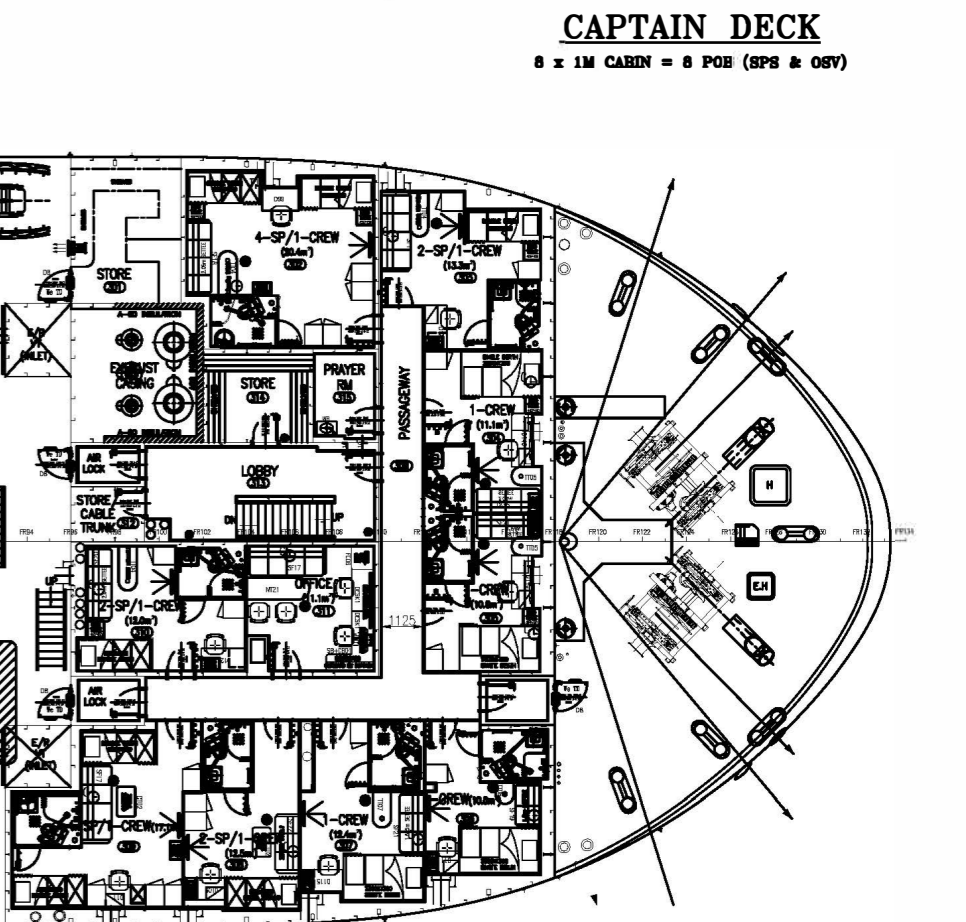
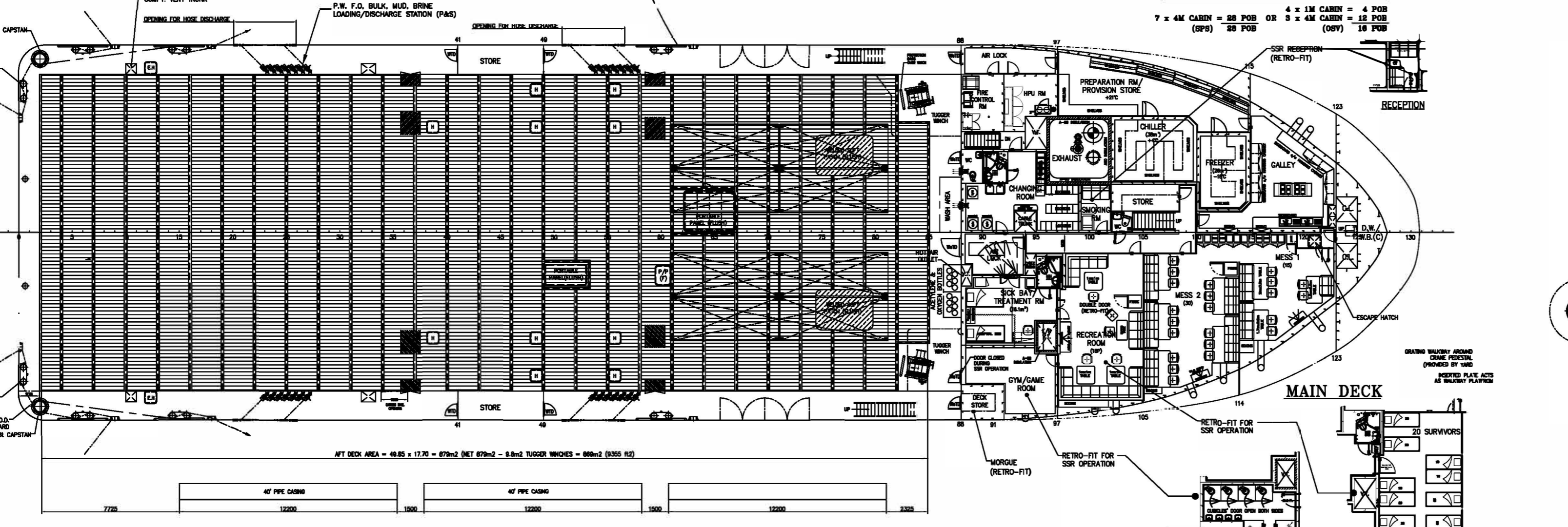
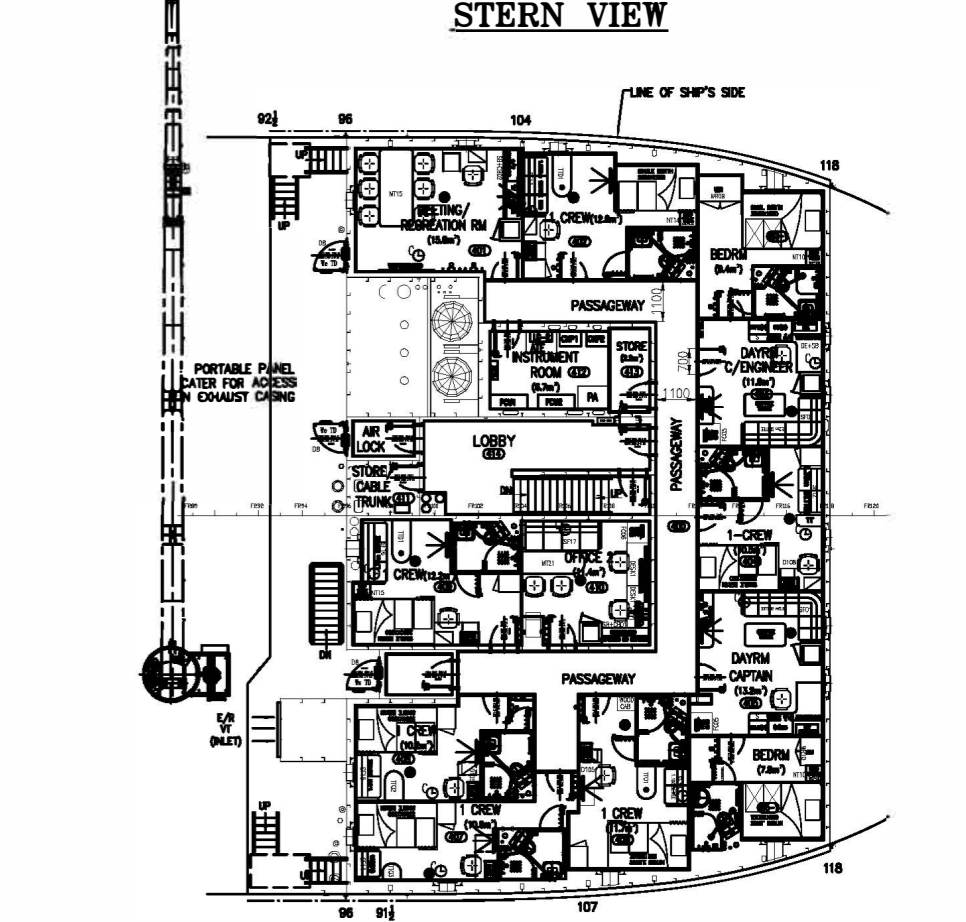
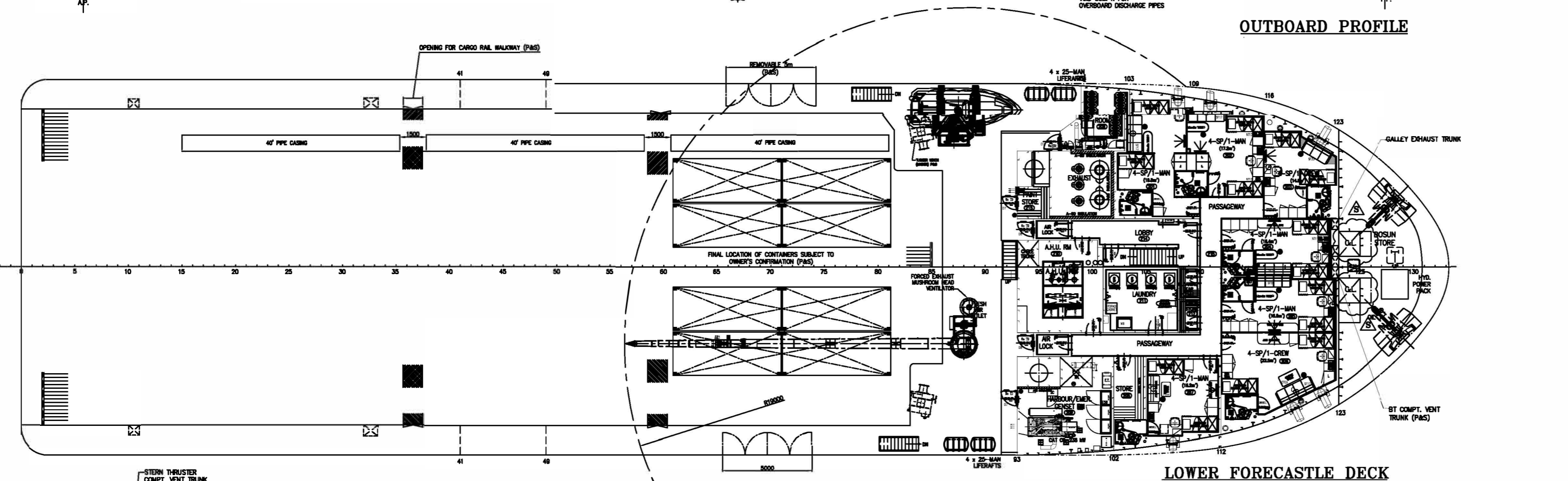
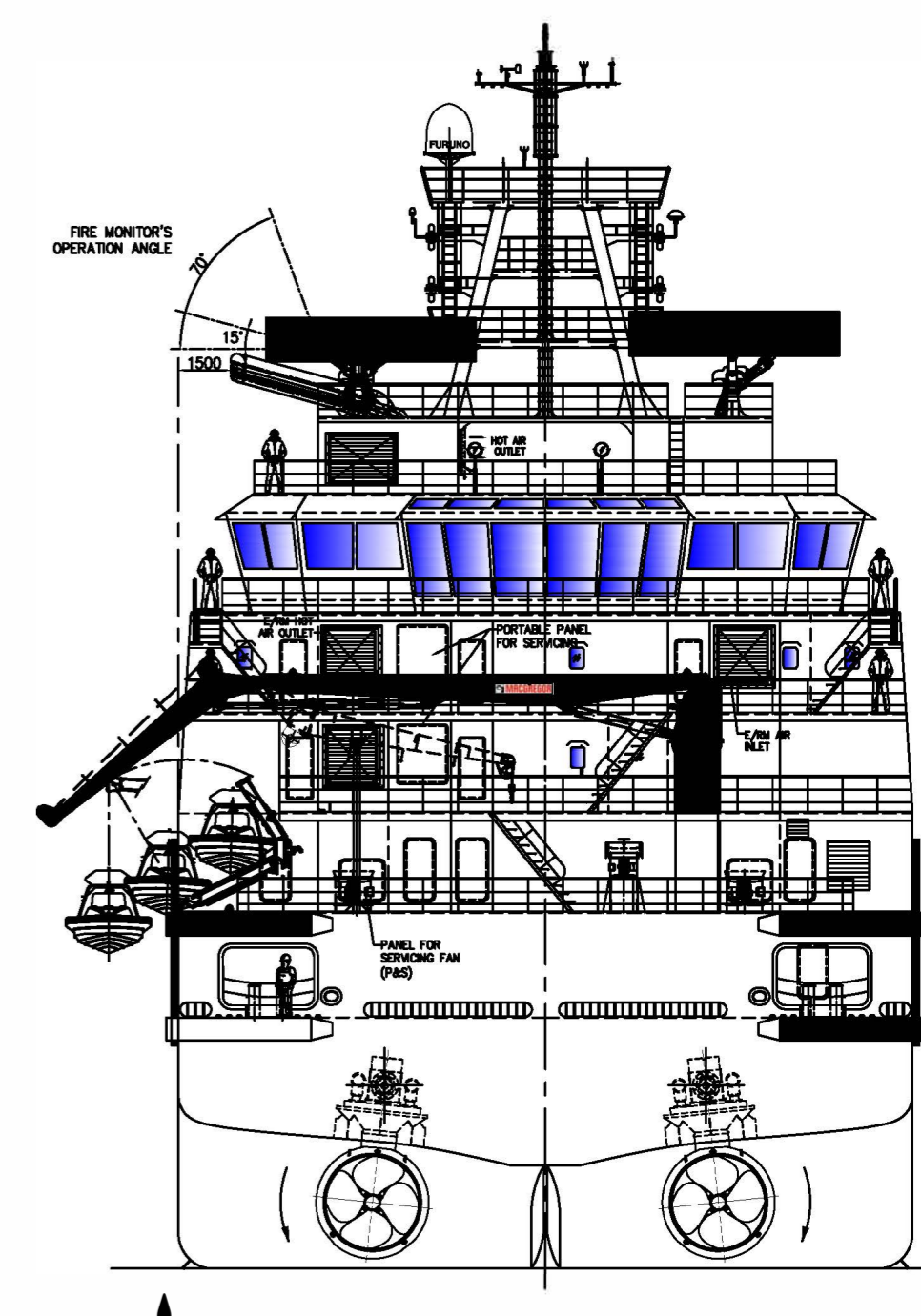
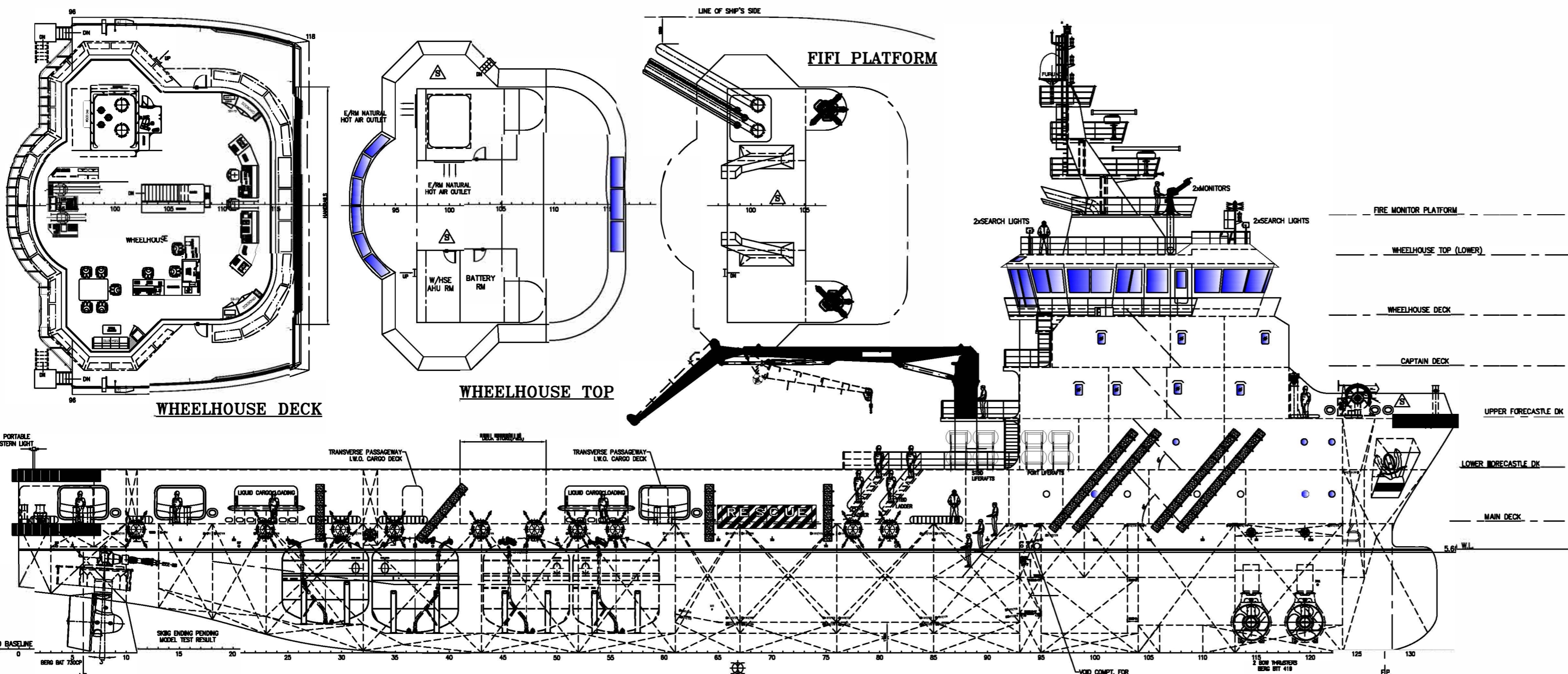
NAVIGATION & COMMUNICATION EQUIPMENT

Fixed VHF	: 2 x Furuno
Portable VHF (GMDSS)	: 4 Nos
MF/ HF/ DSC	: Furuno FS-2575C
Navtex	: 1 No
Auto Pilot	: 1 No
Magnetic Compass	: 1 No
Gyro Compass	: 3 Nos
AIS	: 1 No
GPS	: Yes
EGC	: Yes
SSAS	: 1 Nos
GMDSS	: Area A1+A2+A3
Radar	: 2 Nos
EPIRB	: 1 No
Echo Sounder	: 1 No
Doppler Speed Log	: 1 No
SART	: 2 Nos
Intercom/ P.A System	: 1 Nos
V-SAT	: V-Sat Broadband (High Speed)

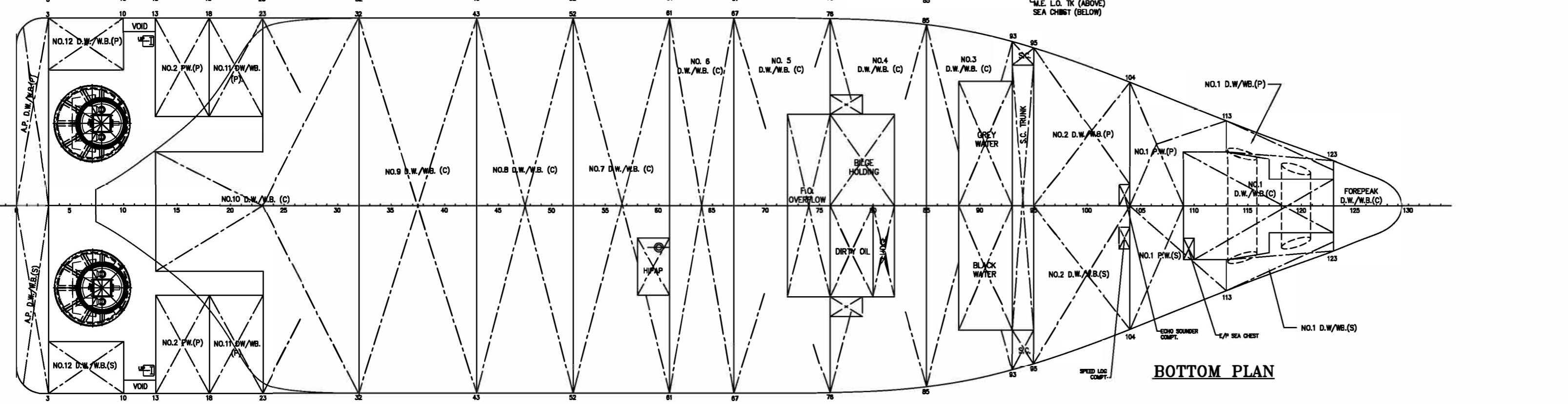
ACCOMMODATION

1 Man Cabin	: 6 Nos
2 Man Cabin	: 13 Nos
4 Man Cabin	: 5 Nos
Total	: 52 Person
Hospital	: 1 No
Recreation Room	: 1 No
Mess Room	: 1 No
Office	: 3 No

All Cabins are Fully Air Conditioned



PARTICULARS	
GENERAL:	
LENGTH OVERALL	79.96m (262.35')
LENGTH B.P.	72.96m (239.38')
BEAM MOULDED	21.00m (68.90')
DEPTH MOULDED	7.20m (23.62')
DRAFT	5.60m (18.37')
DEADWEIGHT, approx.	3,500t
ACCOMMODATION, SPS MODE	54 MEN (12x1, 3x2, 9x4)
	OSV MODE OR 33 POB (21x1, 3x4)
DECK AREA	869m ² (9,355 ft ²)
DECK CARGO, approx.	1,500t



PARTICULARS	
GENERAL:	
LENGTH OVERALL	79.96m (262.35')
LENGTH B.P.	72.96m (239.38')
BEAM MOULDED	21.00m (68.90')
DEPTH MOULDED	7.20m (23.62')
DRAFT	5.60m (18.37')
DEADWEIGHT, approx.	3,500t
ACCOMMODATION, SPS MODE	54 MEN (12x1, 3x2, 9x4)
	OSV MODE OR 33 POB (21x1, 3x4)
DECK AREA	869m ² (9,355 ft ²)
DECK CARGO, approx.	1,500t