



AOS VICTORY



Atlantic Maritime Group FZE

www.atlanticnavigation.com

GENERAL PARTICULARS

Year of Build / Place	: 2014 / China
IMO Number	: 9701762
Call Sign	: 3FWV6
Flag / Port of Registry	: Panama / Panama
Class	: ABS
Notation	: ⚓ A1, Towing Vessel, FFV 1, Offshore Support Vessel AH, (E), ⚓ AMS, ⚓ DPS – 2
GRT / NRT	: 2081 / 624
Vessel Manager	: Atlantic Maritime Group

DIMENSIONS

Length OA	: 60.50 m
Length BP	: 54.30 m
Breadth	: 15.80 m
Depth	: 6.50 m
Draft (Maximum)	: 5.11 m
Displacement @ Max. Draft	: 3215.40 T
Deadweight @ Max. Draft	: 1326.23 T
Lightship	: 1895.75 T

MACHINERY

Main Engine	: 2 x Caterpillar MAK 8M25C 2400 KW @ 750 RPM Total: 6500 BHP; 4800 kW
Gear Box	: Reintjes, LAF 2355 K41A
Main Generators	: 3 x Caterpillar C18 ACERT, 438 kW, 415 V, 50Hz @ 1500 RPM
Shaft Generators	: 2 x Stamford PM734C2, 1000 kW, 415 V, 50 Hz
Emergency Generator	: 1 x PERKINS 95 kW, 415 V, 50 Hz @ 1500 RPM
Propellers	: 2 x Berg BCP760-04 Twin, 4 Bladed; CPP
Bow Thrusters	: 2 x Kawasaki KT – 72B3F, 500 kW, 1450 RPM, 8 T Thrust, FPP
Stern Thrusters	: 1 x Kawasaki KT – 72B3, 515 kW, 1450 RPM, 8 T Thrust, CPP

FIRE FIGHTING & SAFETY EQUIPMENT

Fi-Fi Pumps	: 2 x 1806 m ³ / hr @ 123 m Head
Fi-Fi Monitors	: 2 x 1200 m ³ / hr with Remote Control
Fixed CO ₂ & Water Mist System	: In Engine Room
Rescue Boat & Davit	: 1 x 6 Pax FRC (Open Type) & 21 KN Single Arm
Life Rafts	: 8 x 25 Persons (Inflatable – Throw Type)
Life Buoys	: 8 Nos
Fire Hydrants	: 16 Nos (50 NB) & 8 Nos (65 NB)
Life Jackets	: 90 Nos

DECK MACHINERY & EQUIPMENT

Deck Crane	: 1 x Telescopic Boom Pedestal Crane Maximum Boom Length 9 M SWL 3 T @ 2 m - 9 m Radius
Anchor Handling / Towing Winch	: 1 x MacGregor; Hydraulic; Double Drum Waterfall Wire Rope – 2 x 1000 m x 56 mm Line Pull @ 150 Tons & Brake Holding @ 200 Tons
Windlass	: 1 x MacGregor, Electro Hydraulic; 10 T @ 12 m / min Double Gypsies with Double Warping drums
Capstans	: 2 x MacGregor, Hydraulic; 5 T @ 15 m / min
Anchor	: 2 x 1740 KG D – 14, HHP Anchor
Chains	: 12 Shots each side (P & S) x 42 mm grade U Stud Link Chain
Tugger Winch	: 2 x Hydraulic; 10 T @ 15m / min & Brake Holding – 15 T
Towing Pin	: 2 x Ø-350 Vertical Hydraulic, SWL 200 T
Karm Fork	: 1 Set Ø-350 Hydraulic SWL 200 T
Stern Roller	: 5 m x 2 m, SWL 200 T

DP SYSTEM

Make	: Kongsberg K-Pos-21 DP-2
	: 2 x DGPS, 1 x Radius, 1 x Fanbeam.
	: 1 x c-Joy Independent Joystick System

CAPACITIES & PERFORMANCE

Fresh Water Tank	: 412.40 m ³
Fuel Oil Tank	: 596.80 m ³
Drill Water / Cargo Fresh Water Tank	: 514.00 m ³
Permanent Fresh Water Ballast Tank	: 80.00 m ³
Mud Tank	: 271.20 m ³
Bulk Storage Tank	: 170 m ³ (4 Tanks)
Foam and Dispersant Tank	: 17.90 m ³ (Each)
Fire / GS Pump	: 1 x 110m ³ / hr @ 50 m Head
Bilge / Ballast Pump	: 1 x 75 m ³ / hr @ 50 m Head
Bilge Pump	: 1 x 45 m ³ / hr @ 50 m Head
Fresh Water Pump	: 1 x 100 m ³ / hr @ 75 m Head
Drill Water / Cargo Fresh Water Pump	: 1 x 100 m ³ / hr @ 75 m Head
Cargo Fuel Oil Pump	: 1 x 150 m ³ / hr @ 75 m Head
Mud Pump	: 2 x 70 m ³ / hr @ 75 m Head
Deck Cargo Space	: 360 m ²
Design Deck Load	: 7 T / m ²
Deck Cargo Capacity	: 500 T
Speed	: 12.5 knots
Bollard Pull	: 83.00 T
Fuel Consumption	: 19.0 m ³ / day @ MCR 13.0 m ³ / day @ CSR
Bulk Air Compressor	: 2 x Airman SWS75C; 13 m ³ / min @ 6 Bar
Starting / Service Air Compressor	: 2 x 32.5 m ³ / hr @ 30 bar
Sewage Treatment Plant	: 1 x SBHC - 65 Persons
Oily Water Separator	: USCH – 10; Capacity - 1 x 1.0 m ³ / hr
Fresh Water Maker	: 1 x Cathelco; Capacity – 4 m ³ / day
Chiller & Freezer	: 1 Month for 65 Persons
Dispersant System	: Available
Power Supply Sockets (Deck)	: 4 x 415 V; 2 x 220 V

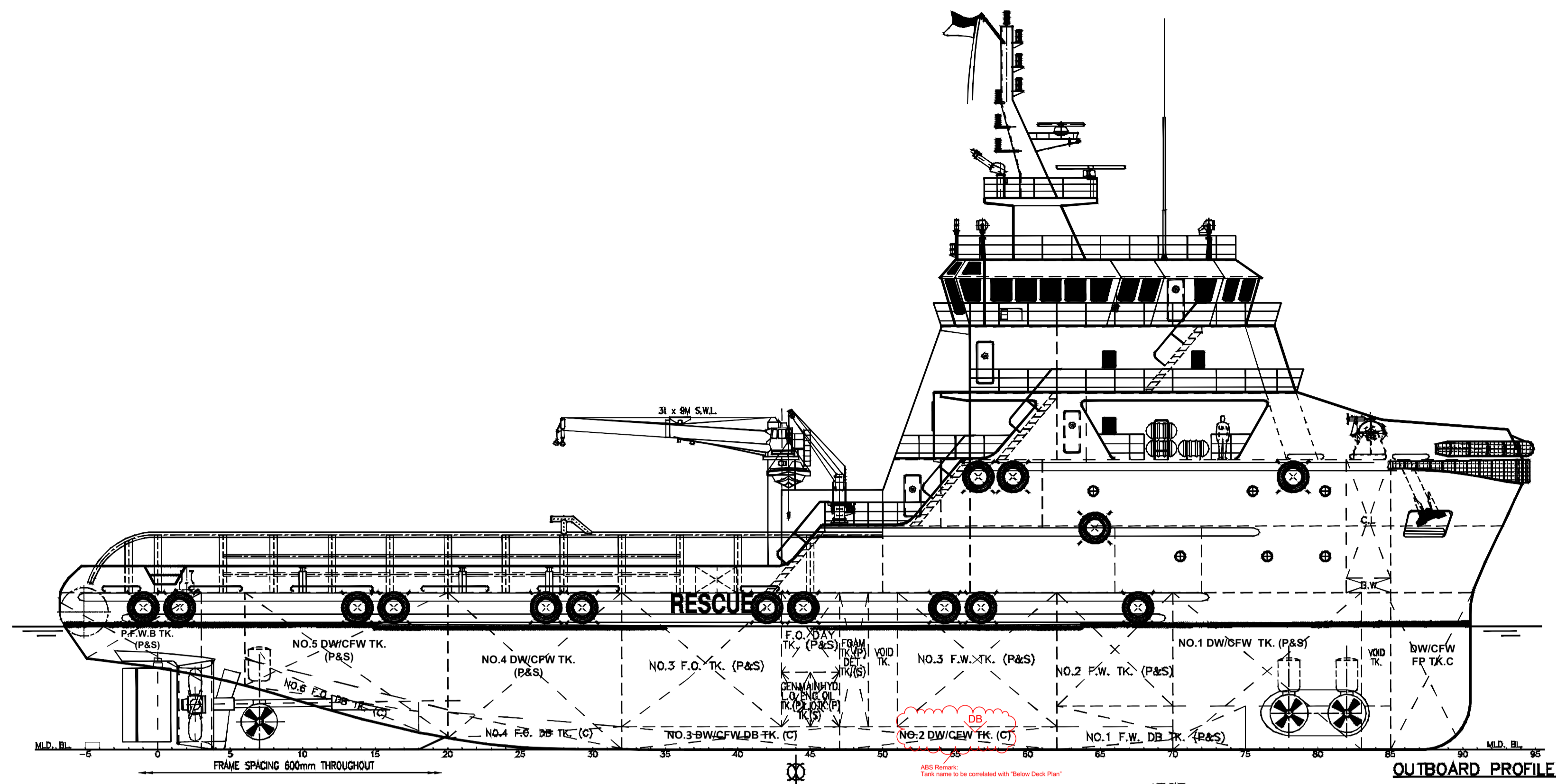
NAVIGATION & COMMUNICATION EQUIPMENT

Fixed VHF	: 2 x Furuno FM 8900S, 1 x Sailor 6248
Portable VHF (GMDSS)	: 3 x McMurdo R5
MF/ HF/ DSC	: 1 x Furuno FS 2575
Navtex	: 1 x Furuno – NX 700
Auto Pilot	: 1 x Navitron NT 888
Magnetic Compass	: 1 x Saura
Gyro Compass	: 3 x Simrad GC80
AIS	: 1 x Furuno – FA 150
GPS	: 1 x GP150, 1 x GP 32
EGC	: 1 x Felcom 18
SSAS	: 1 x Felcom 18
GMDSS	: Area A1+A2+A3
Inmarsat C	: 1 x Felcom 18
Radar	: 2 x Furuno FAR 7115
EPIRB	: 1 x McMurdo
SART	: 2 x McMurdo S4
Intercom/ P.A System	: Hanchin HX-72
V-SAT	: V-Sat Broadband (High Speed)

ACCOMMODATION

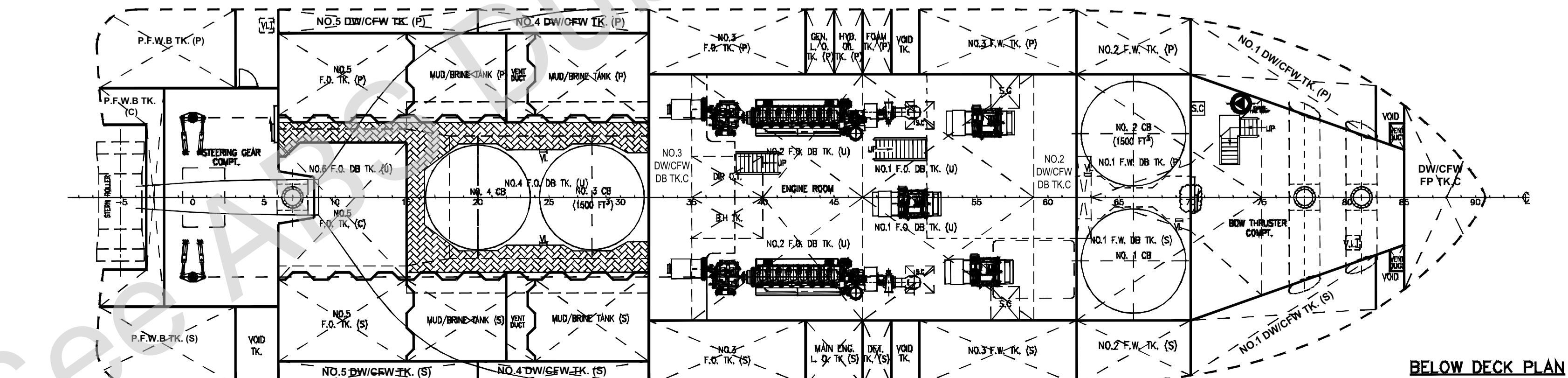
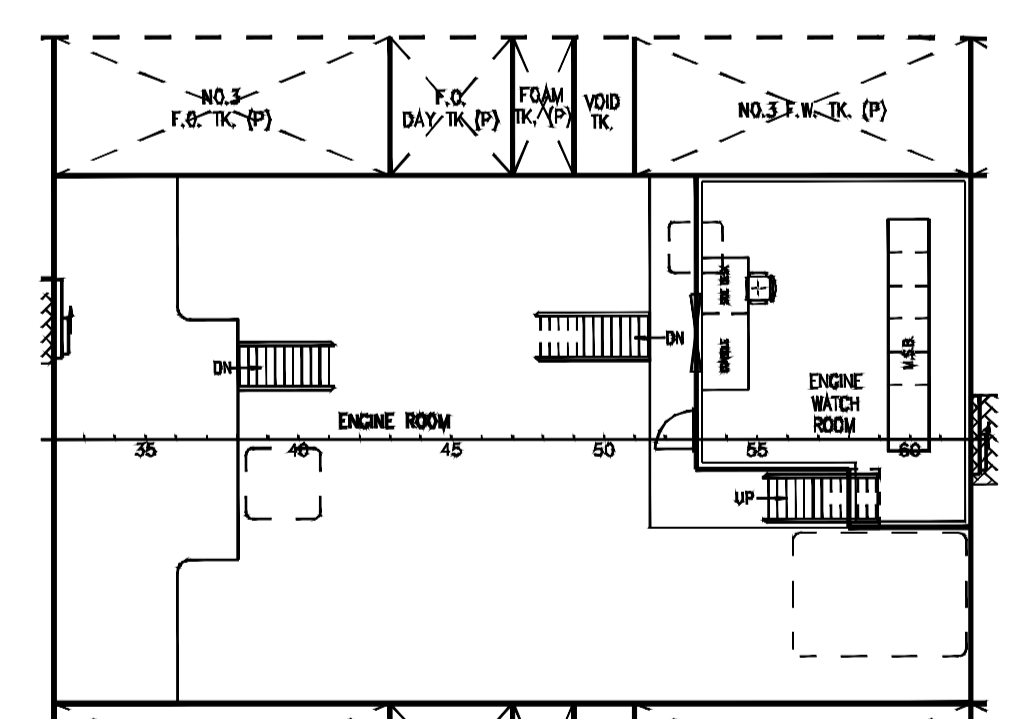
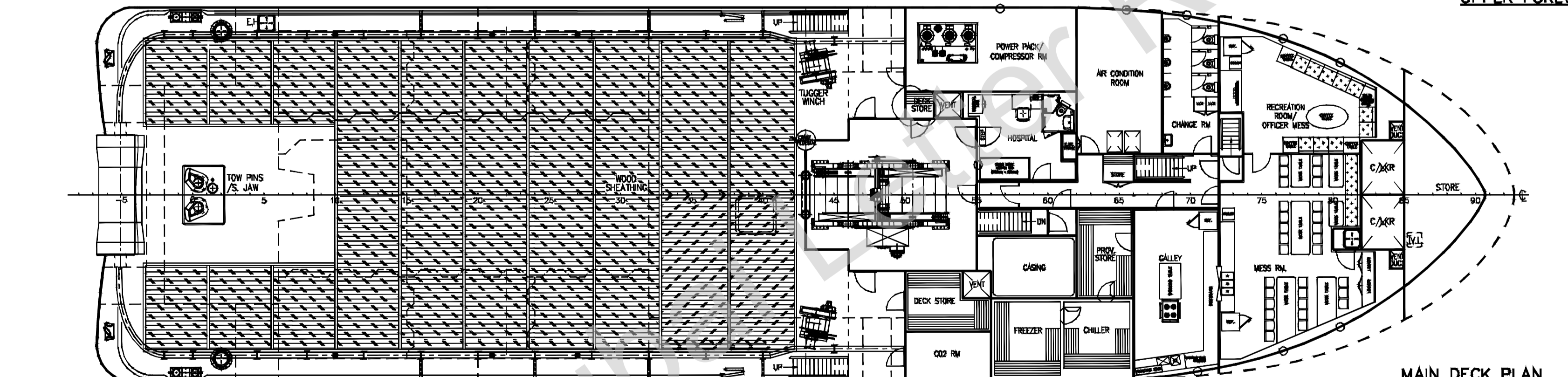
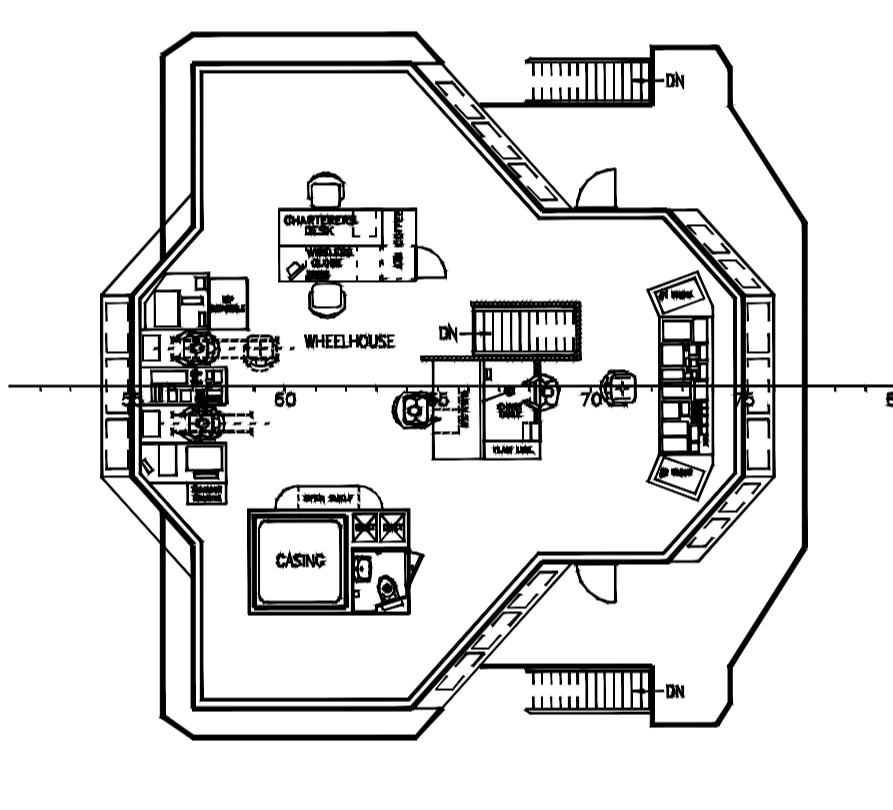
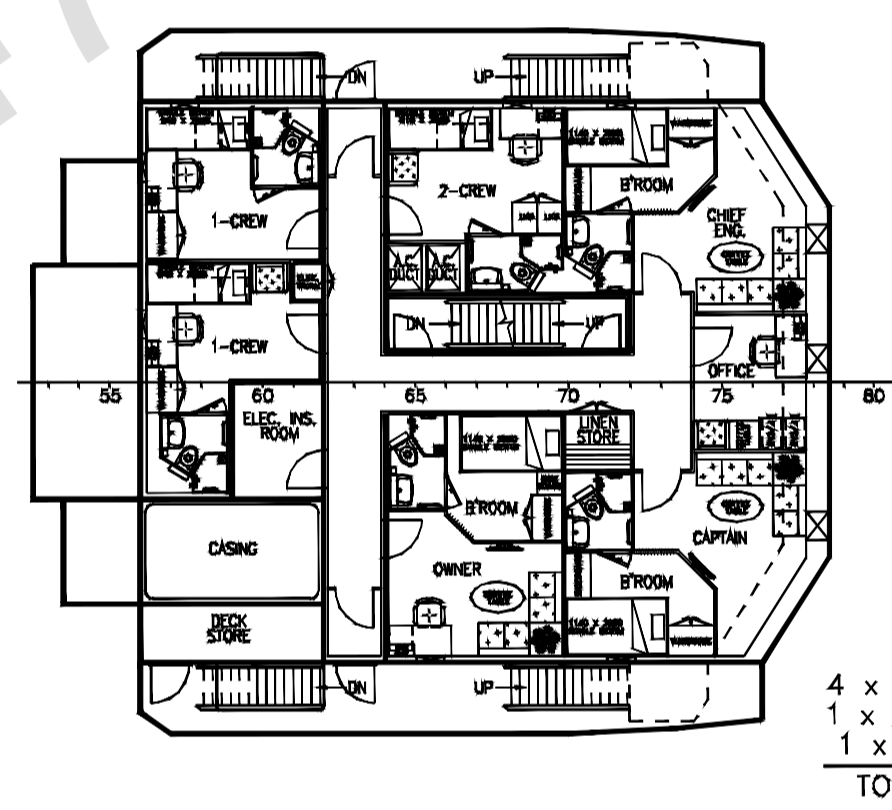
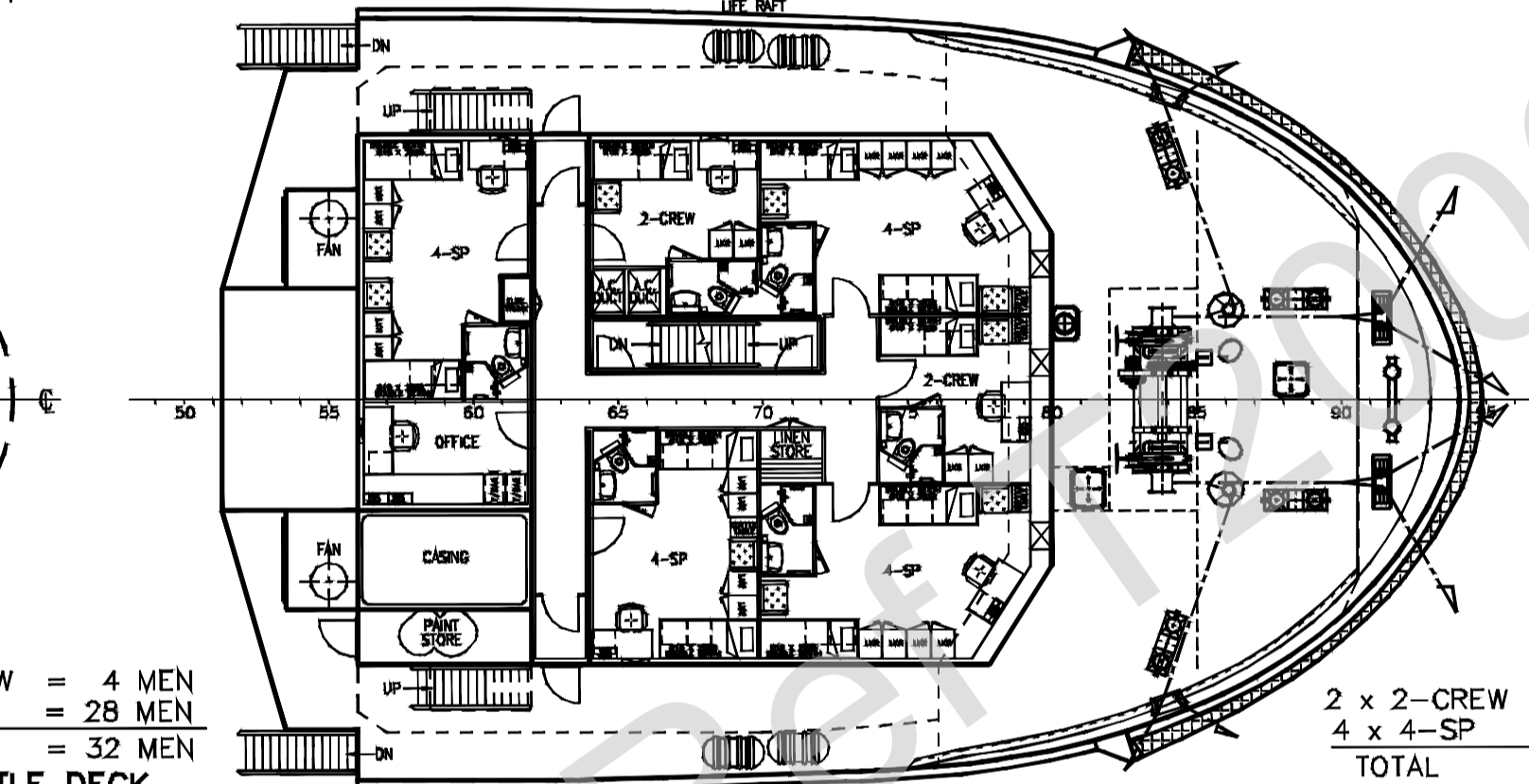
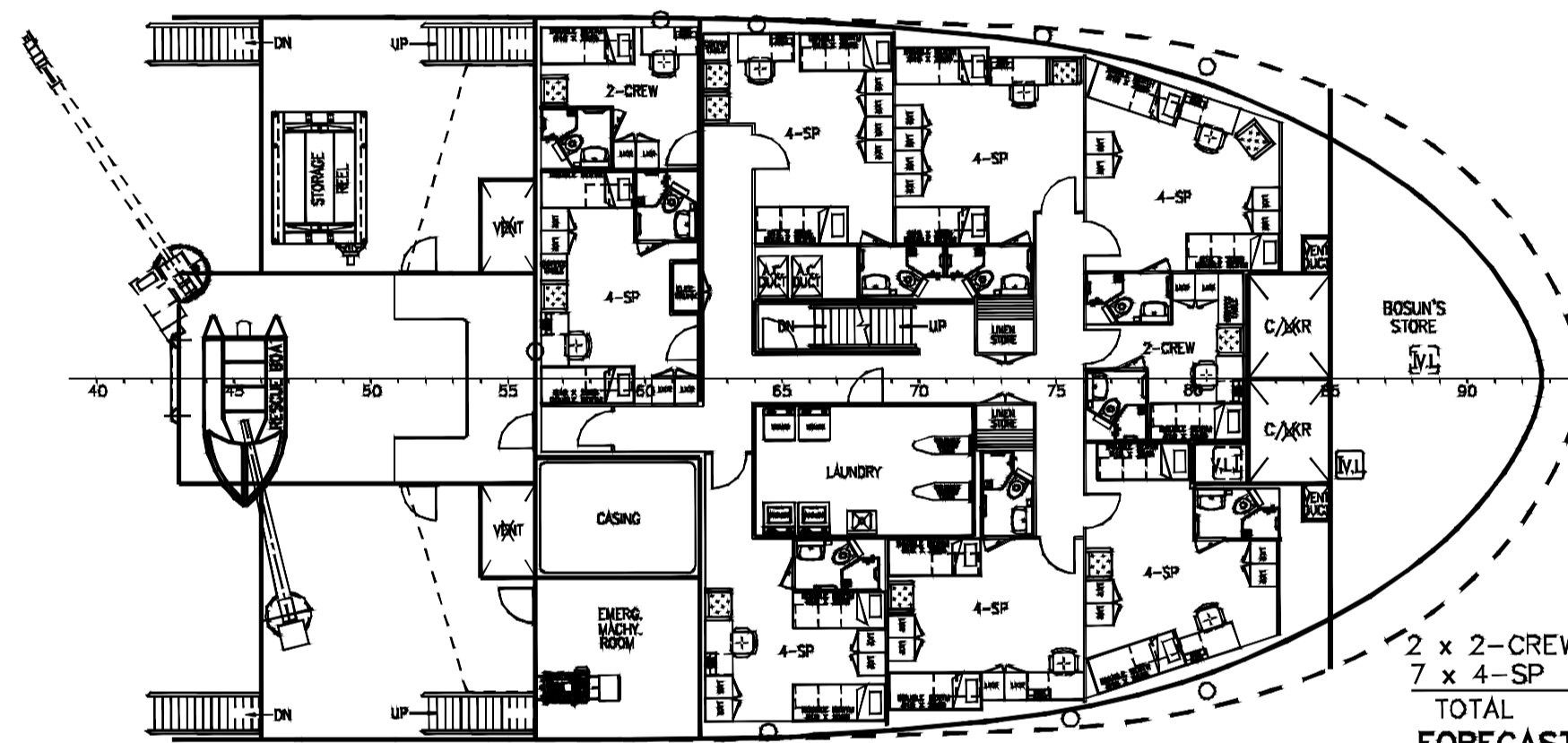
1 Man Cabin	: 5 Nos
2 Men Cabin	: 5 Nos
4 Men Cabin	: 11 Nos
Total	: 59 Person
Hospital	: 1 No
Recreation Room	: 1 No
Mess Room	: 1 No
Office	: 2 No

All Cabins are Fully Air Conditioned



PRINCIPAL DIMENSIONS

LENGTH (O.A.)	60.500 M
LENGTH (W.L.)	58.151 M
LENGTH (B.P.)	54.300 M
BEAM (M.L.D.)	15.800 M
DEPTH (M.L.D.)	6.500 M
DESIGN DRAFT	5.100 M
FUEL OIL	597 M ³
FRESH WATER	412 M ³
PERMANENT FRESH WATER BALLAST	80 M ³
DRILL WATER/CARGO FRESH WATER	514 M ³
MUD/BRINE	271 M ³
DRY BULK TANKS (4x1500 FT ³)	170 M ³
CLEAR DECK AREA	360 M ²
DECK CARGO (DECK LOADING = 7T/M ²)	500 TONS
MAIN PROPULSION ENGINE	2x2400 KW
SPEED (TRIALS)	12.5 KNOTS
BOLLARD PULL	80 TONS
CREW	14 MEN
SPECIAL PERSONNEL	45 MEN



- NOTE: -**
- THE CARGO FRESH WATER TANKS/DRILLING WATER TANKS ARE NOT DEDICATED CARGO FRESH WATER TANKS, AND MAY LOAD DRILL WATER.
 - EXEMPTION ON MASTLIGHT ARRANGEMENT TO BE APPLIED FOR.
 - THE VESSEL CAN WITHSTAND BOTTOM DAMAGE SPECIFIED IN REG II-1/9.8 OF SOLAS 1974 AS AMENDED.
 - THE DOOR TO STEERING GEAR COMPARTMENT ACCESS TRUNK ARE TREATED AS NON-WATERTIGHT.
 - SKYLIGHT IS PROVIDED FOR THE 2-CREW RM. AT FR.76-82 ON THE FORECASTLE DECK.
 - EMERGENCY FIRE PUMP IS STORED IN BOW THRUSTER COMPT.
 - WHERE DOORS OPEN INTO CORRIDOR, SELF-CLOSING DEVICE AND APPROPRIATE ARRANGEMENT TO BE PROVIDED TO AVOID INJURY TO PERSON.
 - A TOE BOARD OR KICK PLATE IS RECOMMENDED TO BE INSTALLED ON THE DECK BELOW THE LOWER RAIL COURSE.
 - MUD/BRINE TANKS SHALL CARRY POLLUTION HAZARD ONLY. SUBSTANCES HAVING A FLASHING POINT EXCEEDING 60°C LISTED IN IMO A.673.

REVIEWED

Details of this review are as indicated in the ABS letter

ABS

WITH ABS AMENDMENTS ON PAGES 1

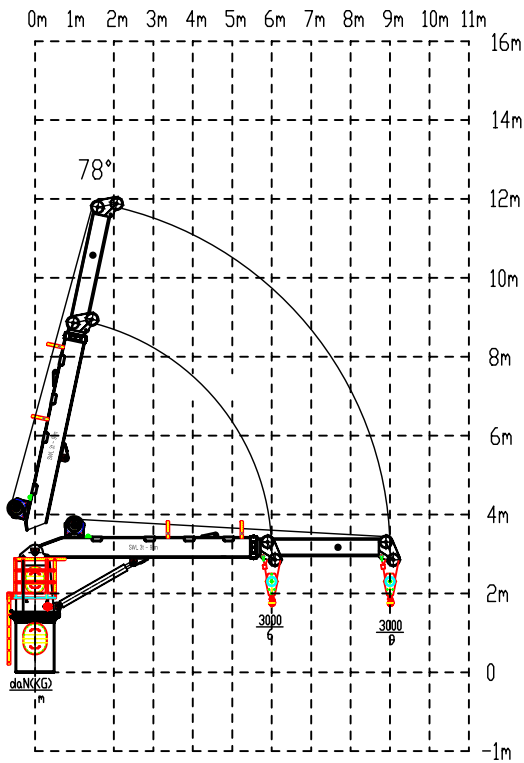
WITH ABS COMMENTS #s -N/A-

THIS DOCUMENT AND THE INFORMATION IT CONTAINS IS COPYRIGHT AND REMAINS THE PROPERTY OF KHAM CHUAN MARINE PTE. LTD. IT IS NOT TO BE COPIED IN WHOLE OR IN PART OR DISCLOSED TO ANY THIRD PARTY FOR ANY PURPOSE WHATSOEVER WITHOUT PRIOR WRITTEN CONSENT.

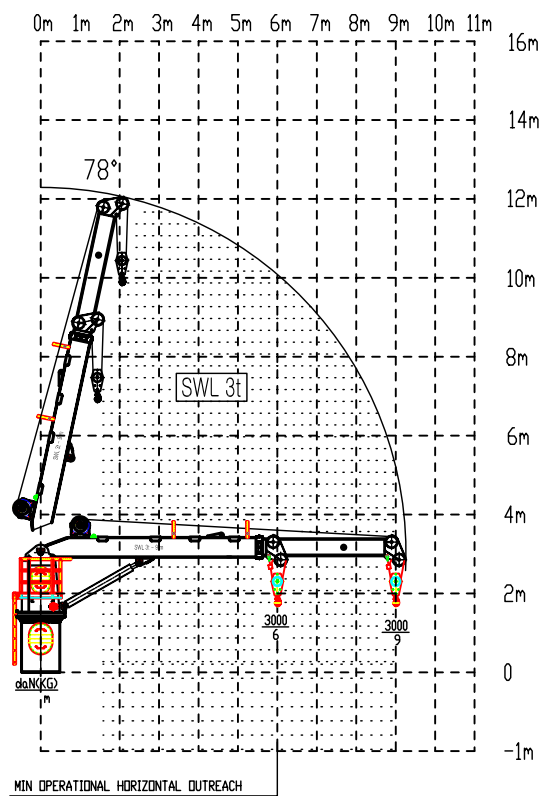
REV	DATE	MARK	ZONE	DESCRIPTION	MOD BY	CHK BY
REVISIONS						
CLIENT: ATLANTIC MARITIME GROUP PZE				SHIP: AOS VICTORY		
TITLE: GENERAL ARRANGEMENT PLAN						
SCALE: 1:150	DRAWN: VED	HULL NUMBER: --	DRAWING NUMBER: V942-G-01	REV: 0		
SIZE: A1	VERIFIED: SGA	DATE: 30-05-2020	SHEET: 1 OF 1			

THIS DRAWING IS THE PROPERTY OF VEDAM DESIGN & TECHNICAL CONSULTANCY AND CANNOT BE MADE PUBLIC, COPIED OR OTHERWISE USED WITHOUT VEDAM DESIGN & TECHNICAL CONSULTANCY WRITTEN PERMISSION.

WORK WITH HOOK



WORK WITH WINCH--SWL3000KG



HULL NO.: GS12139

PRESSIONE DI LAVORO=150bar

PORTATA OLIO =70L/min

SHIP NAME: ADS VICTORY

TYPE OF VESSEL: OFFSHORE SUPPORT VESSEL

OWNER: Atlantic Maritime Group

YARD: GUANGXIN SHIPBUILDING & HEAVY
INDUSTRY CO.,LTD

ABS registration no.: YY246729

4		
3		
2		
1		
REF	DESCRIPTION	C.L.(t)

设计					
校对					
审核					
工艺	标记	处数	更改文号	签名	日期
标准化	设计			标准化	
	校对			批准	
会签	审核			会签	
批准	工艺			日期	

Load Chart



江苏海泰船舶成套设备有限公司
JIANGSU HAITAI SHIP'S WHOLE SET CO., LTD.

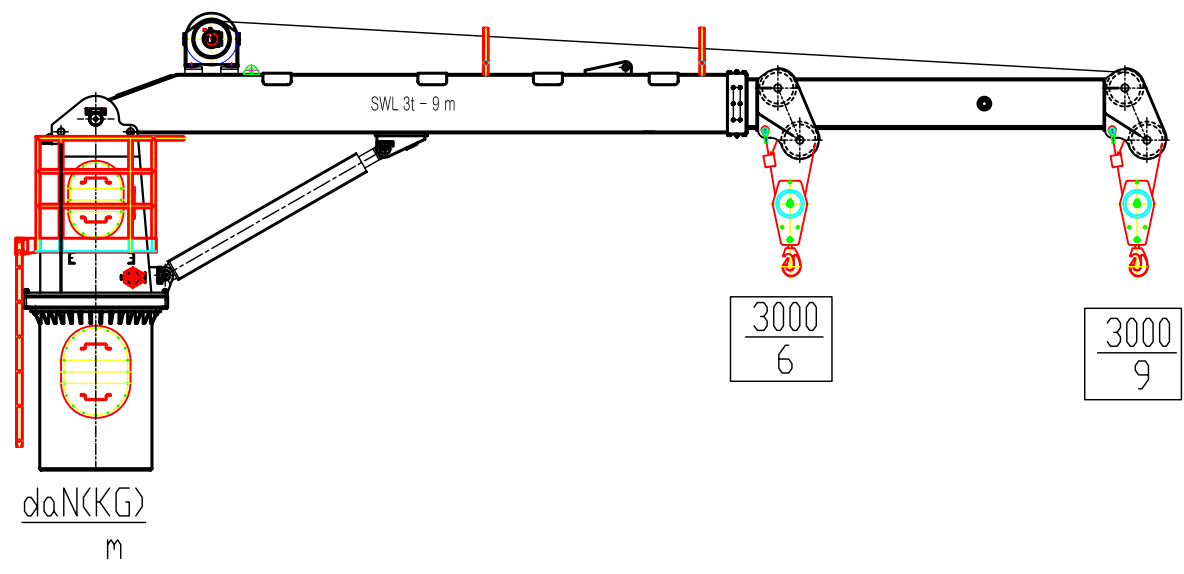
YSQP3/9液压伸缩起重机
Hydraulic Telescopic Crane

242TF3009DN-00

图样标记	重量	比例
	**kg	
共 1 页 第 1 页		

LOAD DIAGRAM FOR USE AT CRANE INCLINATION MAX 5° HELL - 2° TRIM

WORK WITH HOOK



WORK WITH WINCH--SWL3000KG

