



VEGA EGYPT 1



Atlantic Maritime Group FZE

www.atlanticnavigation.com

GENERAL PARTICULARS

Year of Build / Place	: 2017 / China
IMO Number	: 9754513
Call Sign	: V7XB5
Flag	: Panama
Class	: ABS
Notation	: ⚠A1, FFV1, OSR-C2, Offshore Support Vessel, Supply-HNLS, E, ⚠AMS, ⚠ACCU, ⚠DPS-2; HDC (5.5 T/m2, Main Deck from A.E to Fr.73), RW, SPS
GRT / NRT	: 2973 / 916
Vessel Manager	: Atlantic Maritime Group

DIMENSIONS

Length OA	: 75.00 m
Length BP	: 67.46 m
Breadth	: 17.25 m
Depth	: 8.00 m
Draft (Maximum)	: 6.60 m
Displacement @ Max.	: 5722 T
Draft Deadweight @ Max.	: 3263 T
Draft Lightship	: 2459 T

MACHINERY

Main Engine	: 2 x Niigata 8L28HX @ 750 RPM Total: 5916 BHP; 4412 kW
Gear Box	: HITACHI (CLUTCH) & KUMERA (Fi – Fi)
Main Generators	: 3 x Caterpillar C18, 492 kW, 415 V, 50Hz @ 1500 RPM
Shaft Generators	: 2 x Leroy Somer, 1000 kW, 415 V, 50 Hz
Emergency Generator	: 1 x Caterpillar C4.4, 93 kW, 415 V, 50 Hz @ 1500 RPM
Propellers	: 2 x Niigata; Z-Peller ZP-41, Azimuth Thruster, 242 RPM
Bow Thrusters	: 2 x Kawasaki, Tunnel Thruster, 650 kW, 10 T Thrust

FIRE FIGHTING & SAFETY EQUIPMENT

Fi-Fi Pumps	: 2 x 1790 m3 / hr @ 120 m Head
Fi-Fi Monitors	: 2 x 1200 m3 / hr with Remote Control
Ballast & Fire / GS Pump	: 2 x 80 m3 / hr @ 70 m Head
Emergency Fire Pump	: 1 x 35 m3 / hr @ 70 m Head
Foam Pump (Deck System)	: 1 x 143 m3 / hr @ 100 m Head
Foam Proportioned	: 1 x 2 m3
BA Compressor	: 1 x 225 Bar; Aerotecnica Coltri
Fixed CO2 System	: In Engine Room / Engine Casing / Machinery Space / Galley
Rescue Boat & Davit	: 1 x 6 Pax FRC (Open Type) & 23 KN Single Arm
Life Rafts	: 6 x 25 Pax & 2 x 15 Pax (Inflatable – Throw Type)
Life Buoys	: 8 Nos
Fire Hydrants	: 16 Nos (50 'A-Valve') & 6 Nos (65 'A-Valve')
Life Jackets	: 69 Nos

CAPACITIES & PERFORMANCE

Fresh Water Tank	: 550 m3
Fuel Oil Tank	: 766 m3
Drill Water / Water Ballast	: 1395 m3
Heeling / Drill Water	: 132 m3
Mud / Brine / RO Tank	: 739 m3
Bulk Storage Tank	: 228 m3
Foam Tank	: 12.7 m3
Detergent Tank	: 12.7 m3
Methanol Tank	: 132 m3
Methanol Pump	: 1 x 75 m3 / hr @ 60 m Head
Bilge Pump	: 2 x 60 m3 / hr @ 50 m Head
Ballast & Fire / GS Pump	: 2 x 80 m3 / hr @ 70 m Head
Fresh Water Cargo Pump	: 1 x 100 m3 / hr @ 85 m Head
Drill Water Pump	: 1 x 100 m3 / hr @ 80 m Head
Fuel oil Cargo Pump	: 2 x 150 m3 / hr @ 80 m Head
Mud Pump	: 2 x 75 m3 / hr @ 90 m Head
Deck Cargo Space	: 520 m2
Design Deck Load	: 5.5 T / m2
Deck Cargo Capacity	: 800 T
Mezzanine Deck Cargo Space	: 80 m2
Mezzanine Deck Load	: 3 T / m2
Speed	: 12.5 knots @ 100 % MCR 10.0 Knots @ 85 % CSR
Fuel Consumption	: 18.00 m3 / day @ 100 % MCR 10.00 m3 / day @ 85 % CSR
Bulk Air Compressor	: 2 x Air Man SWS 125; 20 m3 / min @ 6 bar
Starting / Service Air Compressor	: 2 x 30 m3 / hr @ 30 bar
Sewage Treatment Plant	: 57 Persons (Maximum 65 Pax)
Oily Water Separator	: USCH – 10; Capacity - 1 x 1.0 m3 / hr
Fresh Water Maker	: 2 x Java; Capacity – 10 m3 / day (Each)
Chiller & Freezer	: 1 Month for 57 Persons
Dispersant System	: Available

ACCOMMODATION

1 Man Cabin	: 6 Nos
2 Man Cabin	: 13 Nos
3 Man Cabin	: 3 Nos
4 Man Cabin	: 4 Nos
Total	: 57 Person
Hospital	: 1 No
Recreation Room	: 1 No
Mess Room	: 1 No
Office	: 2 No

All Cabins are Fully Air Conditioned

75.0 m / 5916 BHP / MPSV DP2 / Fi-Fi 1 with Offshore Crane

GALLEY & LAUNDRY

Electric Cooking Range	: 2 x 4 Hot Plates
Food Warmer	: 2 x Bain Marie
Chiller & Freezer	: 1 Month for Full POB
Refrigerator	: 1 x 270 L (in Mess Room)
	: 1 x 770 L (in Galley)
Electric Water Boiler	: 1 x 30 Liters
Dish Washer	: 1 Unit
Washing Machine	: 5 x 10 Kg
Dryer	: 5 Units
Iron	: 1 with Ironing Table

NAVIGATION & COMMUNICATION EQUIPMENT

Fixed VHF	: 2 x Furuno
Portable VHF (GMDSS)	: 3 x Mc Murdo R5
MF/ HF	: Furuno FS-2575C
Navtex	: Furuno NX-700B
Auto Pilot	: Anschutz; Pilot Star D
Magnetic Compass	: 1 x Lilley Gillie MK 2000S
Gyro Compass	: 3 x Anschutz GYRO STD 22
AIS	: Furuno; FA 150
GPS	: Furuno Navigator GP-150
Eco Sounder	: 1 x Furuno; FE 700
Speed Log	: 1 x Furuno; DS-80
GMDSS	: Area A1+A2+A3
Inmarsat C	: Furuno Felcom-18
Radar	: 2 x Furuno; FAR 2117 / FAR 2137S
EPIRB	: 1 x ARC; RLB - 41
SART	: 2 x Mc Murdo S4 Rescue
Intercom/ P.A System	: Jotron Phontech
Anemometer	: 2 x OMC 139D, 1 x OMC 139
Barometer	: DYM3
V-SAT	: V-Sat Broadband (High Speed)

DECK MACHINERY & EQUIPMENT

Offshore Pedestal Crane	: 1 x Red Rock ORCT 1150; Hydraulic operated, Telescopic crane with Man riding
Lifting Capacity (Main Winch)	: 10 T (Single Fall)
Lifting Capacity (Aux Winch)	: 6 T (Single Fall)
Telescopic Jibs	: 23 m – 45 m
Safe Working Loads (Main Hook)	: 40 T @ 5.5 m – 8 m radius
	: 20 T @ 5.5 m – 15 m radius
	: 10 T @ 5.5 m – 17 m radius
Safe Working Loads (Aux. Hook)	: 6 T @ 5.5 m – 30 m radius
	: 2 T @ 5.5 m – 45 m radius
Maximum Load for AHC Mode	: 10 T @ 5.5 m – 15 m radius
Personal Lift	: 1 T @ 4 – 45 m radius
Slewing Speed (Approx.)	: 0 – 0.6 RPM
Hoisting & Lowering Speed	
4 Wire Falls	: 40 T @ 0 – 10 m / min
2 Wire Falls	: 20 T @ 0 – 22 m / min; 10 T @ 0 – 22 m / min
1 Wire Fall	: 10 T @ 0 – 44 m / min; 6 T @ 0 – 50 m / min
	: 10 T @ 0 – 75 m / min (AHC Mode)
Provision Crane	: 1 x Telescopic Crane; SWL 3T @ 2 m – 10 m Radius
Windlass	: 1 x Mentrade; Hydraulic; 13 T @ 18 m / min
	Double Gypsies with Double Warping Ends
Anchors	: 2 x 2020 KG, HHP Anchor
Chains	: 14 Shots each side 935 m x 46 mm
Tugger Winch	: 2 x Mentrade; Hydraulic; 10 T @ 24 m / min
Capstans	: 2 x Mentrade; Hydraulic; 10 T @ 25 m / min

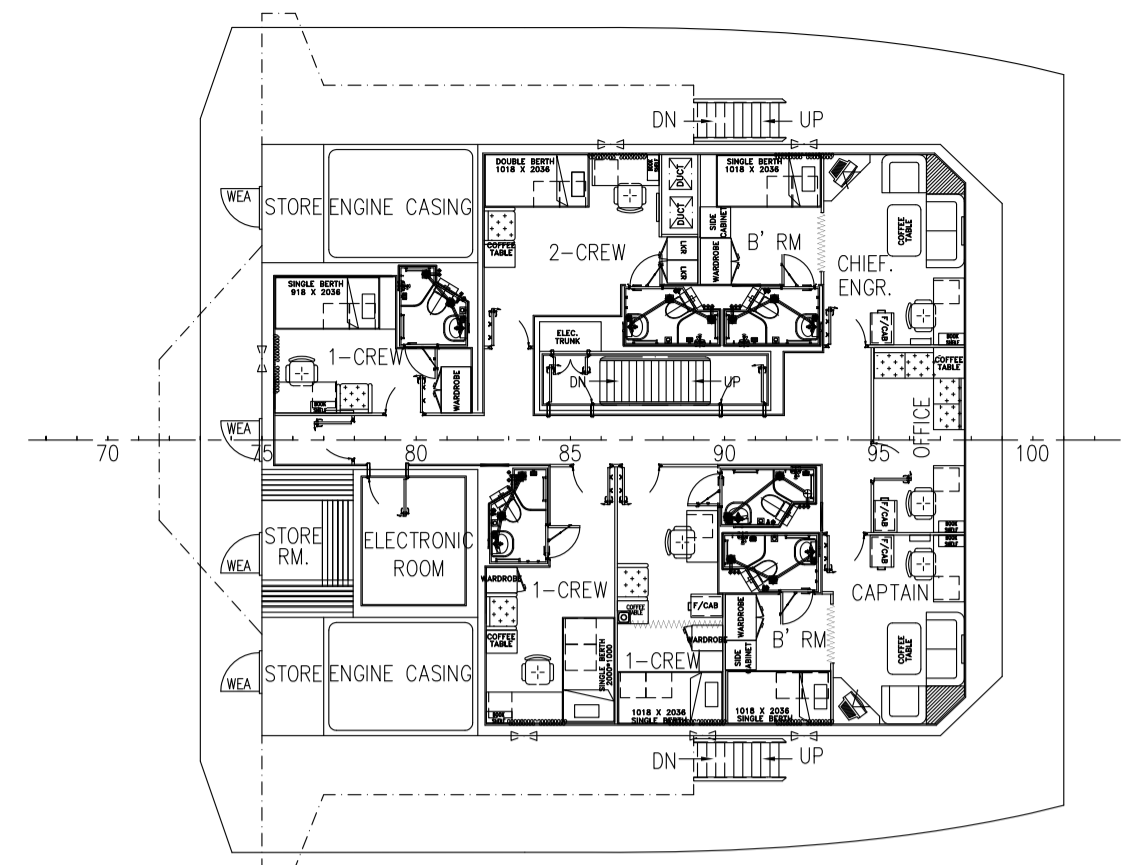
ELECTRICAL SUPPLY & SOCKETS ON MAIN DECK

Power Supply Sockets (Deck)	: 3 x 415 V @ 32 Amps
	: 2 x 415 V @ 63 Amps
	: 2 x 220 V @ 32 Amps

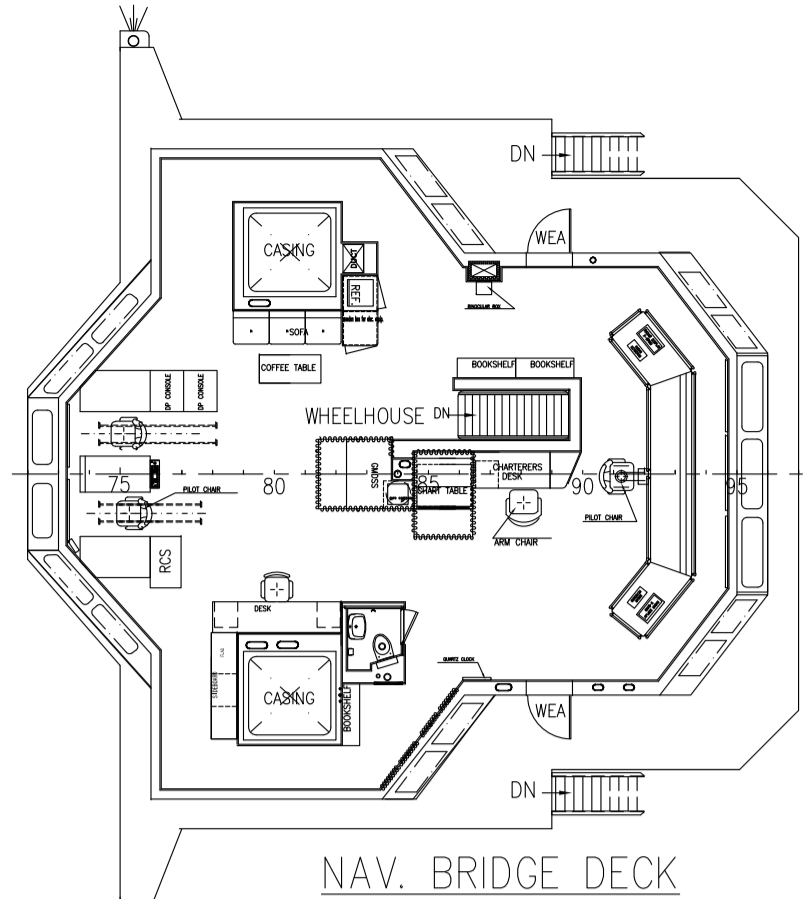
DP SYSTEM

Make	: Kongsberg K-Pos-21 DP-2
	: 2 x DGPS, 1 x HIPAP, 1 x Cyscan.
	: 3 x Gyro Compasses
	: 3 x Wind Sensors
	: 3 x Motion Reference Units MRUs
	: 1 x c-Joy Independent Joystick System





OFFICER DECK
 5 x 1-CREW = 5 MEN
 1 x 2-CREW = 2 MEN
 TOTAL = 7 MEN

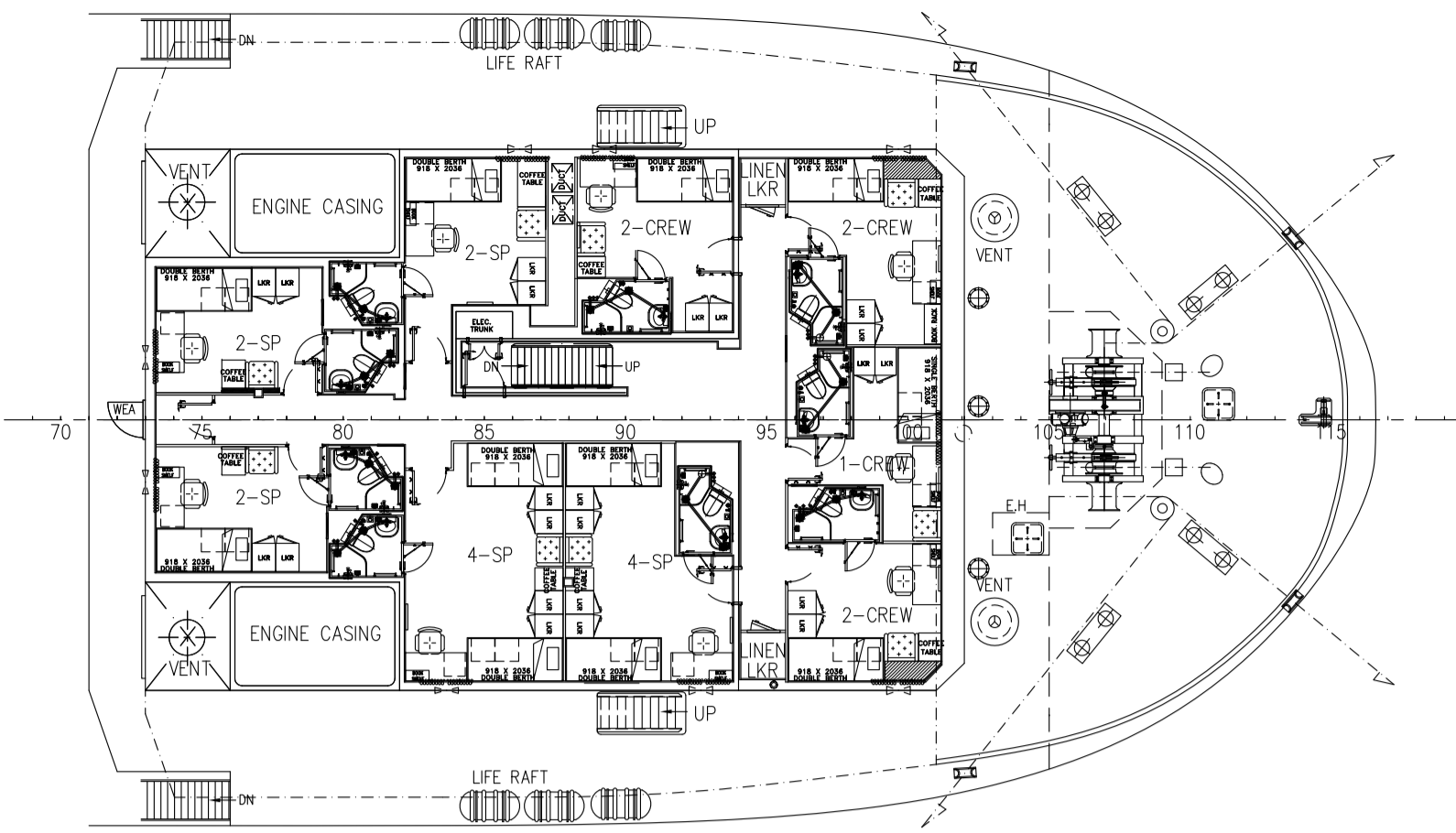


NAV. BRIDGE DECK

PRINCIPAL DIMENSIONS

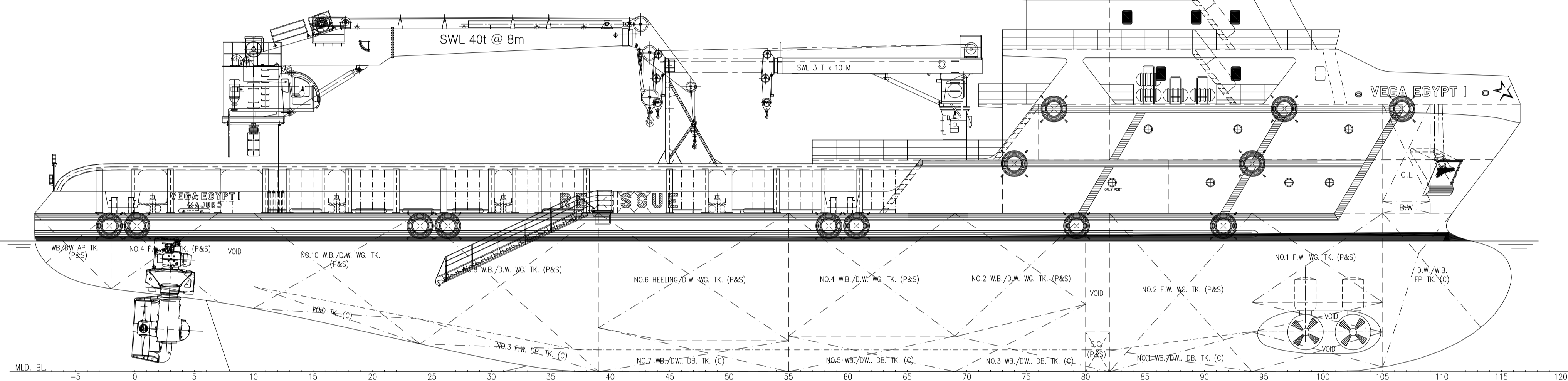
LENGTH (O.A.)	75.000 M
LENGTH (W.L.)	72.515 M
LENGTH (B.P.)	67.468 M
BEAM (MLD.)	17.250 M
DEPTH (MLD.)	8.000 M
MAX. DRAFT (MLD.)	6.600 M
TOTAL DWT	3262 TONS
FUEL OIL	770 M ³
FRESH WATER	550 M ³
MUD/ BRINE /R.O.	730 M ³
METHANOL	130 M ³
MEZZANINE DECK (DECK LOADING = 3T/M ²)	80 M ²
CLEAR DECK AREA	520 M ²
DECK CARGO (DECK LOADING = 5.5T/M ²)	800 TONS
DRY BULK TANKS (4x2000 FT ³ =8000 FT ³)	226 M ³
MAIN PROPULSION	2 X 3000 PS
SPEED (TRIALS)	13.0 KNOTS
COMPLEMENT	14 MEN
	CREW = 14 MEN
	SPECIAL PERSONEL = 43 MEN

CLASS & NOTATION :
 ABS * A1 (E) OFFSHORE SUPPORT VESSEL (SUPPLY-HNLS, FFV1, OSR-C2), SPS, HDC (5.5T/M2, MAIN DECK), RW
 *AMS, *ACCU, *DPS-2

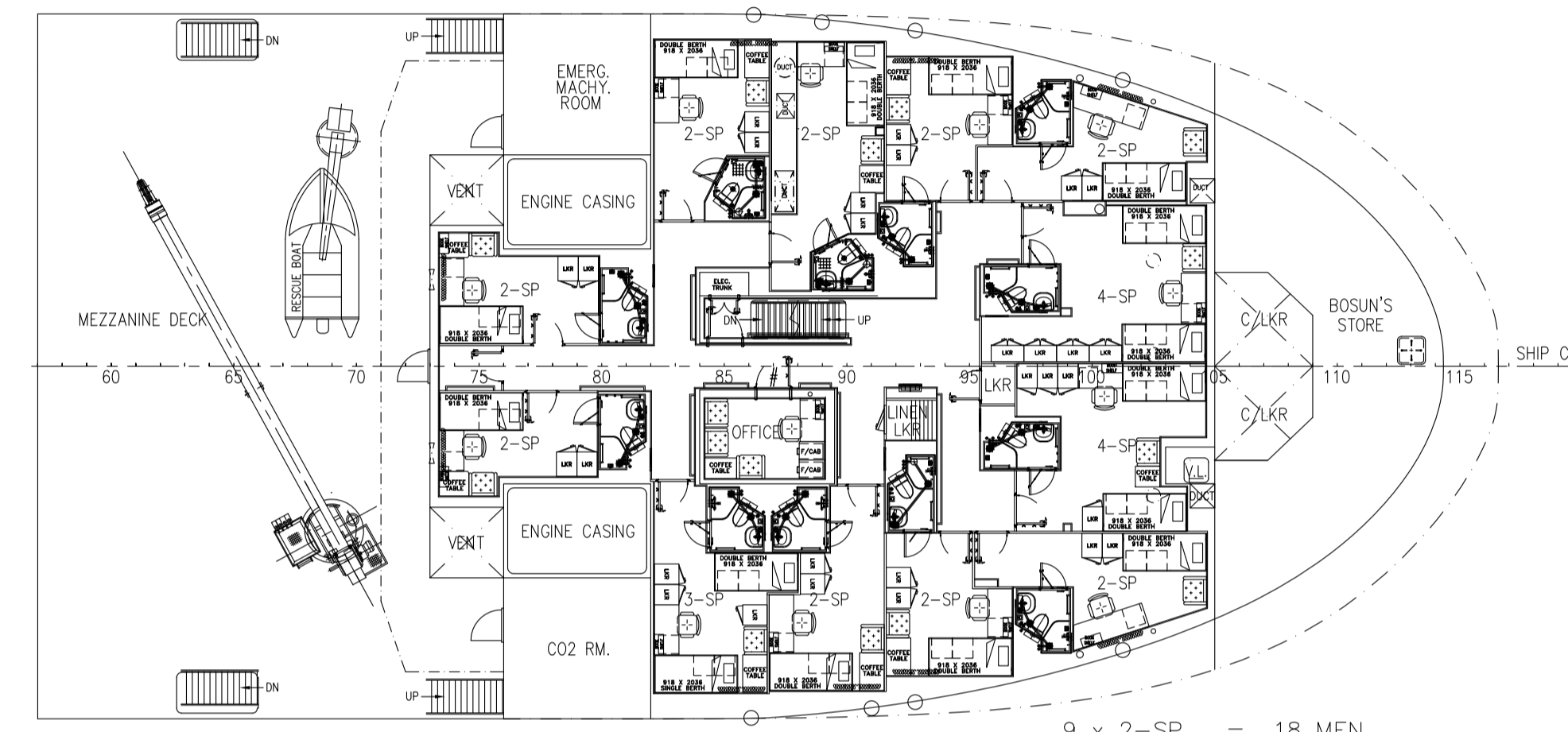


UPPER FORECASTLE DECK PLAN

1 x 1-CREW = 1 MEN
 3 x 2-CREW = 6 MEN
 3 x 2-SP = 6 MEN
 2 x 4-SP = 8 MEN
 TOTAL = 21 MEN

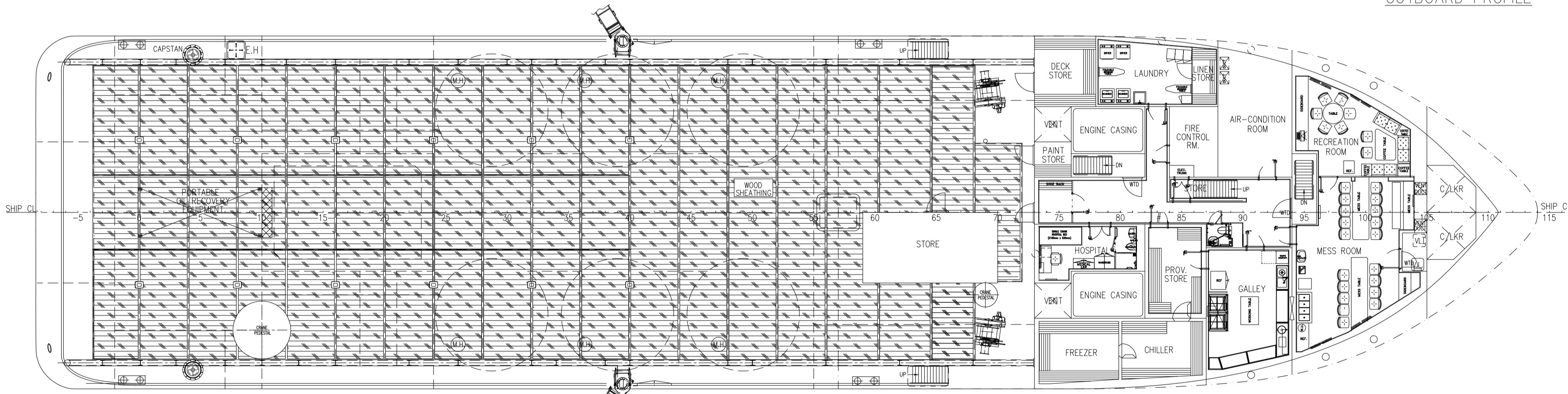


OUTBOARD PROFILE

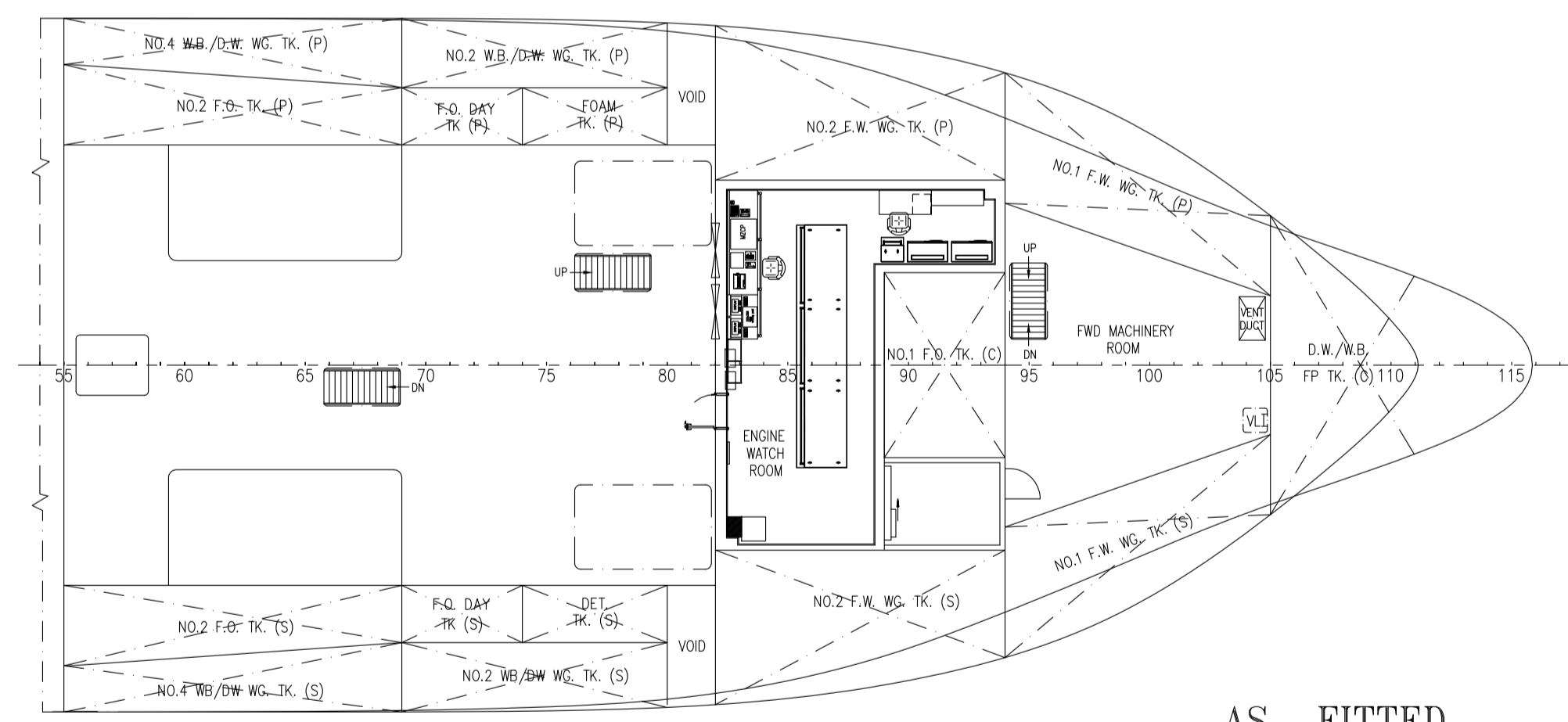


FORECASTLE DECK PLAN

9 x 2-SP = 18 MEN
 1 x 3-SP = 3 MEN
 2 x 4-SP = 8 MEN
 TOTAL = 29 MEN

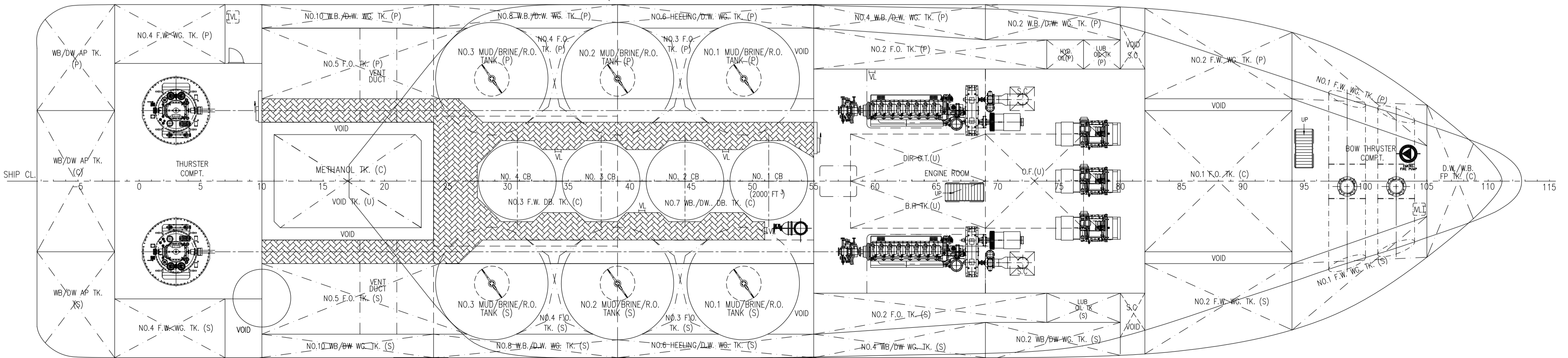


MAIN DECK PLAN



TWEEN DECK PLAN

AS FITTED



BELOW DECK PLAN

NOTE:-

- PLEASE NOTE MUD/BRINE/R.O. TANK SHALL CARRY RECOVERY OIL OF A FLASHING POINT EXCEEDING 60°C AND POLLUTION HAZARD ONLY SUBSTANCES OF A FLASHING POINT EXCEEDING 60°C LISTED IN IMO A.673(16).
- # APPROPRIATE ARRANGEMENTS TO AVOID INJURY TO PERSONS IN THE CORRIDOR SHALL BE CONSIDERED.
- A TOE BOARD OR KICK PLATE BE INSTALLED ON THE BRIDGE WING DECK BELOW THE LOWER RAIL COURSE.
- DECK AREA FOR HANDLING OIL AND OIL-BASED LIQUID ARE TO BE PROVIDED WITH A COATING OF AT LEAST 150MM HEIGHT AROUND ALL PUMPS, TRANSFER FLANGE, CONNECTIONS AND OTHER EQUIPMENT WHERE LEAKAGE MAY OCCUR. COATING FOR RECOVERY OIL MAY BE OF REMOVABLE TYPE.
- BALLAST WATER TANKS/DRILLING WATER TANKS ARE NOT DEDICATED SEAWATER BALLAST TANKS.

M.V. "VEGA EGYPT 1"

7.	LIFTRAFTS & DOOR OPENING FOR STORE UPDATED	YUMINGYE	16.08.17
6.	NO.6 DW/WG TK(P&S) AMENDED AS DW/HEELING TK.	YUMINGYE	12.06.17
5.	FREQUENCY CONVERTER RM. AMENDED AS STORE	YUMINGYE	09.05.17
4.	MEZZ DK. EXTENDED TO SIDE, GANGWAY RELOCATED, RESCUE ZONE ENLARGED	YUMINGYE	07.04.17
REV.	DETAILS OF MODIFICATION	BY	DATE

KC KHIAM CHUAN MARINE PTE LTD

31, BUKIT BATOK CRESCENT, #01-53, THE SPLENDOUR SINGAPORE 658070 Tel:+65-67753383 Fax:+65-67753788 Email: khiamchuan@kcm.com.sg

PROJECT FUJIAN SOUTHEAST SHIPBUILDING CO.,LTD
75m PLATFORM SUPPLY VESSEL

GENERAL ARRANGEMENT

CLASSIFICATION	HULL NO.	FN75M-19		
DRAWN	CHECKED	SCALE	DRAWING NUMBER	REV.
YUMINGYE		1:150	KCM/Q663 - G1	
16-12-13				

THIS DOCUMENT AND THE INFORMATION IT CONTAIN IS COPYRIGHT AND REMAINS THE PROPERTY OF KHIAM CHUAN MARINE PTE LTD. IT IS NOT TO BE COPIED IN WHOLE OR IN PART OR DISCLOSED TO ANY THIRD PARTY FOR ANY PURPOSE WHATSOEVER WITHOUT PRIOR WRITTEN CONSENT.