

# DELTA 22

## Jack Up Barge



### PRINCIPAL PARTICULARS

Length Overall:	46 m
Length (inc. helideck):	67.7 m
IMO:	8753134
Max. Operating Water Depth:	48.76 m
Max. Draught:	3.65 m
Width:	47.5 m
Hull Depth (moulded):	5.50 m
Max. Variable Load:	2899 kips
Helideck:	Sikorsky S61 N:9.297T
Year Built:	1980(rebuilt: 2013)
GRT/NRT:	4229 / 1268
Class:	ABS
Flag:	Panama
Call Sign:	3FHE

### POWER EQUIPMENT

<b>Main Generator:</b>	4 x Caterpillar CAT D 399 TA Rated 1215 BHP @ 1200 RPM Each driving a KATO 10130KW, 1250KVA, PF 0.8, 600v, 60HZ Generator
<b>Emergency Generator:</b>	1 x CAT D 379 TA Rated 549 BHP @1200 RPM Driving a Kato 400 KW Generator
<b>Jacking Engine:</b>	3 x Jacking Engine

### JACKING SYSTEM

<b>Jacking System:</b>	electric/hydraulic
<b>Jacking Speed:</b>	60 ft/hr
<b>Safety System:</b>	Up Position – Hyd. relief valve Down Position – Counter Balance valve

### CAPACITIES

<b>Fuel Oil Tanks:</b>	2215 BBL / 673 kips
<b>Day Tanks:</b>	10 kips
<b>Waste Oil Tanks:</b>	2 kips
<b>Lube Oil Tanks:</b>	4 kips
<b>Portable Water Tanks:</b>	2,107 BBL / 288 kips
<b>Fresh Water Tanks:</b>	983 kips

### JACKING SYSTEMS AND LEGS

<b>No. of Jack/Pinions:</b>	18 Pinions each leg
<b>Jacking Speed:</b>	1 ft/min variable (raising/lowering)
<b>Legs:</b>	3 nos
<b>Type:</b>	Rack and Pinion Solid
<b>Length:</b>	79 m (inc. spud can)

## DECK EQUIPMENT

### Deck Crane Stdb

Type:	Bucyrus Erie MK-60
Location:	Main Deck Stdb Stern
Boom Length:	30.48 m
Radius/Load:	6.1 m / 47.5 T (main hoist) All radius / 5.4 T (aux.hoist)

### Deck Crane Port

Type:	MLT PCM 120
Location:	Main Deck Port
Boom Length:	36.5 m
Radius/Load:	8.5 m / 38.7 T

## ANCHOR WINCHES

### 2 x Baker Marine Services Series 6020

**Winches:** Each with 2500 ft. of 32 mm wire rope  
Although there are no Anchors, can still be used as Mooring Winches

## RADIO AND NAVIGATION

AIS:	1 x Samyung SI 30 D-E
SSB	1 x JRS Model JSB-1 76
VHF:	1 x Sailor RT2048
MF/HF DSC:	2 x Samyung SRG1 1 50 DN
Radar:	1 x ICOM MR 1200
Gyro Compass:	None
SART:	2 x SRC CRT-100
AERO VHF radios:	1 x ICOM IC A200
EPIRB:	1 x KANNAD 406
Navtex Receiver:	1 x McMurdo NAV 7
GPS Navigator:	2 x Furuno/Comnav GP 32/G2
SSAS:	1 x Marine Track Lite
Helicopter beacon:	Southern avionics DS410

## LIFE SAVING & HSE

Liferafts:	1 x 20 men; 4 x 25 men
Lifejackets:	182 sets
Lifebuoys:	14 sets
Rescue Boats:	1 x 45 men 1 x 50 men

## MISCELLANEOUS

Sewage Treatment:	one set
Waste Compactor:	one set
Fresh Water Maker:	two 20 x 2 = 40 t. p/d

## THRUSTERS

<b>AFT:</b>	2 x Wartsila LTC CS 175-SLIWO, electric motor, power: 500 kW CPP Propeller, dia: 1600 mm
<b>Forward Thruster:</b>	2 x Schottel NAV 300/441, engine driven diesel KHD SBA M816, power: 482 kW CPP propeller dia: 1400 mm
<b>Thruster Controls:</b>	2 x thruster @aft, stdb & port located in storage room 2 x thruster @fwd, stdb & port located in thruster platform The Fwd & Aft Thrusters are used for Transit & Positioning. Both are controlled from The Bridge House on the Top Deck.

## ACCOMMODATION

<b>Configuration:</b>	6 x 1 man cabins 6 x 2 men cabins 15 x 4 men cabins 1 x 6 men cabins <u>1 x 8 men cabins</u>
<b>Total:</b>	92 men
<b>Recreational Room:</b>	1 no.
<b>Utility:</b>	1 no.
<b>Galley:</b>	1 no.
<b>Mess Room:</b>	2 nos.
<b>Office:</b>	4 nos.

## FIRE-FIGHTING & ANTI- POLLUTION

### EXTERNAL:

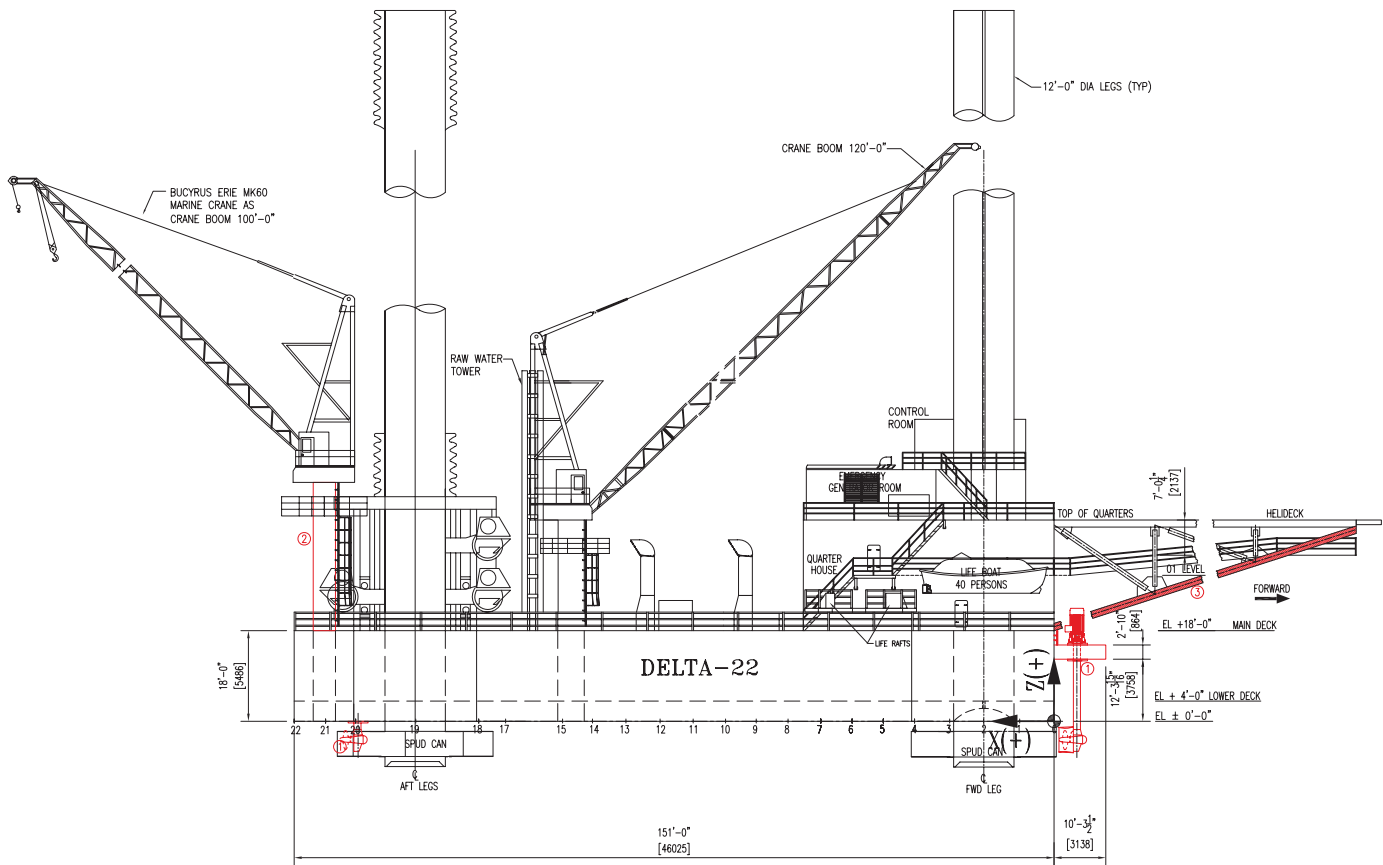
#### Foam System Water Cannon

<b>Fire Pump:</b>	1 x 500 gal/min
<b>Water Monitor:</b>	2 x 6 ltrs/min
<b>Water/Foam:</b>	432 liters
<b>Fireman's outfit:</b>	2 x proximity suits

## GALLEY

<b>Refrigerator Capacity:</b>	5 cu. ft
<b>Freezer Capacity:</b>	walk-in refrigerator and freezer
<b>Washing Machine:</b>	2 x industrial washing machine
<b>Dryer:</b>	2 x queen dryers




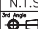


OUTBOARD PROFILE

NOTES:-  
 1. ALL THE DIMENSIONS ARE IN FEET-INCH, U.N.O  
 2. REFER GPMC-3082-2A-DG-103-B1-SHEET 1 OF 5 FOR DETAILS OF ADDED ITEMS.

REFERENCE AXIS:-  
 VCG IS POSITIVE ABOVE KEEL.  
 LCG IS POSITIVE AFT OF FRAME-0.  
 TCG IS POSITIVE TO STBD AND NEGATIVE PORT.

HULL DIMENSIONS  
 LENGTH (MLD) - 151'-0"  
 BREADTH (MLD.) - 18'-0"  
 DEPTH (MLD.) - 18'-0"

	B1	20/06/2012	ISSUED FOR REVIEW	PMR	SMS	DPV
CLIENT REV.	CPMC REV.	ISSUE DATE	REASON FOR ISSUE	DRAWN BY	CHECKED BY	APPROVED BY
Client		Project				
DELTA/ATLANTIC NAVIGATION FZE.		DELTA 22 UPGRADATION				
 GREEN PALM MARINE CONSULTANCY.FZE P.O. Box 40334, Falcon City, Suite 712, Dubai, UAE. M: +971 50 4331465, Tel: +971 4 3002246 Email: gpmc.qtr@gmail.com		THIS DOCUMENT IS CONTROLLED DOCUMENT AND ANY UNAUTHORIZED REVISIONS WILL BE IDENTIFIED BY A RED LINE AND TO BE MADE IN CONSULTATION WITH THE CLIENT.				
Project Number 3082	Client Document Number				Client Revision	
<b>OUTBOARD PROFILE</b>						Scale N.T.S
<b>GENERAL ARRANGEMENT (PROPOSED)</b>						 Project A3 Client Revision B1
GPMC DRAWING No. GPMC/3082/2A/DG/103			2/5			