



# Atlantic Capella



## Atlantic Maritime Group FZE

[www.atlanticnavigation.com](http://www.atlanticnavigation.com)

NAME OF VESSEL : ATLANTIC CAPELLA  
 CALL SIGN : T2ZGS  
 PORT OF REGISTRY : FUNFUNATI  
 FLAG AUTHORITY : TUVALU  
 IMO NUMBER : 9746853  
 OFFICIAL NUMBER : 4201  
 CLASS NOTATION :  
 OPERATION TYPE : ACCOMMODATION WORK BOAT :  
 TRADE LIMIT : UNRESTRICTED :  
 PLACE OF ORIGIN : JINGJIANG, CHINA.  
 YEAR BUILT : 2015

Length Overall : 70.50 m  
 Beam Moulded : 19.52 m  
 Depth Moulded : 4.88 m  
 Draft Moulded : 3.50 m  
 Deadweight : 1292 T  
 GRT : 2937 mt  
 NRT : 881 mt  
 Clear Deck Area : 550 m<sup>2</sup>

Deck Loading : 7.0T/m<sup>2</sup>

### PERFORMANCE

Speed & : Max 13 kts @ 708 ltrs/hr @100%  
 Fuel consumption : Eco 12 kts @ 580 ltrs/hr. @ 75%  
 : Main Generator @ 100% / 450kw

### MACHINERY

Main Engine : 2 x 2000 BHP (Cummins)  
 Propulsion Sys : 2 x CPP in Kort Nozzles (Berg)  
 Shaft Generator : 2 X 850 KW (Stamford)  
 Main Generator : 3 x 450kw diesel driven, 415 V, 50  
 HZ (CAT)  
 Emergency Genset : 1 x 136 kw (Cummins)  
 Bow Thruster : 1 x 8 MT (Kawasaki)

### MAIN PUMPS

Bilge Pump : 1 x 5 m<sup>3</sup>/hr @29m head  
 Bilge & Balast : 1 x 60 m<sup>3</sup>/hr @50m head  
 GS & Fire Pump : 1 x 60 m<sup>3</sup>/hr @50m head  
 FO Transfer : 2 x 20m<sup>3</sup>/hr @20m head  
 FO Cargo Pump : 1 x 100 m<sup>3</sup>/hr @75m head  
 Drill Water Pump : 1 x 200 m<sup>3</sup>/hr @250m head  
 FW Cargo Pump : 1 x 100 m<sup>3</sup>/hr @75m head

Oil Water Separate : Hansun Boss 25t @ 5.6 m<sup>3</sup>/hr  
 Air Compressor : SPERRE, 60m<sup>3</sup>/hr.30 bar

### CAPACITIES

Fuel Oil Tank : 596 m<sup>3</sup> / 506.54 mt  
 Fresh Water Tank : 694.97 m<sup>3</sup> / 694.97 mt  
 Drill Water Tank : 11098 m<sup>3</sup> / 1125.52 mt  
 Sewage Tank : HANSUN, 200 man/day

Chiller/Freezer : 23 m<sup>3</sup>

### CRANAGE

Main Crane : 40 T @ 10 M, API 2C (SCM)  
 Auxiliary crane : 3 T SWL @ 9 m radius (SCM)  
 (provision crane)

### COMMUNICATIONS

SSB + NBDP : 1 x Furuno FS-2575  
 VHF : 2 x Furuno FM-8900S  
 VSAT : SpeedCast

### RADIO & NAVIGATION EQUIPMENT

GMDSS SYSTEM : A1 + A2 + A3 Area  
 Radar(Furuno) : 2 x X-Band, Furuno FAR-2817  
 Gyro Compass : 1 x Anschutz STD-22  
 Gyro Repeater : 3 x Anschutz + 3 unit inside Bridge  
 Magnetic Compass : 1 x Lilley & Gillie  
 AIS : 1 x Furuno FA-150  
 EPIRB : 1 x SRC CEP-100  
 Immarsat C : 1 x Furuno Falcom-18  
 Echo Sounder : 1 x Furuno FE-800  
 Speed Log : 1 X Furuno RD-20  
 Navtex Receiver : 1 x Furuno NX-700A  
 GPS Plotter : 2 x Furuno GP-170  
 Weather Fax : 1 x Furuno FAX-408

### WATERMAKER

HANSUN HSRO-30 Reverse Osmosis 2 x 30 T/day

### ANCHOR & MOORING

4 Point Mooring : 4 x 40T @ 10m/min (MEP)  
 Capstan : 2 X 15 T @ 10 M / Min (MEP)  
 Windlass : 1 x 10 T @ 10m/ min (MEP)  
 Mooring Anchor : 4 x 5T Flipper Delta + 2 spare  
 Mooring Wire : 4 x 42mm x 1200mtr  
 CCTV : 8 Camera with 2 TB memory

### SAFETY & FIREFIGHTING

Life Boats : 2 x 75 pax  
 Life buoy : 14 pcs + 2 pcs MOB marker buoy  
 Life Rafts : 16 x 25 pax, 2 x 15 pax  
 Fire Extinguisher : Dry powder 43x6kg + 30 spare, CO<sub>2</sub> 3 x 5kg  
 + 3 spare, FORK 1 x 9 ltr, Foam 1 x 45 ltr,  
 2 x 9 ltr. Foam applicator 1 x 20 ltr  
 FIFI Pump : Class 1, FFS @ 2 x 1500 m<sup>3</sup>/hr.  
 Fixed CO<sub>2</sub> System : 20 cylinders x 45kg  
 Foam tank : 1 x 13.3 m<sup>3</sup> / 13.26 mt  
 Auto Sprinkler : Accommodation, Public area  
 Fireman outfit : 8 set  
 Smoke Detector : Fixed 141 smoke detector / 8 heat detector  
 Fire Alarm Panel : 1 on Bridge/ 1 in E/Room  
 B. Apparatus : 10 set (2 set IMDG) + 20 spare bottles  
 EEBD : 18 set

### GAS DETECTION SYSTEM

Fixed gas detector : 8 unit H<sub>2</sub>S + 8 unit LEL

### ACCOMMODATION

#### TOTAL POB: 193 PERSONS

6 Single Rooms : 1 changing room/gym  
 4 Double Rooms : 1 x 95 pax mess room/dining  
 1 Triple Rooms : 1 smoking room  
 44 Four Men Rooms : 1 dark room  
 3 offices : 2 meeting room on bridge  
 1 Hospital : 1 officer mess  
 1 Surau : 1 toilet at main deck



BUREAU VERITAS Section ....27702N...

VU avec observations

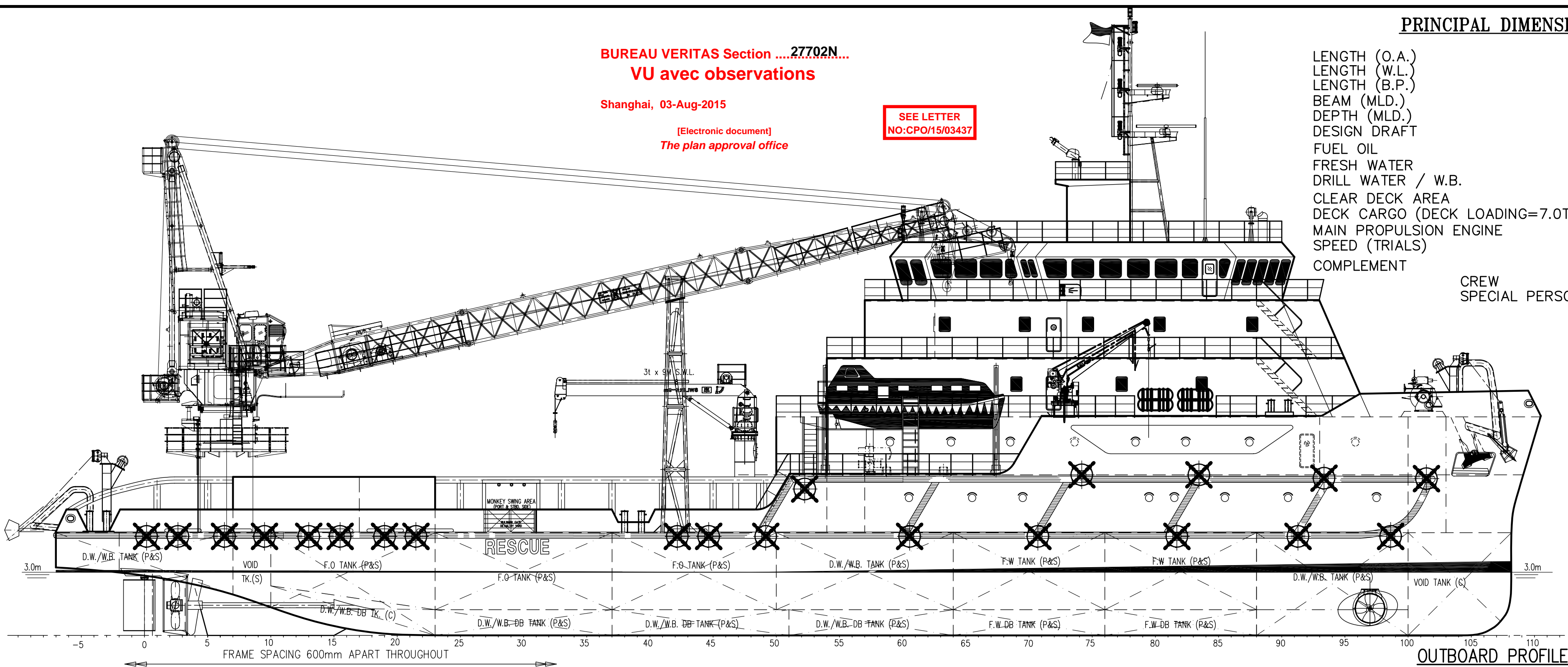
Shanghai, 03-Aug-2015

(Electronic document)  
The plan approval office

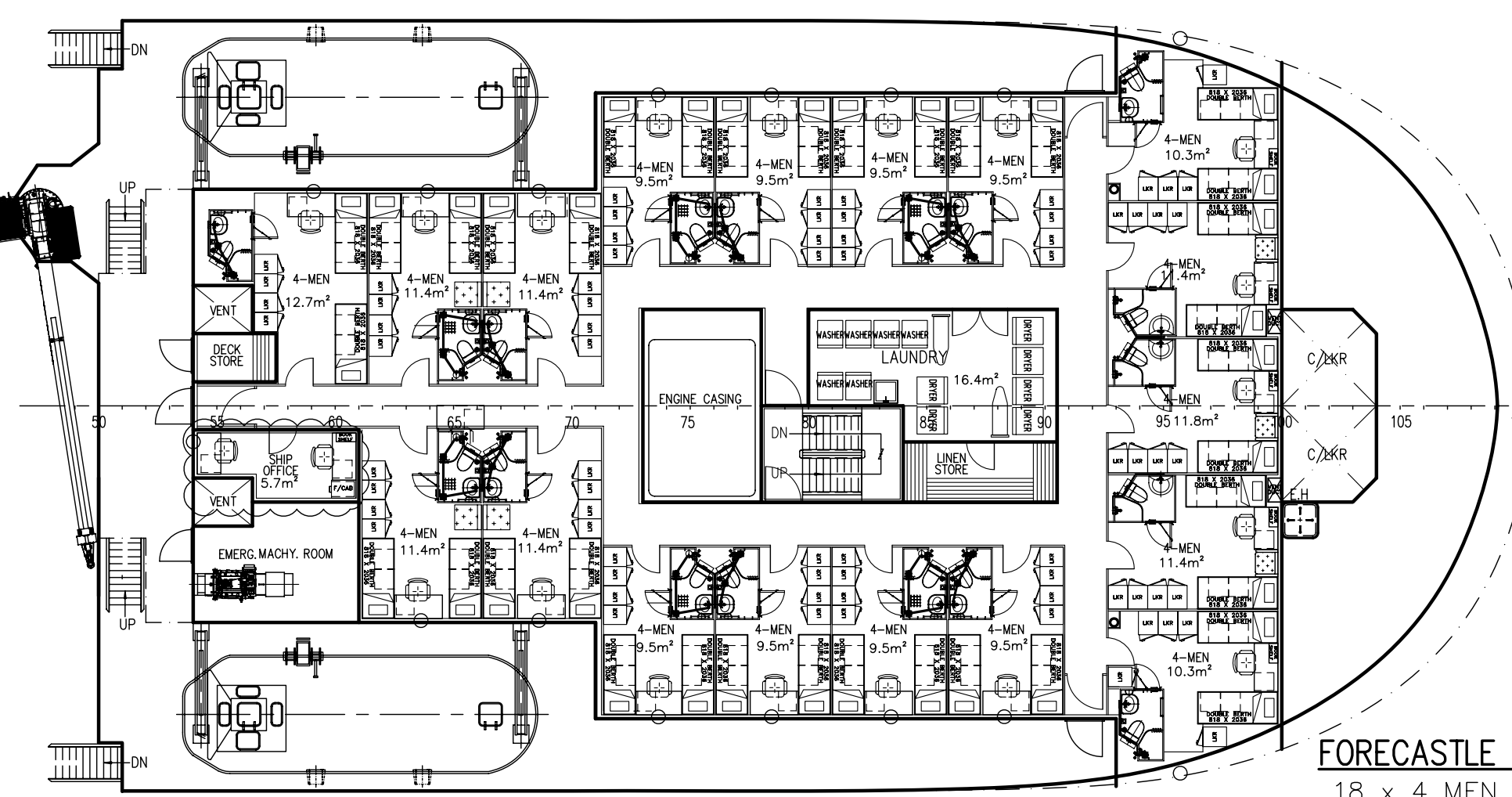
SEE LETTER  
NO.CPO/15/03437

PRINCIPAL DIMENSIONS

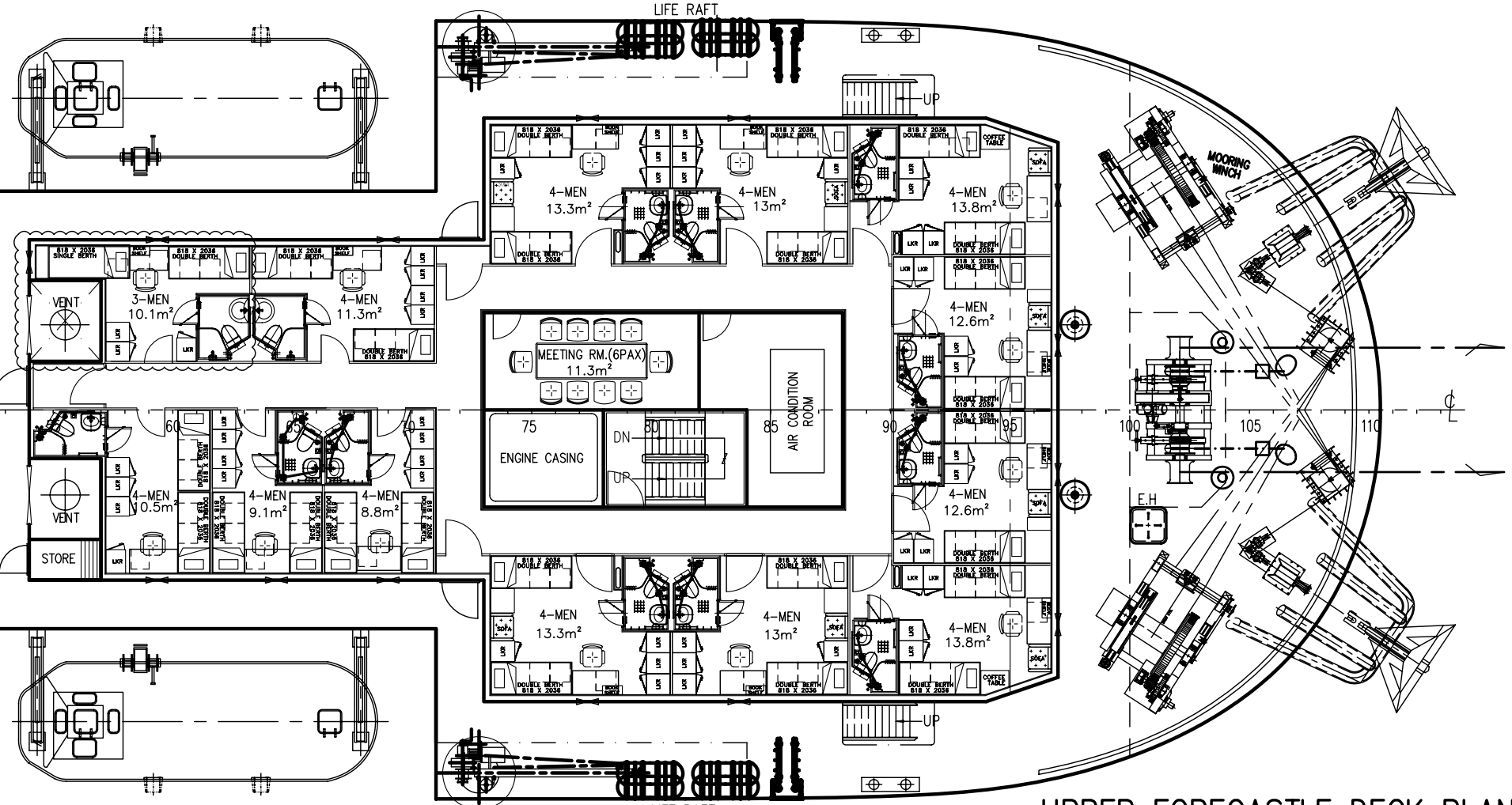
|  |                    |
|--|--------------------|
| LENGTH (O.A.)                                  | 70.50 M            |
| LENGTH (W.L.)                                  | 69.10 M            |
| LENGTH (B.P.)                                  | 64.90 M            |
| BEAM (MLD.)                                    | 19.52 M            |
| DEPTH (MLD.)                                   | 4.88 M             |
| DESIGN DRAFT                                   | 3.65 M             |
| FUEL OIL                                       | 575 M <sup>3</sup> |
| FRESH WATER                                    | 565 M <sup>3</sup> |
| DRILL WATER / W.B.                             | 565 M <sup>3</sup> |
| CLEAR DECK AREA                                | 550 M <sup>2</sup> |
| DECK CARGO (DECK LOADING=7.0T/M <sup>2</sup> ) | 500 TONS           |
| MAIN PROPULSION ENGINE                         | 2x2000 BHP         |
| SPEED (TRIALS)                                 | 12.5 KNOTS         |
| COMPLEMENT                                     | 193 MEN            |
| CREW   | 14 MEN             |
| SPECIAL PERSONEL                               | 179 MEN            |



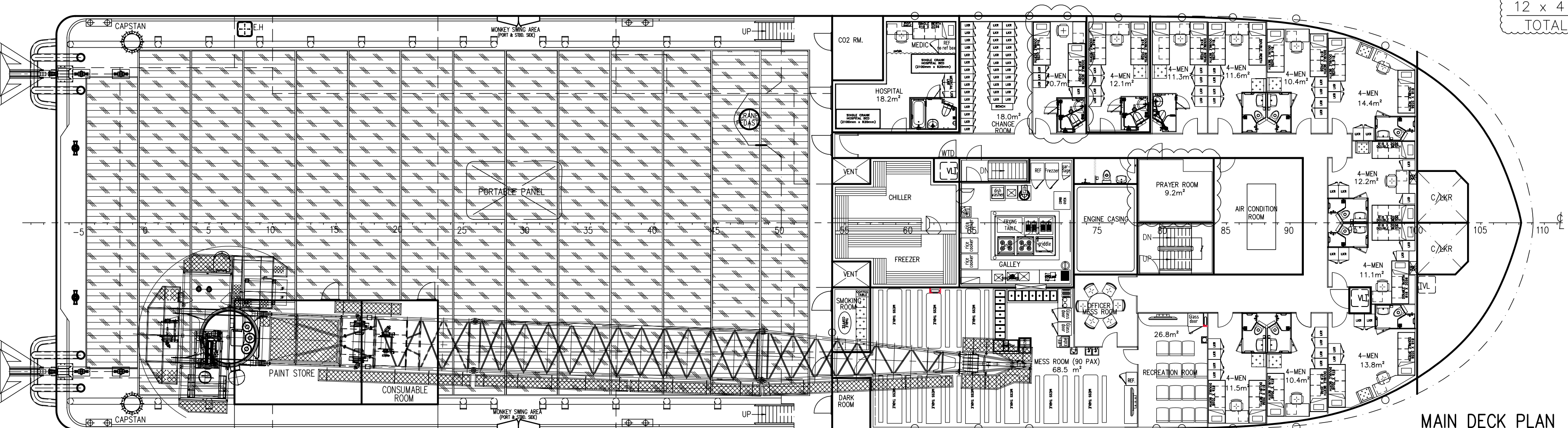
CREW 14 MEN  
SPECIAL PERSONEL 179 MEN



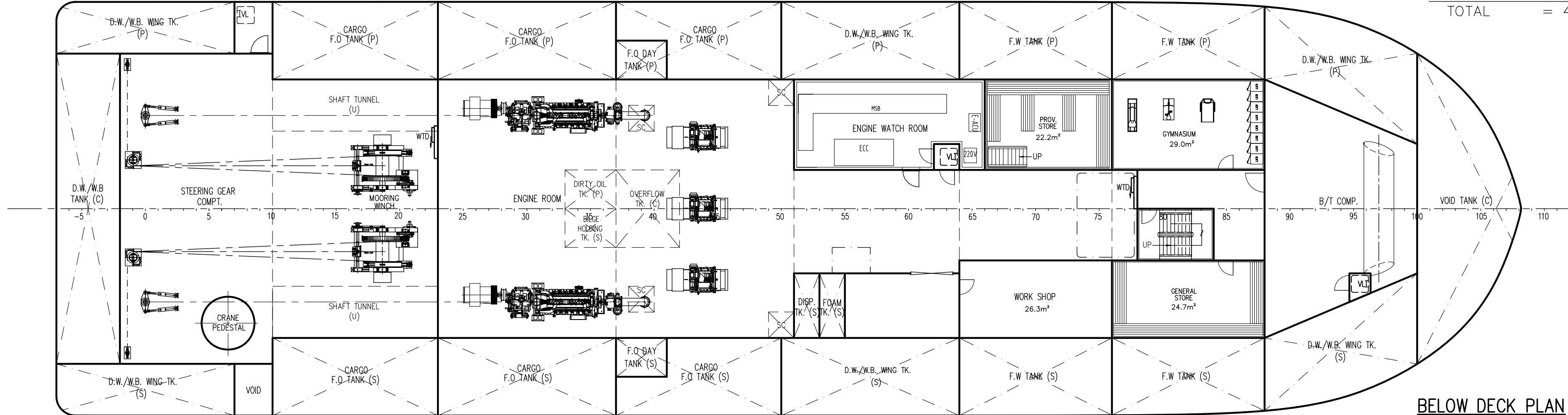
FORECASTLE DECK PLAN  
18 x 4 MEN = 72 MEN  
TOTAL = 72 MEN



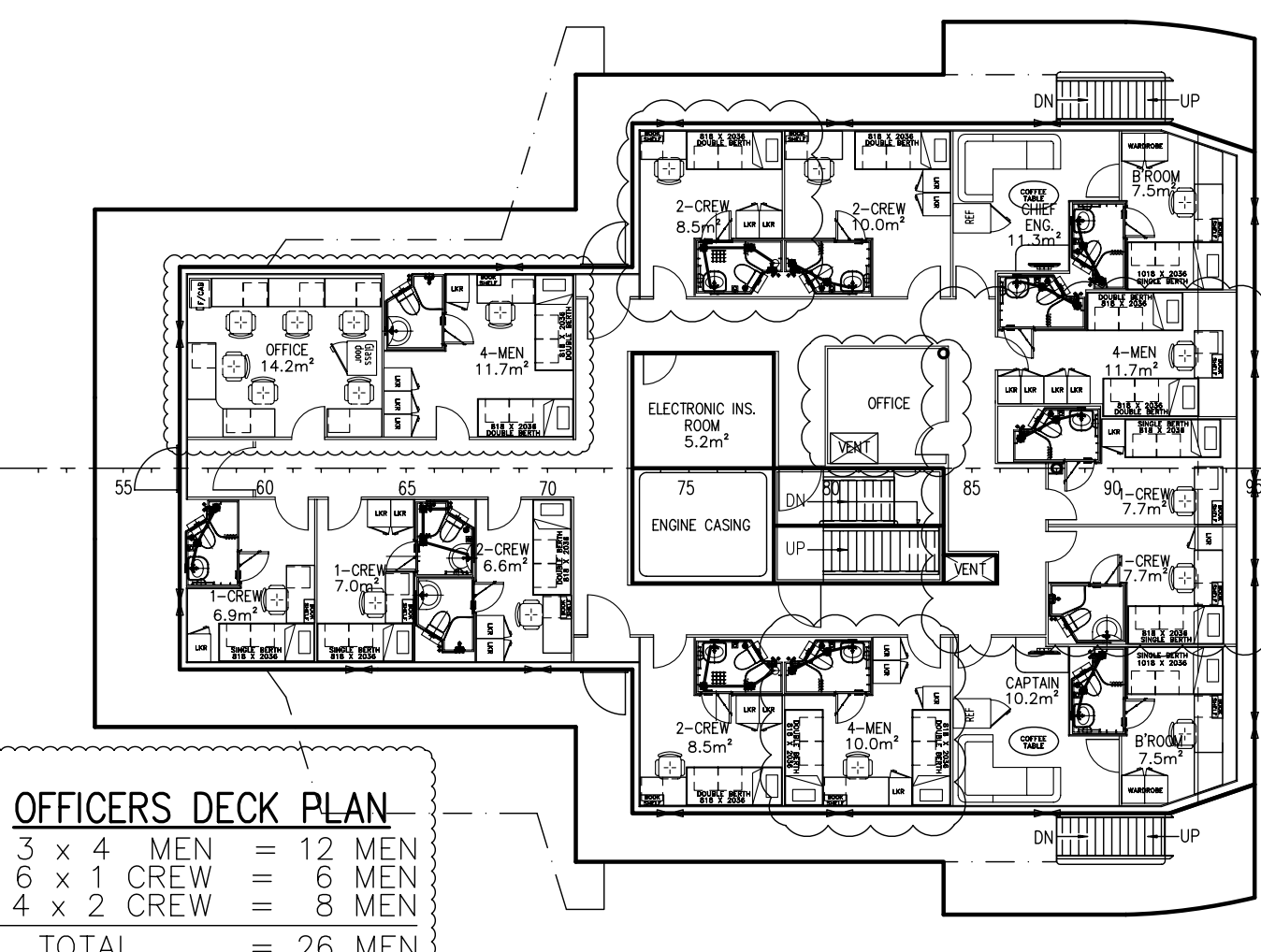
UPPER FORECASTLE DECK PLAN  
1 x 3 MEN = 3 MEN  
12 x 4 MEN = 48 MEN  
TOTAL = 51 MEN



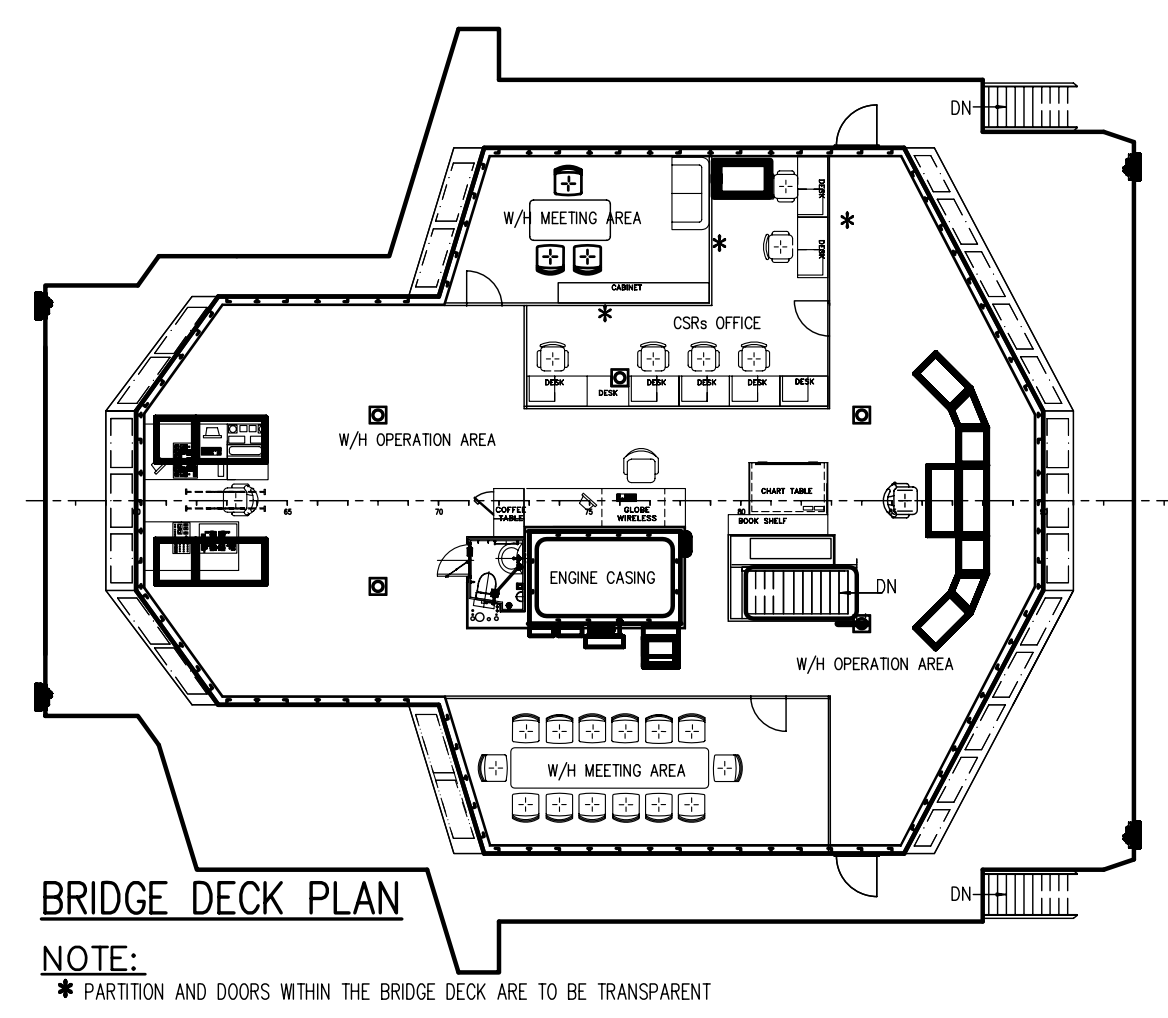
MAIN DECK PLAN  
11 x 4 MEN = 44 MEN  
TOTAL = 44 MEN



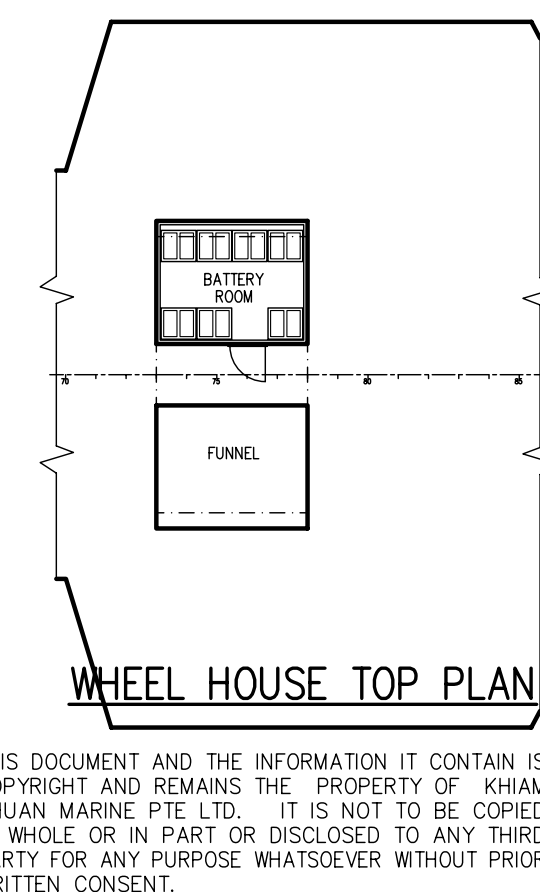
BELOW DECK PLAN



OFFICERS DECK PLAN  
3 x 4 MEN = 12 MEN  
6 x 1 CREW = 6 MEN  
4 x 2 CREW = 8 MEN  
TOTAL = 26 MEN



BRIDGE DECK PLAN  
NOTE:  
\* PARTITION AND DOORS WITHIN THE BRIDGE DECK ARE TO BE TRANSPARENT



WHEEL HOUSE TOP PLAN

|                |  |          |                |      |
|----------------|--|----------|----------------|------|
| 1              | COMPLEMENT AMENDED AS 193  | YUMINGYE | 10.07.15       |      |
| ITEM           | DETAILS OF MODIFICATION  | BY       | DATE           |      |
| CONSULTANT     | <br>31, BUKIT BATOK CRESCENT, #01-53, THE SPLENDOUR<br>SINGAPORE 658070. Tel+65-67753383 Fax+65-67753788<br>Email: khiamchuan@kcm.com.sg |          |                |      |
| PROJECT        | 70.5m MAINTENANCE/SUPPORT VESSEL   |          |                |      |
| TITLE          | GENERAL ARRANGEMENT  |          |                |      |
| CLASSIFICATION | HULL NO.   |          | KF7052         |      |
| DRAWN          | CHECKED  | SCALE    | DRAWING NUMBER | REV. |
| YUMINGYE       |  | 1:150    | KCM/Q715 - G1  | 1    |
| 29-6-2015      |  |          |                |      |

THIS DOCUMENT AND THE INFORMATION IT CONTAINS IS COPYRIGHT AND REMAINS THE PROPERTY OF KHIAM CHUAN MARINE PTE LTD. IT IS NOT TO BE COPIED IN WHOLE OR IN PART OR DISCLOSED TO ANY THIRD PARTY FOR ANY PURPOSE, WHATSOEVER WITHOUT PRIOR WRITTEN CONSENT.