

45 m / 2600 BHP / Maintenance Utility Vessel with Telescopic Crane



AOS VALOR



Atlantic Maritime Group FZE

www.atlanticnavigation.com

GENERAL PARTICULARS

Year of Build / Place	: 2018 / China
IMO Number	: 9818448
Call Sign	: HP9058
Flag / Port of Registry	: Panama / Panama
Class	: ABS
Notation	: ⚡ A1, Offshore Support Vessel, Supply, Ⓢ, ⚡ AMS CRC, MLC-ACCOM, RW, SPS, UWILD
GRT / NRT	: 1182 / 354
Vessel Manager	: Atlantic Maritime Group

DIMENSIONS

Length OA	: 45.00 m
Length BP	: 40.52 m
Breadth	: 14.20 m
Depth	: 4.50 m
Draft (Maximum)	: 3.50 m
Displacement @ Max. Draft	: 1293.36 T
Deadweight @ Max. Draft	: 337.36 T
Lightship	: 956 T

MACHINERY

Main Engine	: 2 x Caterpillar C32 @ 2100 RPM, V12 – 4 Stroke Total: 2600 BHP; 1939 kW; IMO-TII, Heavy Duty
Gear Box	: 2 x REINTJES GMBH-LAF 675L; 970 kW @ 2100 RPM
Main Generator (Engine) (Alternator)	: 2 x Cummins KTA19, 380 kW @ 1800 RPM : 2 x Leroy Somer, LSAM 47.2 M7 C6/4 475 kVA, 440V, 60 Hz
Shaft Generator M6	: 2 x Leroy Somer, 600 kW, 750 kVA; 60 Hz, LSAM49.3
Emergency Generator	: 1 x Cummins 6BT5.9-D (M); 90 kW, 440 V, 60 Hz
Steering Gear	: 2 x Jastram; Electro Hydraulic; Independent Type
Propellers (Kort Nozzle)	: 2 x CPP, CAT-MPP 490, 4 Blades, Twin Screw, 280 RPM
Rudders	: 2 x High Lift Flap Spade Type
Bow Thruster	: 1 x CAT-MTT 113 CL-02, 400 kW @ 1800 RPM 6 T Thrust; 4 Bladed; CPP
Sewage Treatment Plant	: 1 x WCMBR – 40(U); Cap. 40 PAX – 5 m ³ / hr @ 3 Bar
Fresh Water Generator	: 1 x Type – HSRO-08B; Capacity - 8 T / Day
Starting Air Compressor	: 2 x SPERRE; 32 m ³ / hr @ 30 Bar
Maintenance Air Compressor	: 2 x RENNER RSF-132 / 22230 lit / min @ 8.50 Bar
Compressed Air Dryer	: 1 x Buran Donaldson; 1175 m ³ / hr @ 1.60 Mpa
Fuel Oil Purifier	: 1 x Alfa Laval; 900 L / Hr (MDO @ 13 cst @ 40 Deg C)
Oily Water Separator	: 1 x OWS YSZ1.0; Separating Capacity – 1 m ³ / hr
Search Lights	: 2 x 2000 W & 2 x 1000 W
Fixed Gas Detection System	: 5 x H2S & 5 x LEL

CAPACITIES & PERFORMANCE

Fresh Water Tank	: 161.40 m ³
Fuel Oil Tank	: 352.60 m ³
Drill / Ballast Water Tank	: 251.30 m ³
Lube Oil Tank	: 11.60 m ³
Sewage Holding Tank	: 10.70 m ³
Dirty Oil Tank	: 10.30 m ³
Bilge Holding Tank	: 10.30 m ³
Overflow Tank	: 8.00 m ³
Fresh Water Cargo Pump	: 1 x 90 m ³ / hr @ 30 m Head
Fuel Oil Cargo Pump	: 1 x 92 m ³ / hr @ 38 m Head
Bilge Pump	: 2 x 35 m ³ / hr @ 25 m Head
Daily Bilge Pump	: 1 x 2 m ³ / hr @ 25 m Head
Dirty Oil / Sludge Pump	: 1 x 5 m ³ / hr @ 45 m Head
Deck Cargo Space	: 200 m ²
Design Deck Load	: 5.0 T / m ²
Deck Cargo Capacity	: 85 T @ 10 Days Endurance 45 T @ 15 Days Endurance
Speed	: 12.4 knots @ 100 % MCR 12.0 Knots @ 85 % CSR
Fuel Consumption	: 11.80 m ³ / day @ 100 % MCR 11.00 m ³ / day @ 85 % CSR

NAVIGATION & COMMUNICATION EQUIPMENT

Fixed VHF	: 2 x Furuno – FM – 8900S
GMDSS (A1+A2+A3)	: Furuno FS-2575C
Radar	: 1 x Furuno; MU-190, X Band
Radar	: 1 x Furuno; MU-190, S Band
GPS	: 2 x Furuno, GP-170
Echo Sounder	: 1 x Furuno; FE-800
Navtex	: 1 x Furuno; NX-700A
Auto-Pilot	: 1 x Anschutz; NP 60
Gyro Compass	: 2 x Anschutz; Standard 22
Magnetic Compass	: 1 x Cassens and Plath GmbH
Inmarsat-C	: 1 x Furuno; Felcom 18
SSB Transceiver	: 1 x Furuno; FS-2575
Speed Log	: 1 x Furuno; DS-60
SART	: 2 x Ocean Signal; S100
EPIRB	: 1 x Ocean Signal; E100
AIS	: 1 x Furuno; FA-170
Portable GMDSS VHF	: 3 x Icom; IC-GM1600 E
Weather Fax	: 1 x Furuno; FAX-408
Portable VHF	: 2 x Motorola GP328; 2 x Standard Horizon HX400
BNWAS	: 1 x Furuno BR 510
Chart Plotter	: 1 x Garmin GPS MAP 7412
Satcom	: V – Sat (High Speed Internet)
Satellite TV	: OSN

Vessel Equipped with Collapsible Mast

SPECIFICATIONS ARE NOT CONTRACTUAL AND SUBJECTED TO CHANGE WITHOUT NOTICE

A SUBSIDIARY OF ATLANTIC NAVIGATION HOLDING (S)

Revision 02.2022

45 m / 2600 BHP / Maintenance Utility Vessel with Telescopic Crane

FIRE FIGHTING & SAFETY EQUIPMENT

Bilge / Ballast / Fire / GS Pump	: 2 x 80 m ³ / hr @ 60 m Head
Emergency Fire Pump	: 1 x 35 m ³ / hr @ 50 m Head
Fixed CO2 System	: Engine Room, Paint Locker, Galley & Exhaust Casing
Rescue Boat & Davit	: 1 x 6 Pax (Open Type) & 20 kN Single Arm Davit
Life Rafts	: 6 x 20 Pax (Inflatable – Throw Type)
Life Buoys	: 8 Nos
Fire Hydrant	: DN40 x 12 Nos & DN50 x 2 Nos
Life Jackets	: 38 Nos

GALLEY & LAUNDRY

Electric Cooking Range	: 1 x 4 Hot Plates
Chiller & Freezer	: 15.0 m ³ & 14.3 m ³ ; 1 Month for Full POB
Refrigerator	: 1 x 300 Liters
Electric Water Boiler	: 2 x 30 Liters
Washing Machine	: 3 x 10 Kg
Dryer	: 3 x 10 Kg
Iron	: 1 with Ironing Table

ACCOMMODATION

1 Man Cabin	: 4 Nos
2 Man Cabin	: 15 Nos
Total	: 34 Person
Hospital	: 1 No. with 1 Bed
Mess Room	: 1 No. with 34 Persons capacity in Single Seating

All Cabins Fully Air Conditioned

DECK MACHINERY & EQUIPMENT

Deck Crane	: 1 x MacGregor; Electro Hydraulic; Telescopic Crane SWL - 20 MT @ 4 m & SWL - 4 MT @ 20 m Minimum Outreach – 4 m Maximum Outreach – 30 m Personnel Lifting – 0.3 T @ All Radius
Anchor Windlass/Mooring Winch	: 1 x MacGregor; Hydraulic Operated Winch Drum Capacity 180m x 44mm Dia. PP Rope Rated Pull – 4 T @ 15 m / min (1 st Layer) Brake Holding – 15 T (1 st Layer) Double Gypsies with Double Warping Ends Windlass – 5 T @ 9 m / min; Brake Holding – 33.8 T
Anchor chain	: Total of 660 m x 30 mm Diameter U3 Chain
Anchor	: 2 x 1193 kg; High Holding Type
Tugger Winch	: 2 x MacGregor; Hydraulic Driven; Rated Pull – 5 T Each @ 10 m / min (1 st Layer) Brake Holding – 7.5 T (1 st Layer)
Vertical Capstan	: 2 x 5 T @ 15 m / min; Warping Head – 400 mm

ELECTRICAL SUPPLY & SOCKETS ON MAIN DECK

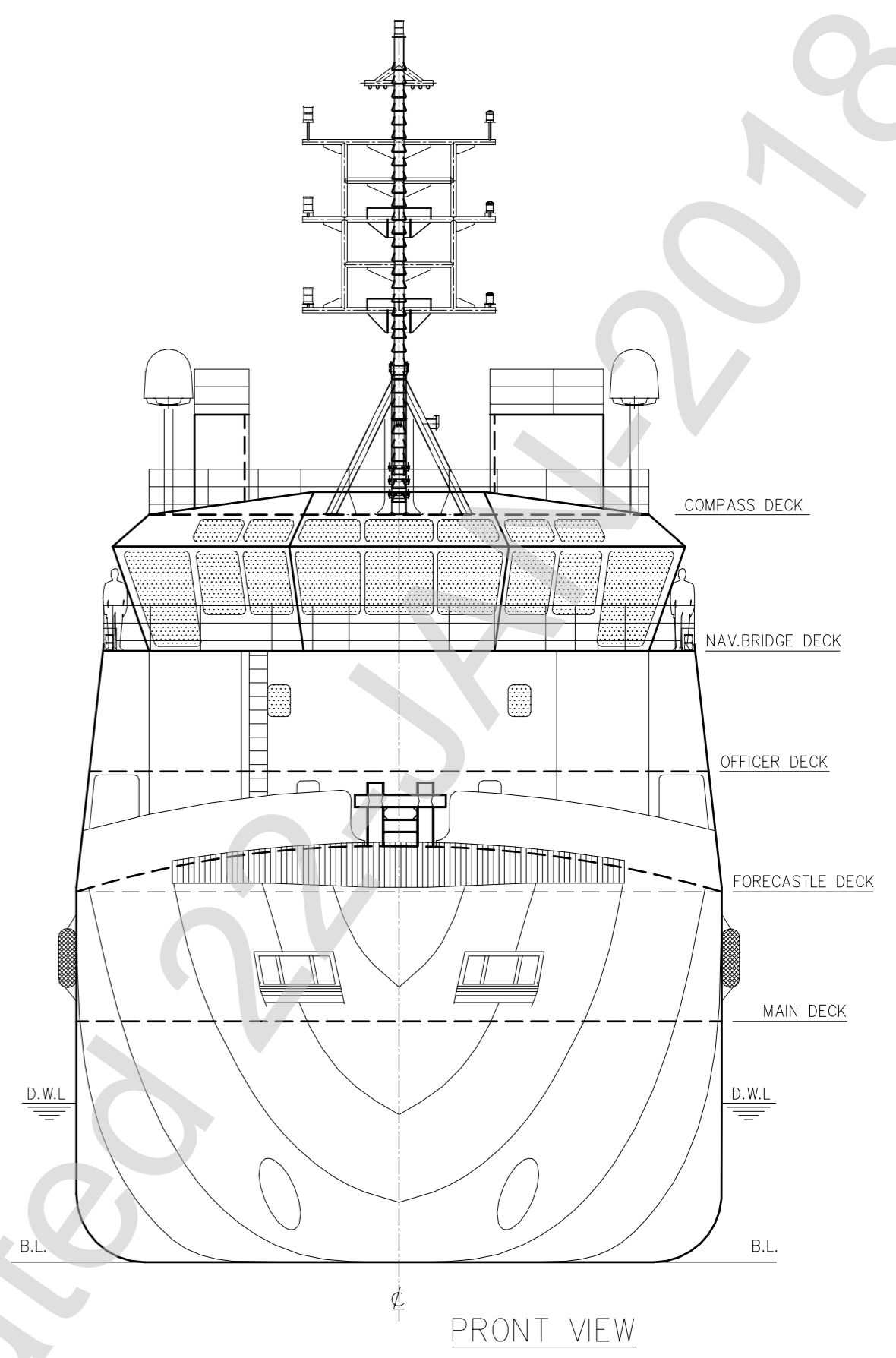
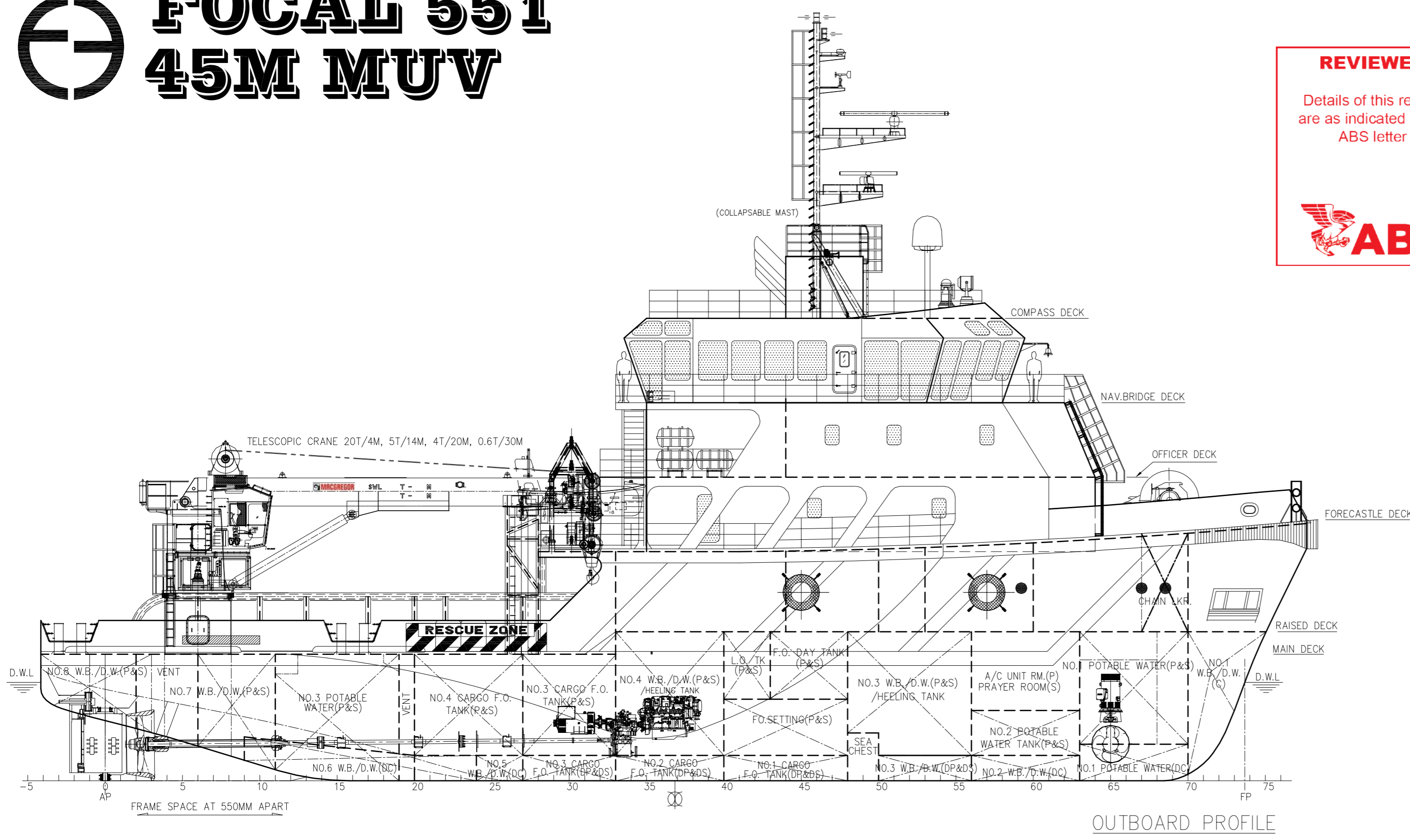
Power Supply Sockets	: 7 x 440 V @ 80 Amps (Explosion Proof Sockets) : 6 x 220 V @ 60 Amps (Explosion Proof Sockets) : 4 x 220 V @ 25 Amps (Explosion Proof Sockets) : 6 x 110 V @ 30 Amps (Explosion Proof Sockets)
Reefer Sockets	: 2 x 440 V @ 50 Amps : 2 x 220 V @ 60 Amps



FOCAL 551 45M MUV

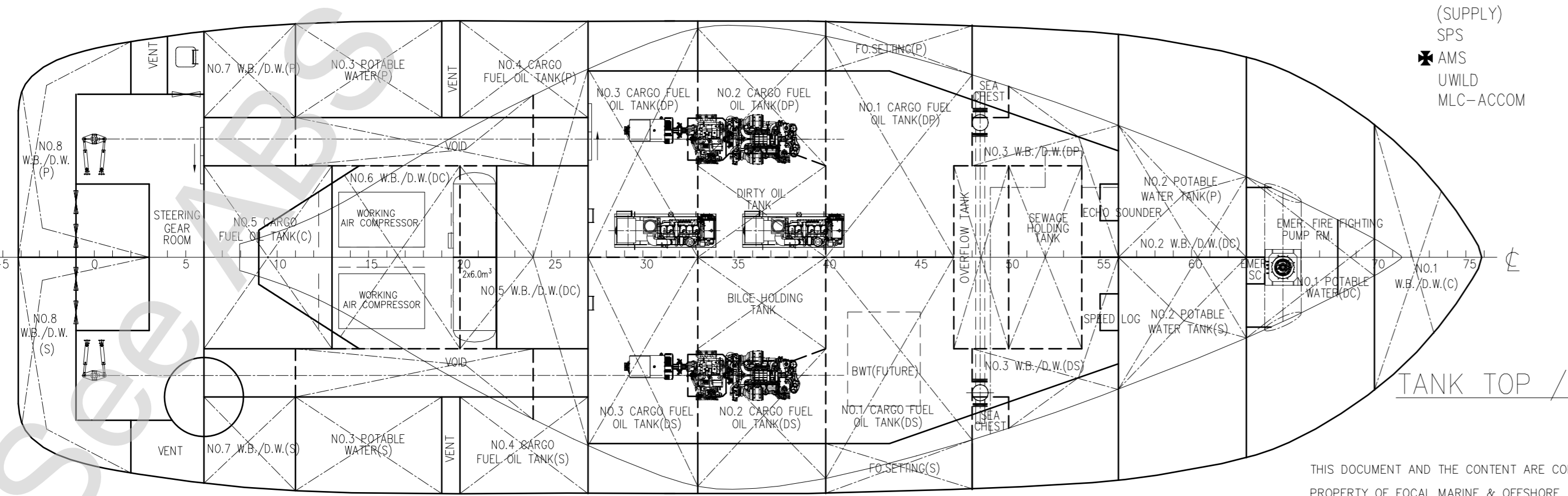
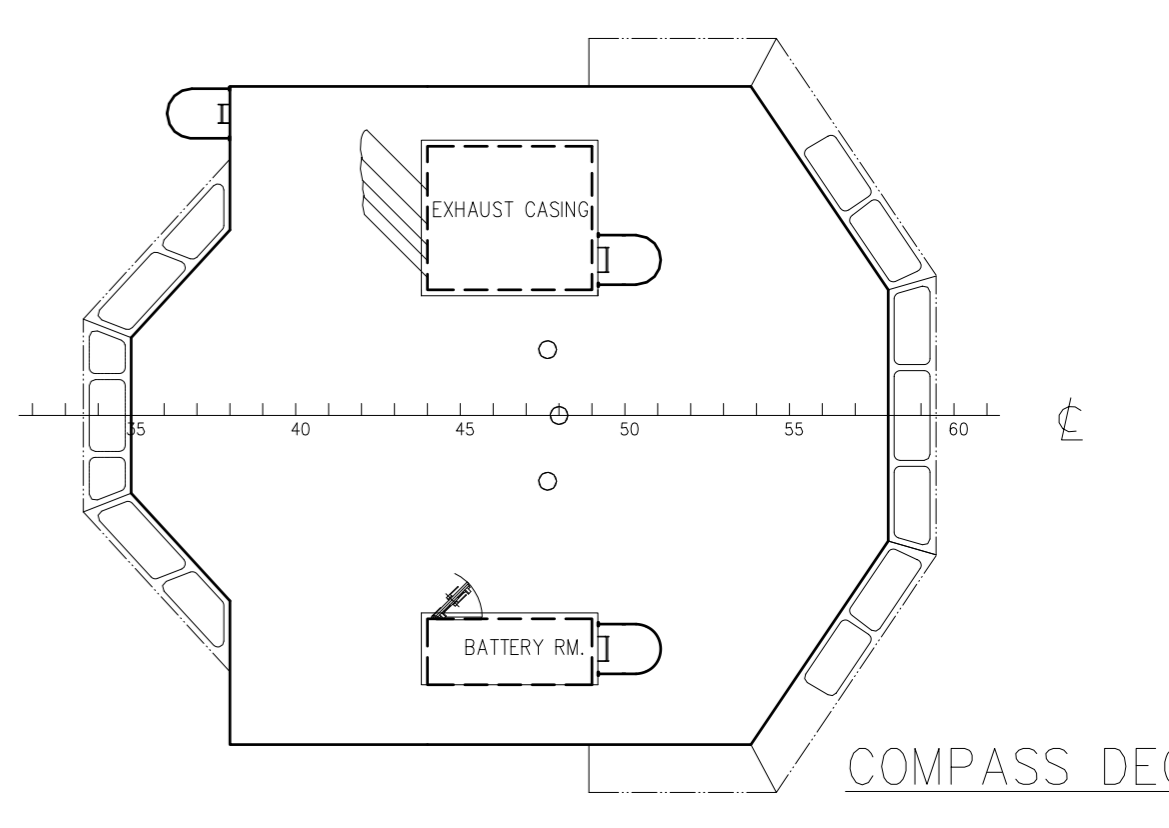
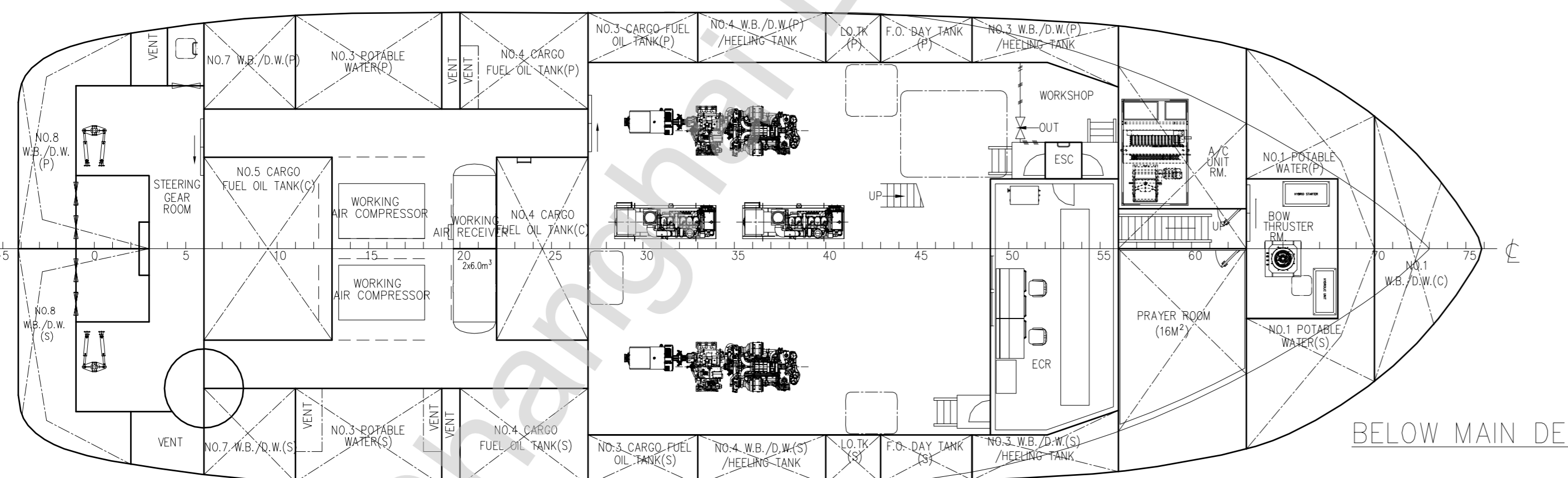
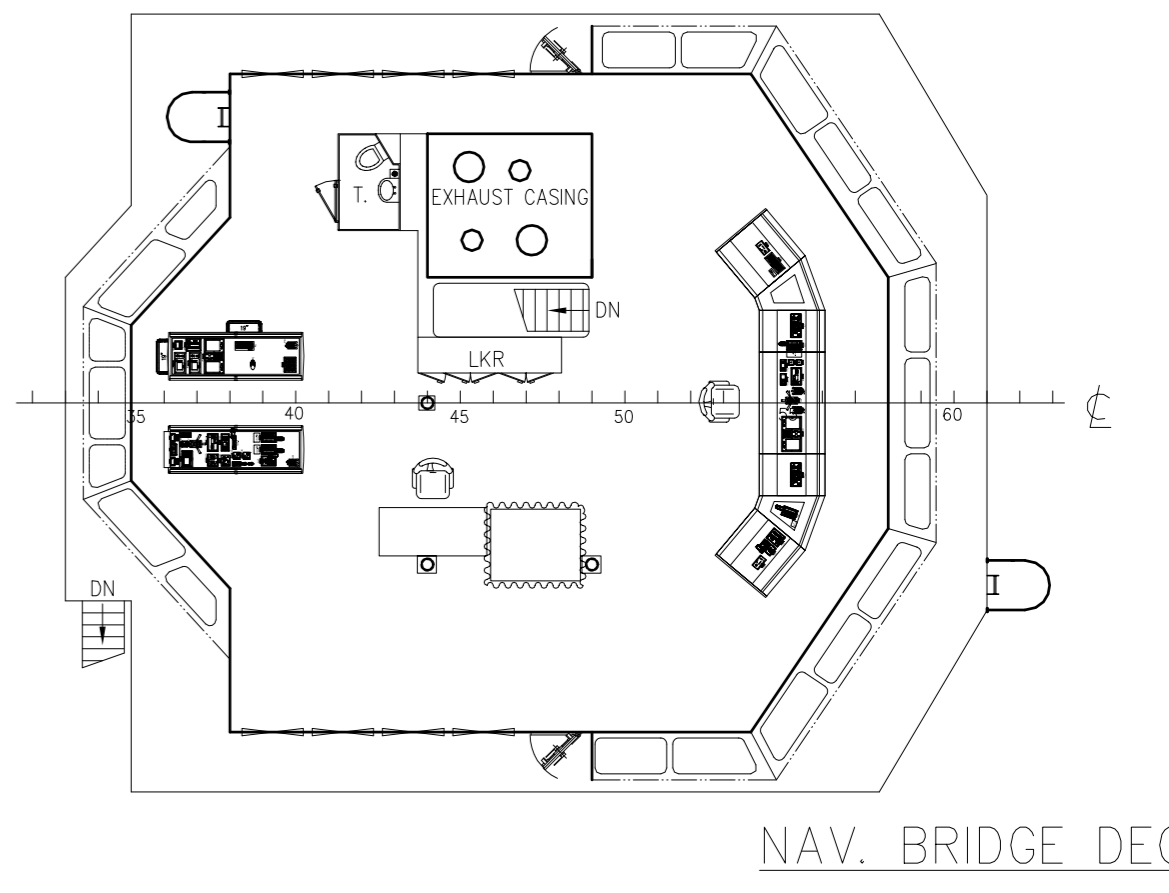
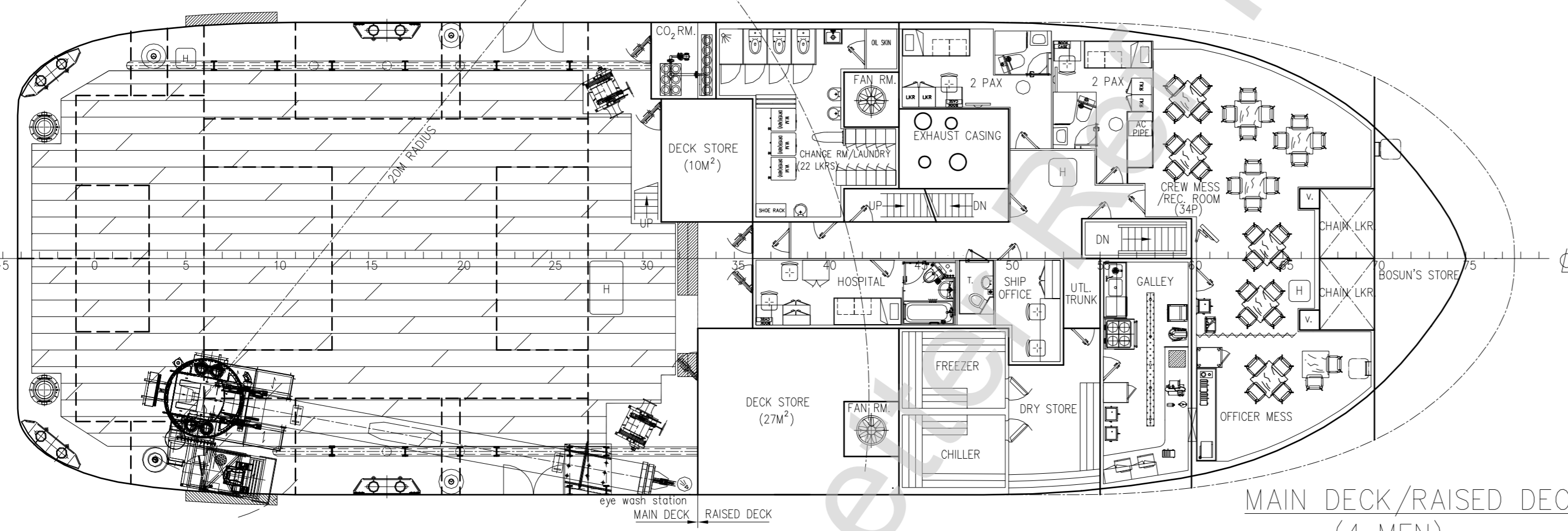
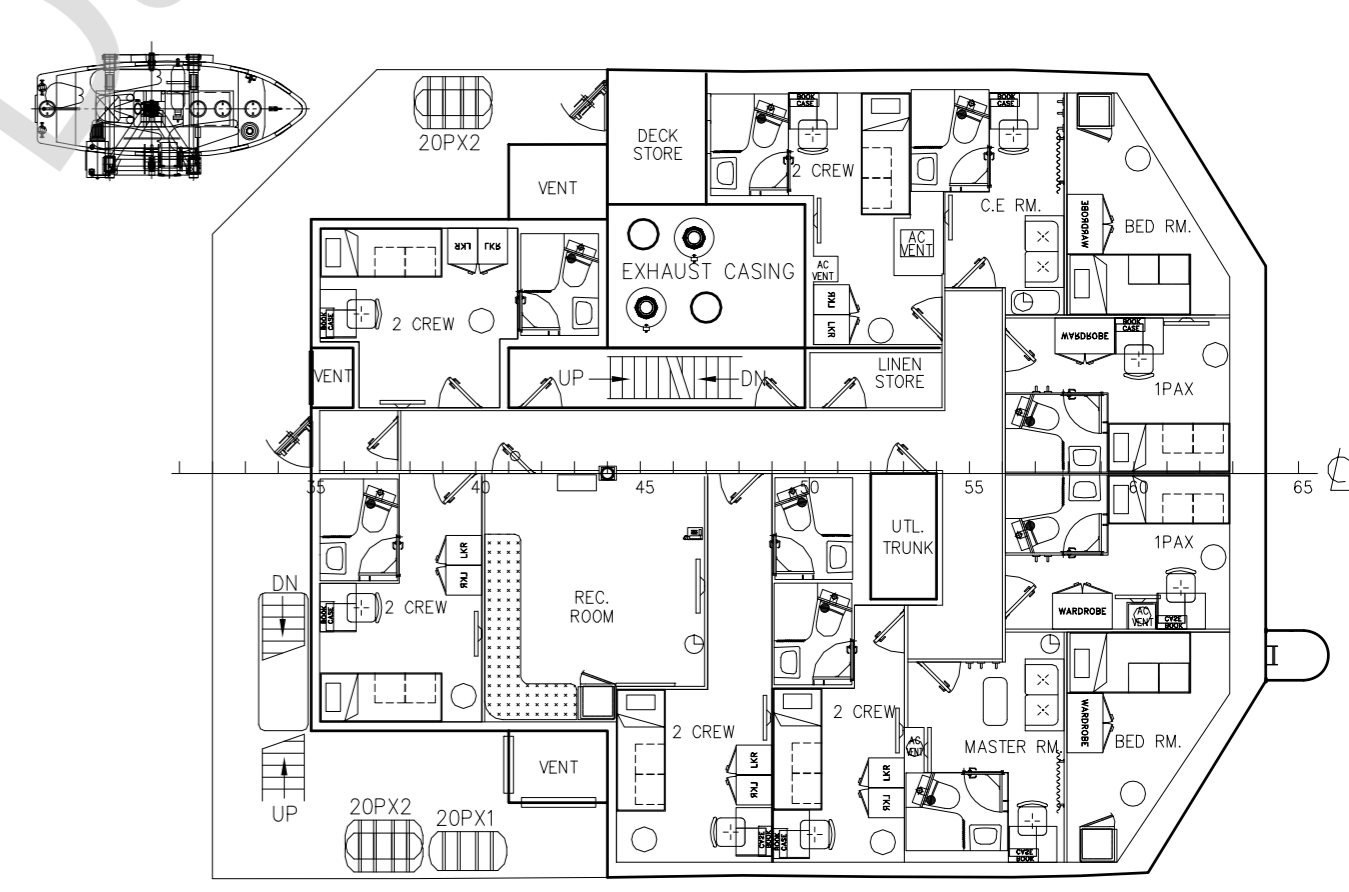
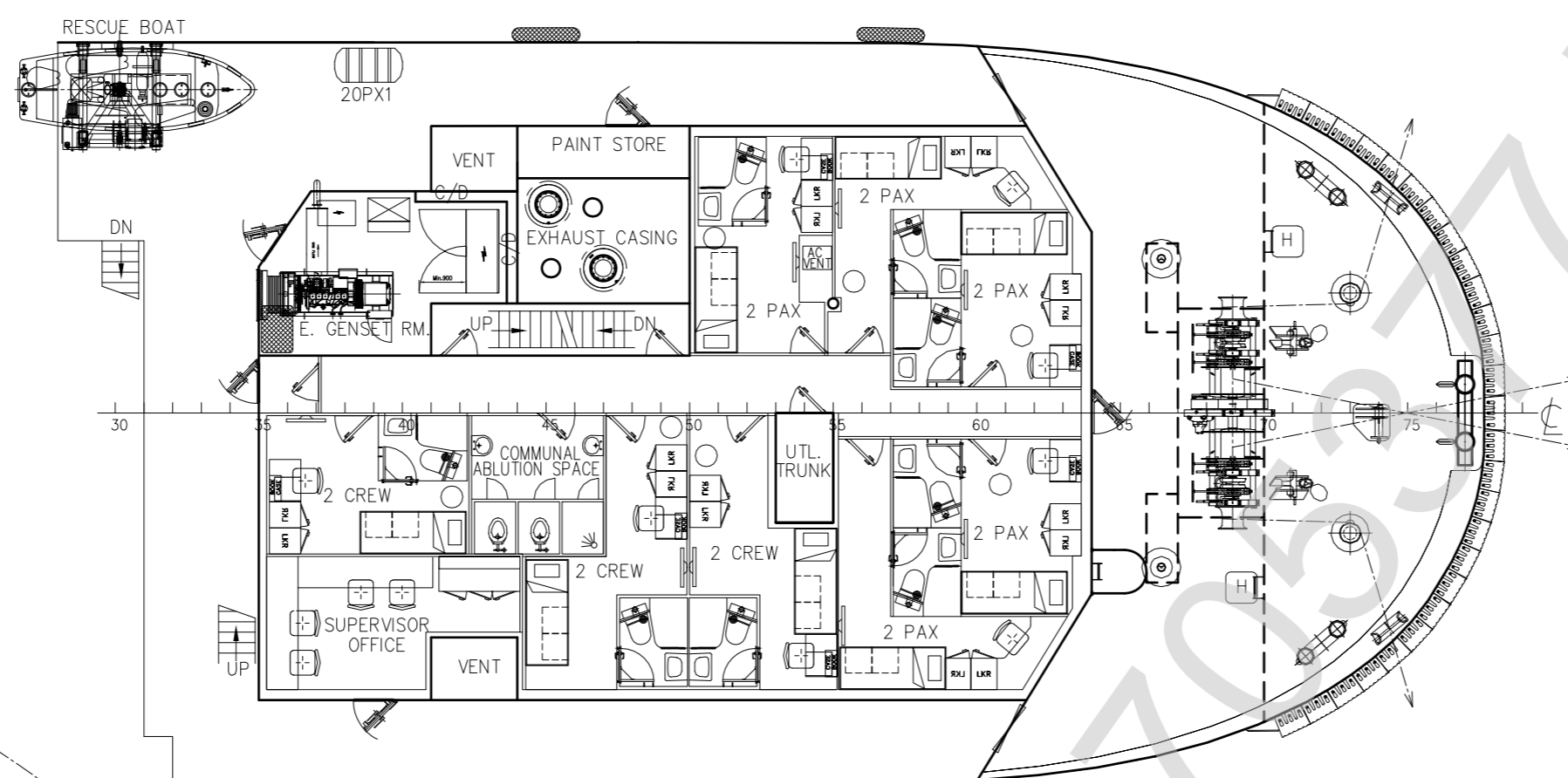
REVIEWED

Details of this review
are as indicated in the
ABS letter



PRINCIPAL PARTICULARS & CAPACITIES

LENGTH OA	45.00M
LENGTH BP	40.52M
BEAM MLD.	14.20M
DEPTH MLD.	4.50M
DRAFT SCANTLING	3.50M
DRAFT DESIGNED	3.20M
COMPLEMENT	34 MEN
MAIN ENGINE	2 x 1,300 BHP
DECK LOADING	5T/M ²
TRIAL SPEED	10.5 KTS
CARGO DECK AREA	200 M ²
FUEL OIL	350 M ³
W.B./D.W.	250 M ³
POTABLE WATER	160 M ³

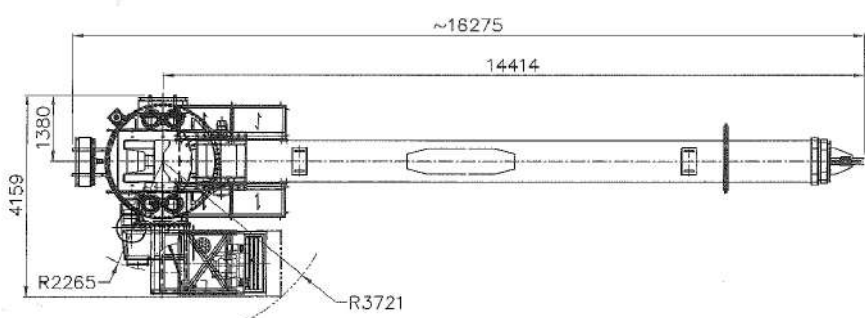


CLASS: ABS **A1** OFFSHORE SUPPORT VESSEL (SUPPLY)
SPS
AMS
UWILD
MLC-ACCUM

THIS DOCUMENT AND THE CONTENT ARE COPYRIGHT AND REMAIN PROPERTY OF FOCAL MARINE & OFFSHORE. THEY MUST NOT BE COPIED IN WHOLE OR IN PART TO ANY THIRD PARTY FOR ANY PURPOSE WITHOUT PRIOR WRITTEN PERMISSION FROM FOCAL MARINE & OFFSHORE. THE RECEIPT OF THIS DOCUMENT IMPLIES ACCEPTANCE OF THIS CONDITION.

9	AMENDED AS BUILT ON SITE	ZF	DEC-28-2017
8	AMENDED AS DESIGN PROGRESS	YP	SEP-30-2016
REV NO.	REVISION DESCRIPTION	BY	DATE
OWNER	ATLANTIC MARITIME GROUP FZE		
BUILDER	WUCHANG SHIPBUILDING INDUSTRY CO., LTD HULL NO.: BG0012A09M/BG0013A09M/BG0014A09M/BG0015A09M		
PROJECT	45M MAINTENANCE / UTILITY VESSEL "FOCAL 551"		
APPROVE	DWG TITLE:	JOB NO.: P-1919	
VERIFY	GENERAL	DWG NO.: P-1919-001	
CHECKER	ARRANGEMENT	SCALE: 1:125 (A1)	
DRAWER	YP	CLASS: ABS	
FOCAL MARINE & OFFSHORE EMAIL: info@focmarine.com SHANGHAI TEL: 86-21-58705786 SINGAPORE TEL: 65-68481387 FAX: 86-21-50313265 SINGAPORE TEL: 65-68481291			

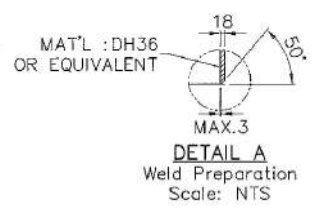
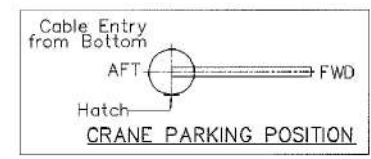
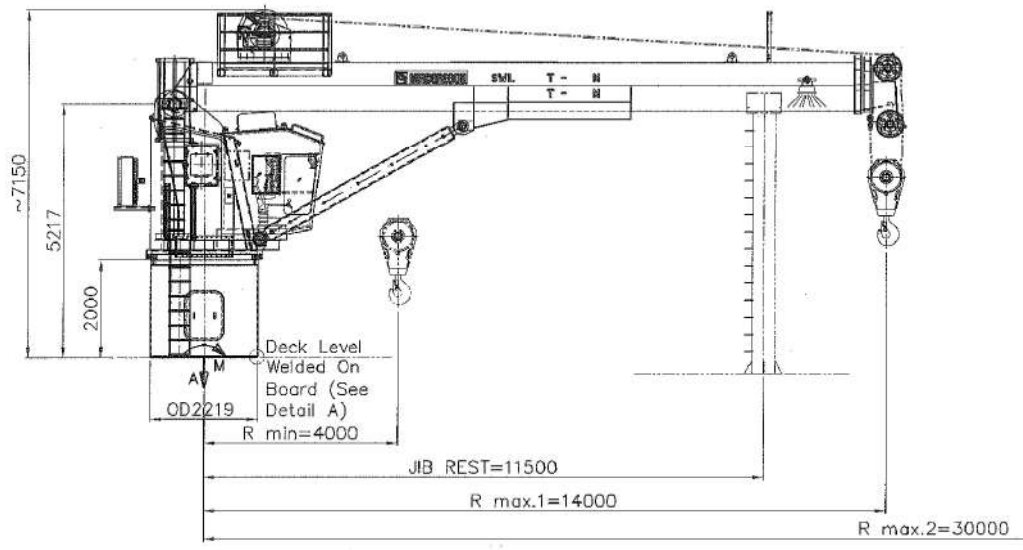
1 2 3 4 5 6 7 8



SPECIFICATION

	TELE. JIB FULLY RETRACTED	TELE. JIB EXTENDED
SWL	: 20 T / 5 T	: 4 T / 0.6 T
MAX. OUTREACH	: 4 M / 14 M	: 20 M / 30 M
MIN. OUTREACH	: 4 M	
PERSONNEL LIFTING	: 0.3 T @ ALL RADIUS	
HOOK SPEED	: 0-20 M/MIN	
HOOK TRAVEL	: 50 M	
SLEWING SPEED	: 0-0.5 RPM	
SLEWING SECTOR	: TBA (<360DEG)	
	(SLEW LIMIT SWITCH PROVIDED)	
LUFFING TIME	: 120 SEC	
TELESCOPIC TIME	: 180 SEC	
POWER PACK	: BUILT-IN	
AREA CLASSIFICATION	: SAFE ZONE (SEE NOTE 3)	
COLOR	: RAL 9010 WHITE	
FORCES TO SHIPDECK:		

MAX. MOMENTS GIVEN ARE INCL. DYN. FACTOR & PEDESTAL FACTOR OF 1.5	
TRIM/LIST = 2°/5°	
WIND SPEED = 18 m/s	
WAVE HEIGHT = 0.6 m	
TELE. JIB FULLY RETRACTED	EXTENDED
M (Overturning) = 628.7 Tm	M (Overturning) = 731.0 Tm
A (Axial Load) = 89.4 T	A (Axial Load) = 51.7 T



(NOTES)

1. ALL DIMENSIONS ARE IN MILIMETERS UNLESS OTHERWISE STATED.
2. THIS CRANE IS DESIGNED IN ACCORDANCE WITH API 2C, 7th EDITION.
3. ALL ELECTRICAL COMPONENTS ON THE CRANE BOOM AND BLOCK SHALL BE RATED FOR OPERATION IN ZONE 1.

REV	DATE	DESCRIPTION	DRAWN	CHK'D	APPR'D
C2	11.01.17	RE-ISSUED FOR CONSTRUCTION(D004/2K17)	CZJ		
C1	21.12.16	RE-ISSUED FOR CONSTRUCTION(D0235/2K16)	CWC	CZJ	XF
C	15.11.16	ISSUED FOR CONSTRUCTION	CWC	CZJ	XF
B2	07.10.16	RE-ISSUED FOR APPROVAL	CWC	CZJ	XF
B1	29.08.16	RE-ISSUED FOR APPROVAL	CWC	CZJ	XF
B	03.08.16	ISSUED FOR APPROVAL	CWC	CZJ	XF
A	-	-	-	-	-

© MACGREGOR PTE. LTD.
OFFSHORE DECK MACHINERY
(REGISTRATION NUMBER 2073116330)

ADDRESS : No.15 TUKANG INNOVATION DRIVE SINGAPORE 618299
TEL: (65) 65973888 FAX: (65) 65973513

ALL INFORMATION CONTAINED ON THIS DRAWING IS CONFIDENTIAL AND CANNOT BE USED OR DIVULGED TO A THIRD PARTY WITHOUT PERMISSION.

GENERAL TOLERANCES: ACCORDING TO ISO 2768							
RANGE	0.5-3	OVER 3-6	OVER 6-30	OVER 30-120	OVER 120-400	OVER 400-1000	OVER 1000-4000
M/C	±0.1	±0.1	±0.2	±0.3	±0.5	±0.8	±1.2
UN M/C	±0.2	±0.3	±0.5	±0.8	±1.2	±2	±3
RANGE	UP TO 10	OVER 10-50	OVER 50-120	OVER 120-400	OVER 400		
M/C	±1°	±0°30'	±0°20'	±0°10'	±0°5'		
UN M/C	±1°30'	±1°	±0°30'	±0°15'	±0°10'		

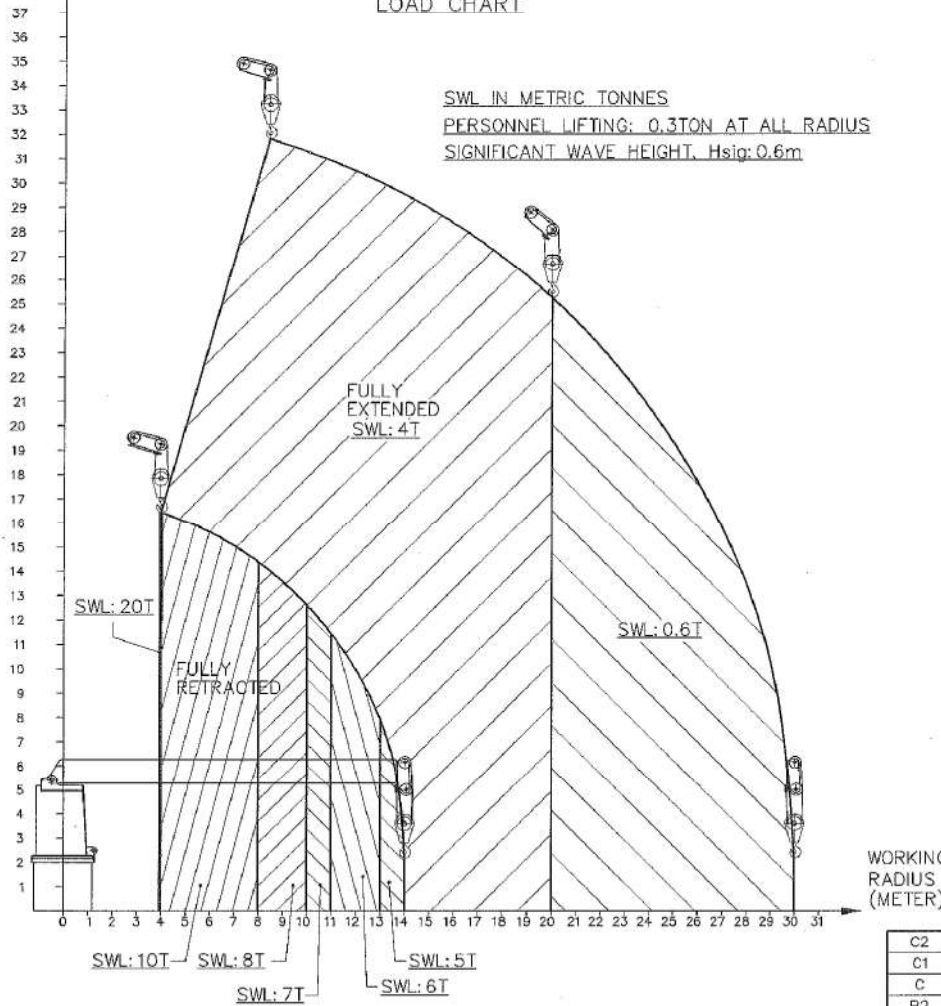
TITLE :			
HYDRAULIC OFFSHORE TELESCOPIC CRANE GENERAL ARRANGEMENT			
ALL DIMENSIONS IN MM UNLESS OTHERWISE STATED	SCALE 1 : 110	EST. WT. : ~42 TON	
MODEL NO: MG-OTC2201-2004-0420-0230E(WR01)	DWG NO: F0309-12-OTC2201-2004-0420-0230E(WR01)	SHT. 1/2	



LIFTING HEIGHT
(METER)

LOAD CHART

SWL IN METRIC TONNES
PERSONNEL LIFTING: 0.3TON AT ALL RADIUS
SIGNIFICANT WAVE HEIGHT, Hsig:0.6m



WORKING
RADIUS
(METER)

REV	DATE	DESCRIPTION	DRAWN	CHK'D	APPR'D
C2	11.01.17	RE-ISSUED FOR CONSTRUCTION(D004/2K17)	CZJ	<i>Am</i>	<i>AB</i>
C1	21.12.16	RE-ISSUED FOR CONSTRUCTION(D0235/2K16)	CWC	CZJ	XF
C	15.11.16	ISSUED FOR CONSTRUCTION	CWC	CZJ	XF
B2	07.10.16	RE-ISSUED FOR APPROVAL	CWC	CZJ	XF
B1	29.08.16	RE-ISSUED FOR APPROVAL	CWC	CZJ	XF
B	03.08.16	ISSUED FOR APPROVAL	CWC	CZJ	XF
A	-	-	-	-	-

TITLE :

HYDRAULIC OFFSHORE TELESCOPIC CRANE
GENERAL ARRANGEMENT

	ALL DIMENSIONS IN MM UNLESS OTHERWISE STATED	SCALE 1 : 110	EST. WT.: - TON
MODEL NO: MG-DTC2201-2004-0420-0230JE(MR01)		DWG NO: F0309-12-DTC2201-2004-0420-0230JE(MR01)-0	SHT. 2/2

© MACGREGOR PTE. LTD.
OFFSHORE DECK MACHINERY
(REGISTRATION NUMBER 2013116330)

ADDRESS : No.15 TUKANG INNOVATION DRIVE SINGAPORE 618299
TEL: (65) 65973888 FAX: (65) 65973513

ALL INFORMATION CONTAINED ON THIS DRAWING IS CONFIDENTIAL AND
CANNOT BE USED OR DIVULGED TO A THIRD PARTY WITHOUT PERMISSION.

GENERAL TOLERANCES: ACCORDING TO ISO 2768

RANGE	0.5-3	OVER 3-8	OVER 8-30	OVER 30-120	OVER 120-400	OVER 400-1000	OVER 1000-2000	OVER 2000-4000
M/C	±0.1	±0.1	±0.2	±0.3	±0.5	±0.8	±1.2	±2
UN M/C	±0.2	±0.3	±0.5	±0.8	±1.2	±2	±3	±4

RANGE	UP TO 10	OVER 10-50	OVER 50-120	OVER 120-400	OVER 400
M/C	±1'	±0'30"	±0'20"	±0'10"	±0'5"
UN M/C	±1'30"	±1'	±0'30"	±0'15"	±0'10"

