



AOS EMERALD



Atlantic Maritime Group FZE

www.atlanticnavigation.com

GENERAL PARTICULARS

| | |
|-------------------------|--|
| Year of Build / Place | : 2018 / China |
| IMO Number | : 9818474 |
| Call Sign | : 3EKN6 |
| Flag / Port of Registry | : Panama / Panama |
| Class | : ABS |
| Notation | : ⚡ A1, AH, FFV 1, OSR – C2, Offshore Support Vessel, Supply – HNLS, TOW, (E), ⚡ AMS |
| GRT / NRT | : 1835 / 550 |
| Vessel Manager | : Atlantic Maritime Group |

DIMENSIONS

| | |
|----------------------------|----------------|
| Length OA | : 58.00 m |
| Length BP | : 52.75 m |
| Breadth | : 16.00 m |
| Depth | : 5.60 m |
| Draft (Maximum) | : 4.40 m |
| Displacement @ Max. Draft | : 3068.22 Tons |
| Deadweight | : 1515.22 Tons |
| Operational Draft | : 3.20 m |
| Displacement @ 3.2 m Draft | : 2100.00 Tons |
| Deadweight @ 3.2 m Draft | : 547.00 Tons |
| Lightship | : 1553.00 Tons |

MACHINERY

| | |
|----------------------|--|
| Main Engine | : 2 x Caterpillar 3516 C-HD @ 1600 RPM Total: 4894 BHP; 3650 kW |
| Gear Box | : Reintjes GMBH – LAF 873L K41A |
| Shaft Generator | : 2 x Leroy Somer LSAM 49.3 M6, 600 kW, 440 V, 60 Hz |
| Main Generator | : 3 x Cummins KTA19 – DM 1, 425 kW @ 1800 RPM |
| Main Alternator | : 3 x Leroy Somer LSAM 47.2 M7, 440 V, 60 Hz |
| Emergency Generator | : 1 x Cummins 6BT5.9 – D (M), 90 kW @ 1800 RPM |
| Emergency Alternator | : 1 x Leroy Somer LSAM 44.3 S5, 440 V, 60 Hz |
| Propellers | : 2 x CAT Twin Fin, MPP 690, 4 Bladed; CPP |
| Rudders | : 2 x High Lift Flap Spade Type |
| Bow Thrusters | : 2 x CAT Twin MTT113 CL-02, 400 kW, 6 Tons Thrust, CPP |
| Steering Gear | : 2 x JASTRAM Electro Hydraulic |

DECK MACHINERY & EQUIPMENT

| | |
|-----------------------|--|
| Deck Crane | : 1 x Pedestal Mounted Crane |
| Maximum Boom Outreach | : 12 m |
| Minimum Boom Outreach | : 2.1 m |
| Hoisting Speed | : 20 m / min |
| Safe Working Limit | : 4 Tons @ 2 m - 9 m (Retracted) 3 Tons @ 9 m - 12 m (Extended) |
| Windlass | : 1 x MacGregor, Electro Hydraulic; Duty Pull: 10 Tons @ 9 m / min Rated Pull: 6 Tons @ 15 m / min Double Gypsies with Double Warping Ends Brake Holding @ 43.0 Tons |
| Capstans | : 2 x MacGregor; Hydraulic; 5 Tons @ 15 m / min |
| Anchors | : 2 x 1520 KG |
| Chains | : Total of 660 m; 34 mm (Dia), Stud Chain Link 12 Shackles each (P&S) |
| Tugger Winch | : 2 x MacGregor; 10 Tons each @ 15 m / min Brake Holding @ 15 Tons |

CAPACITIES & PERFORMANCE

| | |
|--------------------------------|---|
| Potable Fresh Water | : 569.80 m3 |
| Fuel Oil | : 367.40 m3 |
| Water Ballast / Drill Water | : 506.40 m3 |
| Mud Tank | : 311.30 m3 (Equipped with Agitators) |
| Bulk Storage Tank | : 130.00 m3 |
| Foam Tank | : 5.50 m3 |
| Dispersant Tank | : 21.4 m3 |
| WB / DW / Fire / GS Pump | : 2 x 100 m3 / hr @ 100 m Head |
| Fresh Water Cargo Pump | : 2 x 100 m3 / hr @ 100 m Head |
| Fuel Oil Cargo Pump | : 2 x 100 m3 / hr @ 100 m Head |
| Mud Pump | : 2 x 70 / 50 m ³ / hr @ 17.50 / 5.0 Bar |
| Free Deck Space | : 360 m2 |
| Design Deck Load | : 5.00 Tons / m2 |
| Deck Cargo Capacity | : 450 Tons |
| Speed | : 12.00 knots @ MCR 8.50 knots @ CSR |
| Fuel Consumption | : 16.00 m3 / day @ MCR 11.00 m3 / day @ CSR |
| Bollard Pull | : 59.00 Tons |
| Starting & Deck Air Compressor | : 2 x HL2 / 77A; 30 Bar |
| Bulk Air Compressor | : 2 x Atlas Copco 13 m3 / min @ Max 7.4 Bar |
| Sewage Treatment Plant | : WCMBR – 30 (U), 30 Persons, Discharge Pump – 3 m3 / hr @ 3 Bar |
| Oily Water Separator | : 1 x YSZ1.0, Discharge Pump – 1.0 m3 / hr |
| Fresh Water Maker | : HSRO – 08B, Capacity – 8 m3 / day |
| Power Supply Sockets (Deck) | : 2 x 440 V; 2 x 220 V; 50A (Appleton model) |

GALLEY & LAUNDRY

| | |
|---------------------------|---------------------------|
| Electric Cooking Range | : 1 x 4 Hot Plates |
| Refrigerator Capacity | : 300 Litres |
| Freezer Capacity | : 10.20 m ³ |
| Chiller Capacity | : 12.50 m ³ |
| Electric Water Boilers | : 2 x 30 Litres |
| Washing Machines & Dryers | : 3 x 10 Kgs & 3 x 10 Kgs |
| Foldable Iron | : 1 with Ironing Table |

NAVIGATION & COMMUNICATION EQUIPMENT

| | |
|----------------------|-------------------------------------|
| Weather Fax Receiver | : 1 x Furuno – FAX – 408 |
| Fixed VHF (GMDSS) | : 2 x FM 8900S & 1 x IC – M506 |
| Portable VHF | : 3 x Standard Horizon HX – 380 |
| MF/ HF/ DSC | : 1 x Furuno – FS – 2575 |
| Rig Move Fixed UHF | : 1 x ICOM IC F5023H UHF |
| Navtex | : 1 x Furuno – NX – 700A |
| Auto Pilot | : 1 x Anschutz X Pilot Star D NP 60 |
| Magnetic Compass | : 1 x Anschutz Reflecta |
| Gyro Compass | : 2 x Anschutz X Standard 22 |
| AIS | : 1 x Furuno – FA – 170 |
| GPS | : 1 x Furuno – GP – 170 |
| EGC | : 1 x Furuno – Felcom 18 |
| SSAS | : 1 x Furuno – Felcom 18 |
| GMDSS | : Area A1 + A2 + A3 |
| 2 Way VHF Telephone | : 3 x IC – GM 1600 E |
| Inmarsat C | : 1 x Furuno – Felcom 18 |
| Radar | : 2 x Furuno (X and S Band) |
| EPIRB | : 1 x ACR – RLB 41 |
| SART | : 2 x Ocean Signal S100 |
| Chart Plotter | : 1 x Garmin GPSMAP7412 |

58.00 m / 4800 BHP / Anchor Handling Tug / Towing / Fi-Fi 1 / OSR – C2

TOWING / ANCHOR HANDLING

Anchor Handling / Towing Winch : 1 x MacGregor; Hydraulic; Double Drum Waterfall
Main Wire Rope – 1 x 600 m x 54 mm
Anchor Handling Rope – 1 x 100 m x 54 mm
Line Pull @ 120 Tons & Brake Holding @ 150 Tons
Shark Jaw : MacGregor; Hydraulic; SWL – 200 Tons
Towing Pin : 2 x MacGregor; Max. Line Load – 200 Tons
Stern Roller : 1 x 200 Tons; 5.8 m (Length) x 1.7 m (Diameter)

FIRE FIGHTING & SAFETY EQUIPMENT

Fi-Fi Pumps : 2 x 1600 m³ / hr @ 120 m Head
Fi-Fi Monitors : 2 x 1200 m³ / hr with Remote Control
Fixed CO2 System : In Engine Room, Paint Locker & Galley
Rescue Boat & Davit : 1 x 9 Pax FRC (Open Type) & Single Arm Davit
Life Rafts : 6 x 15 Persons (Inflatable – Throw Type)
Life Buoys : 8 Nos
Fire Hydrants : 15 Nos (11 x 40 NB & 4 x 50 NB)
Life Jackets : 30 Nos
Search Light : 3 x 2000 Watts
Flood Light : 16 x 500 Watts & 4 x 400 Watts

ACCOMMODATION

1 Man Cabin : 4 Nos
2 Man Cabin : 11 Nos
Total : 26 Person
Hospital : 1 No
Recreation Room : 1 No
Mess Room : 1 No
Office : 1 No

All Cabins are Fully Air Conditioned

OIL SPILL RECOVERY EQUIPMENT (LAMOR I)

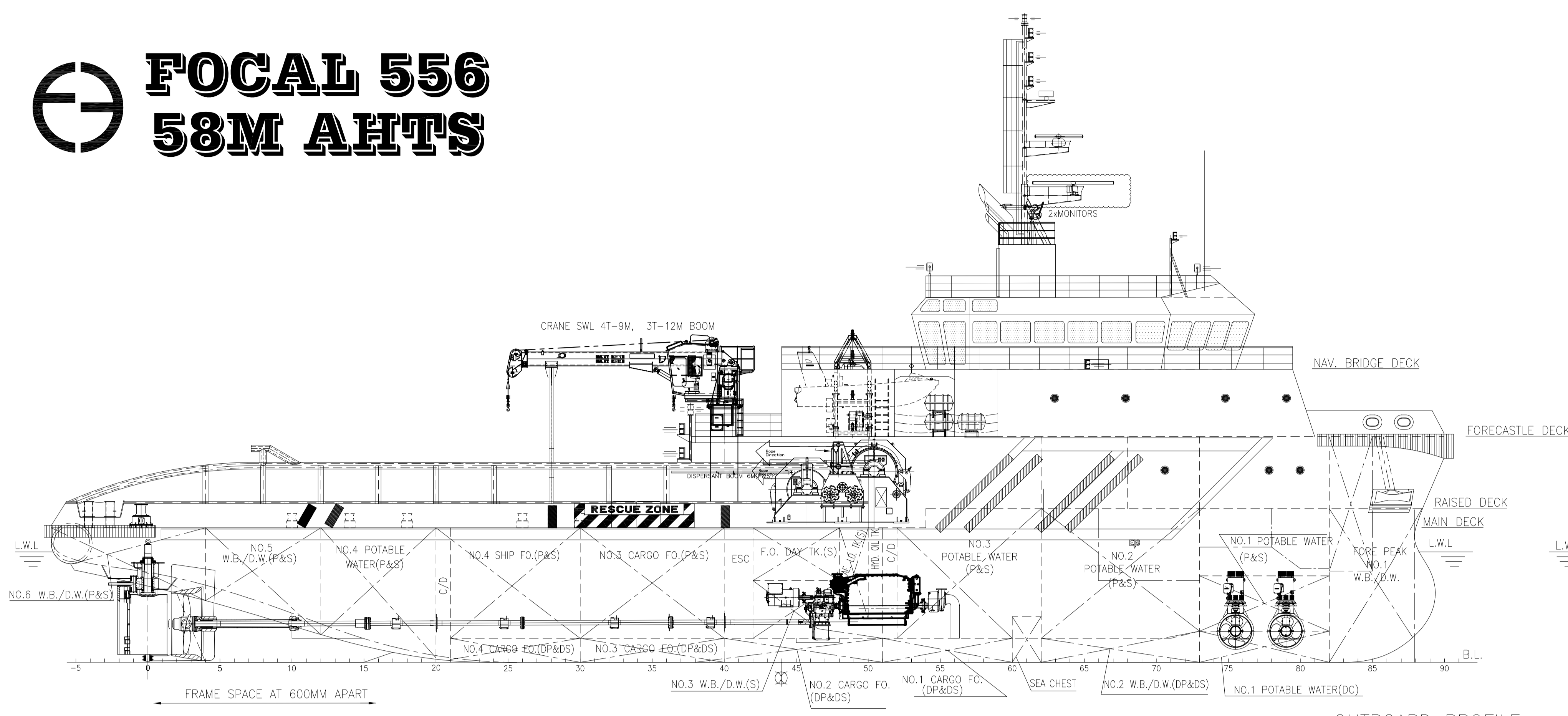
Primary System : 1 x Side Collector - LSC 3C / MKII - 222536
Capacity 152 m³ / hr
Primary Oil Transfer Pump : 1 x GTA PDAS - 226149
Capacity - 140 m³ / hr @ 10 bar
Spare Pump of same Capacity
Discharge Pumps : 2 x Oil Discharge Pumps with
Capacity - 140 m³ / hr @ 10 bar each

OIL SPILL RECOVERY EQUIPMENT (LAMOR II)

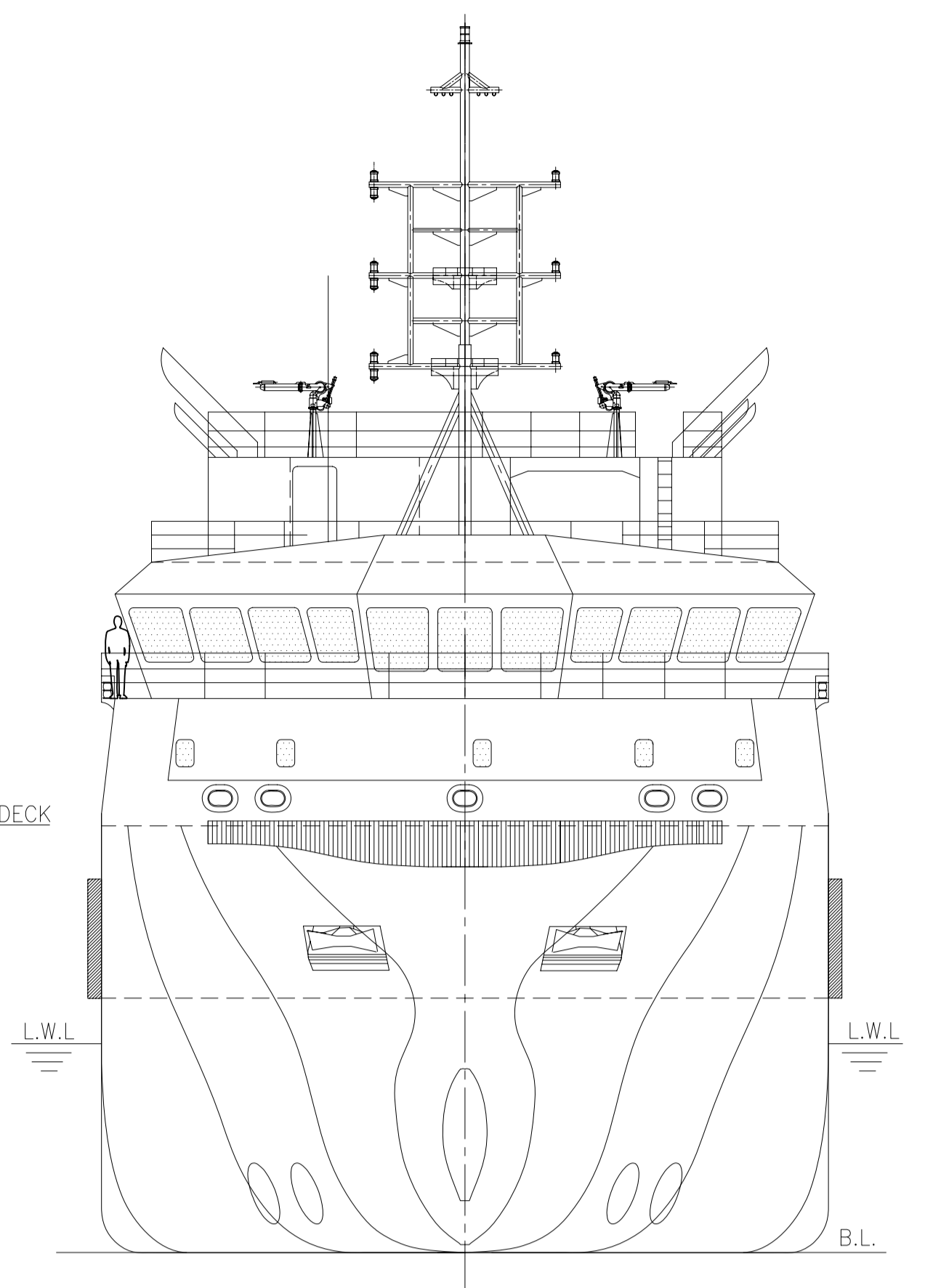
Decanting System : 1 x Decanting Pump with 5m Suction
Hose and 10m Discharge Hose
Portable Cleaning System : 1 x Portable High Pressure Hot Water Cleaning
System Provided with Machines, with a flow range of
0.81 m³ / hr @ 100 Bar
Dispersant Spray System : 1 x Dispersant Pump with Flow Meter LDS 150E-SA-3
2 x Dispersant Spray Arms of Aluminum 12 m Length
Interface System : 1 x Oil Water Interface Detector Ullage Temp UTI Meter
Oil Spill Detection Radar : 1 x Rutter RADAR FLIR Camera
Detection Range of 4NM



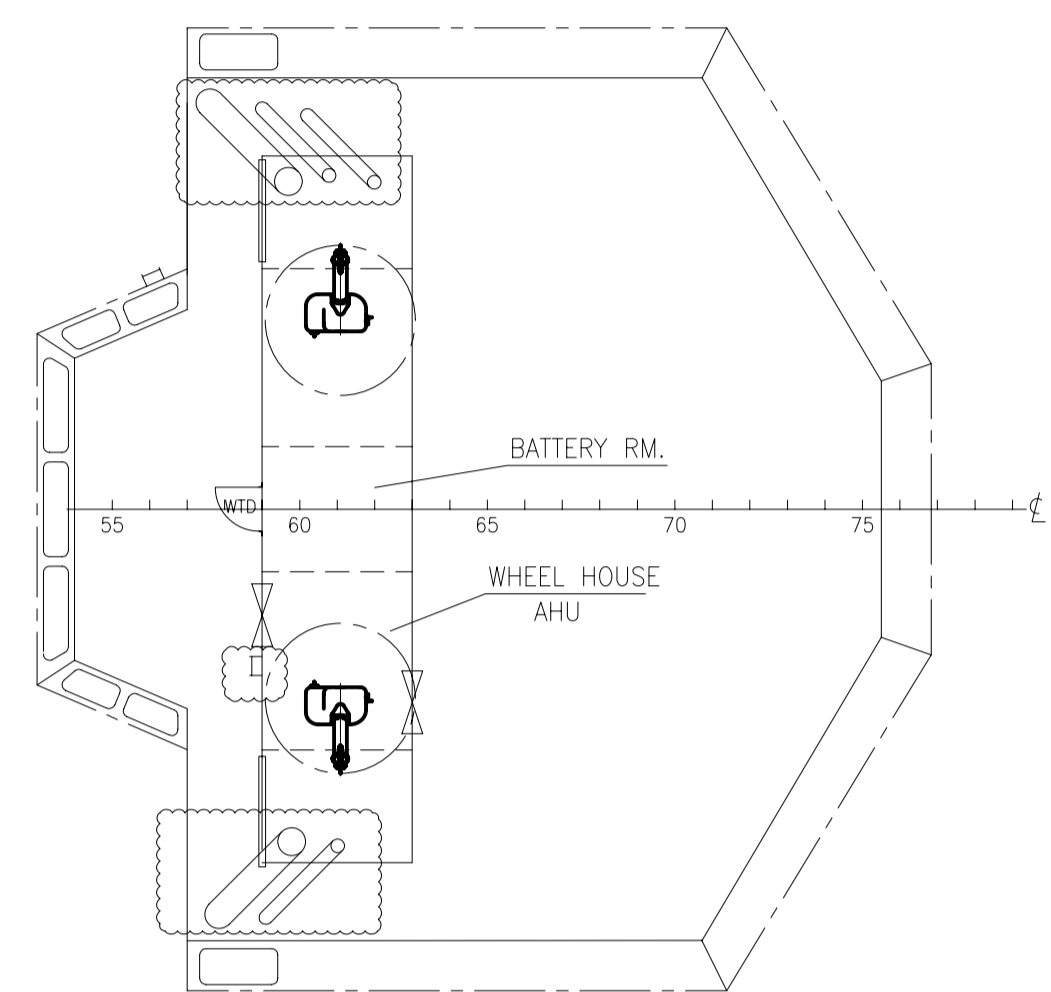
FOCAL 556 58M AHTS



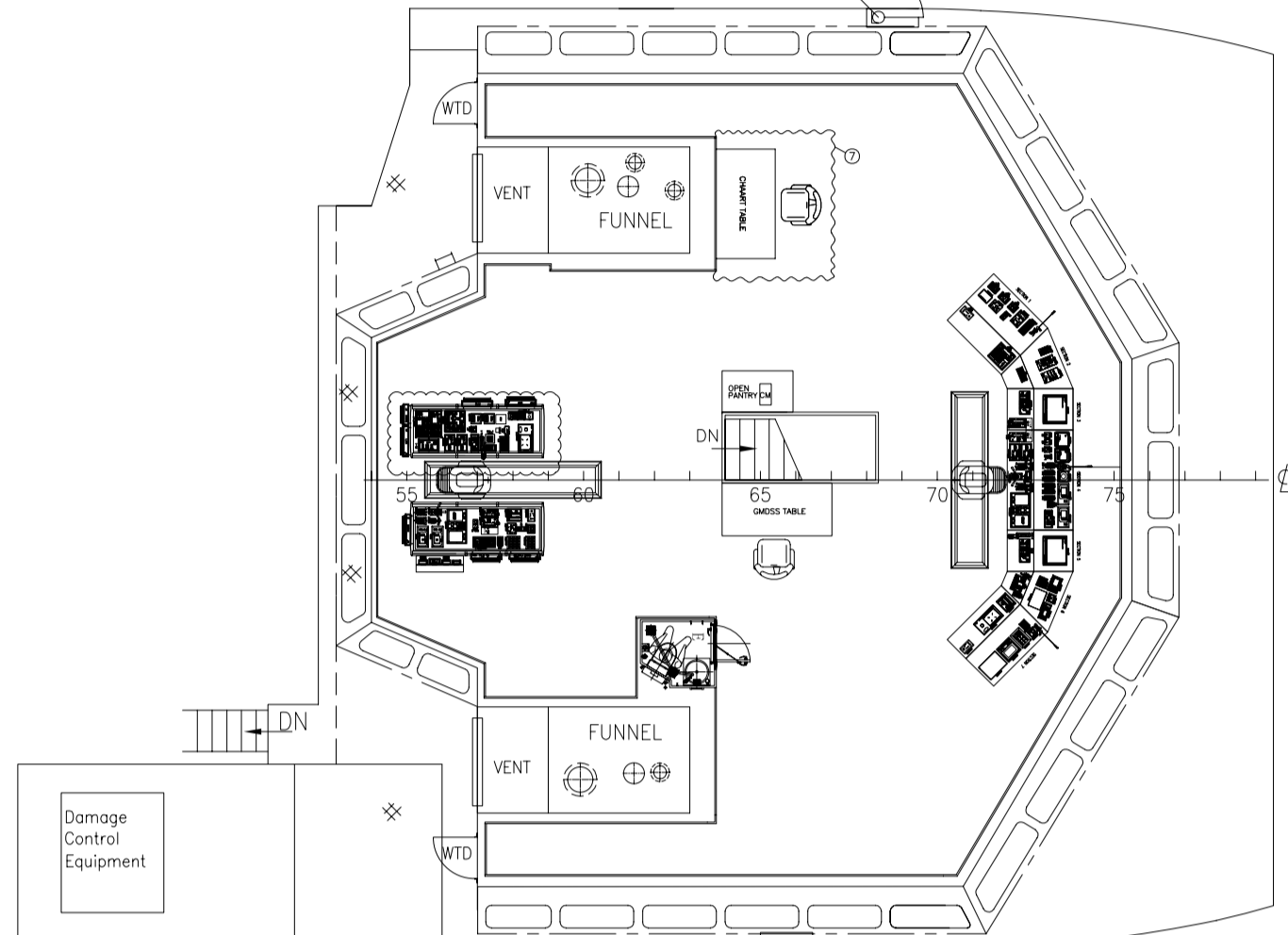
OUTBOARD PROFILE



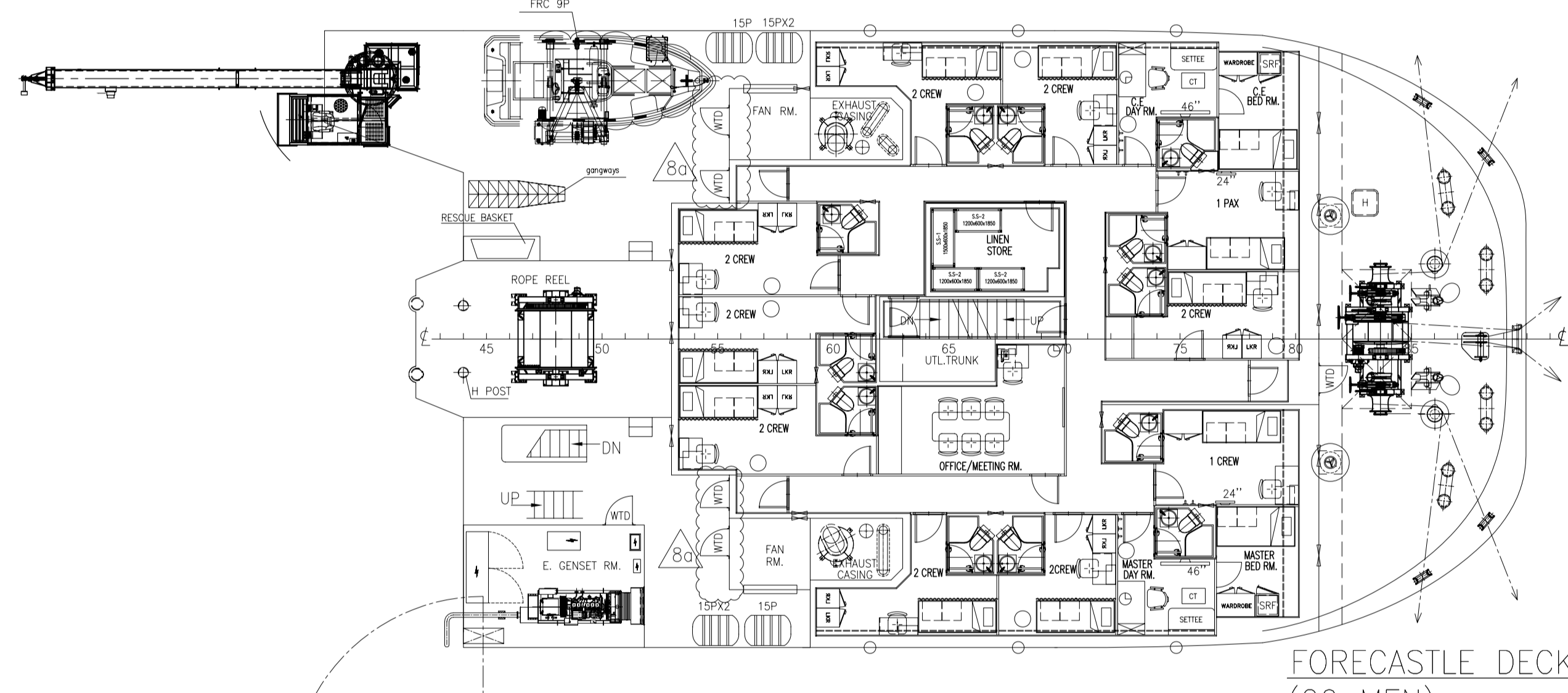
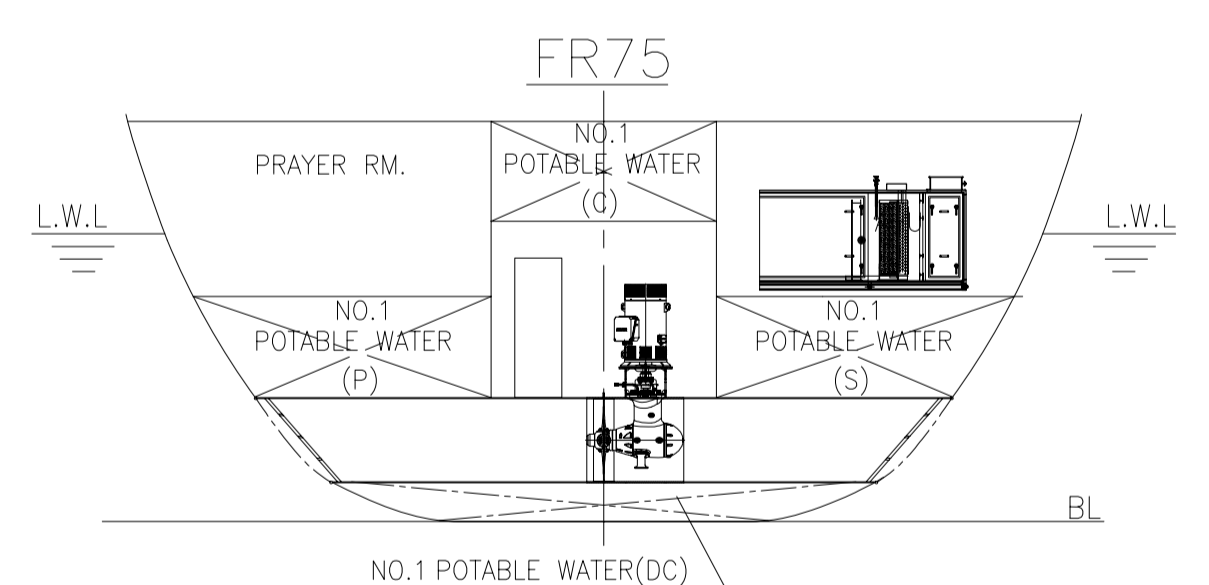
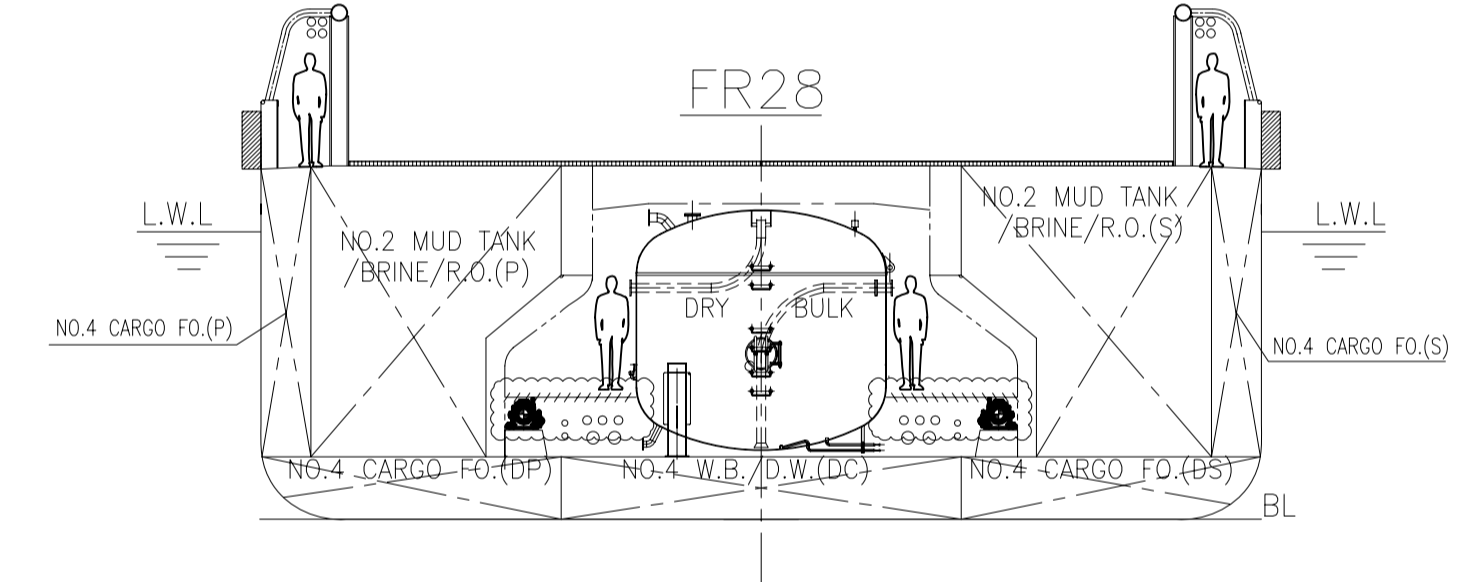
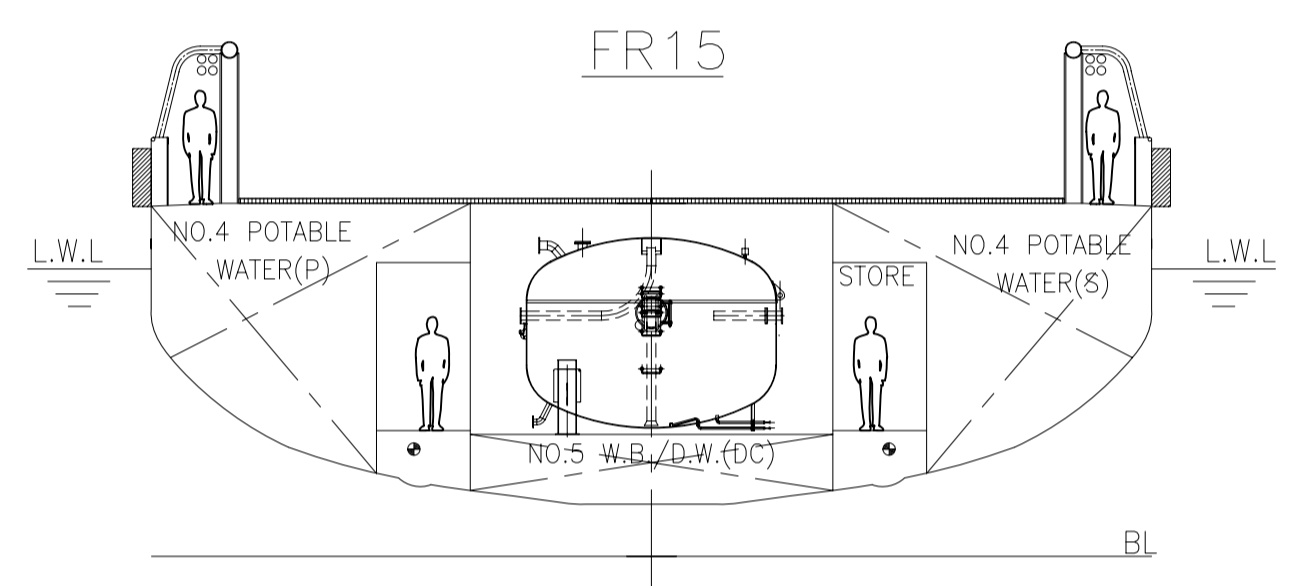
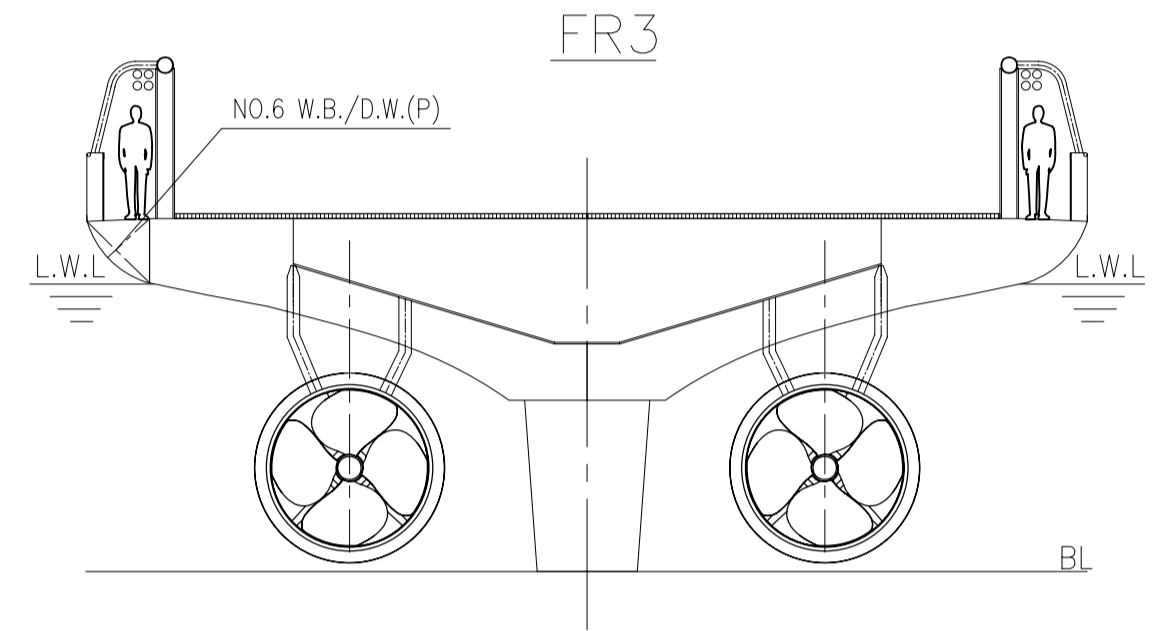
FRONT VIEW



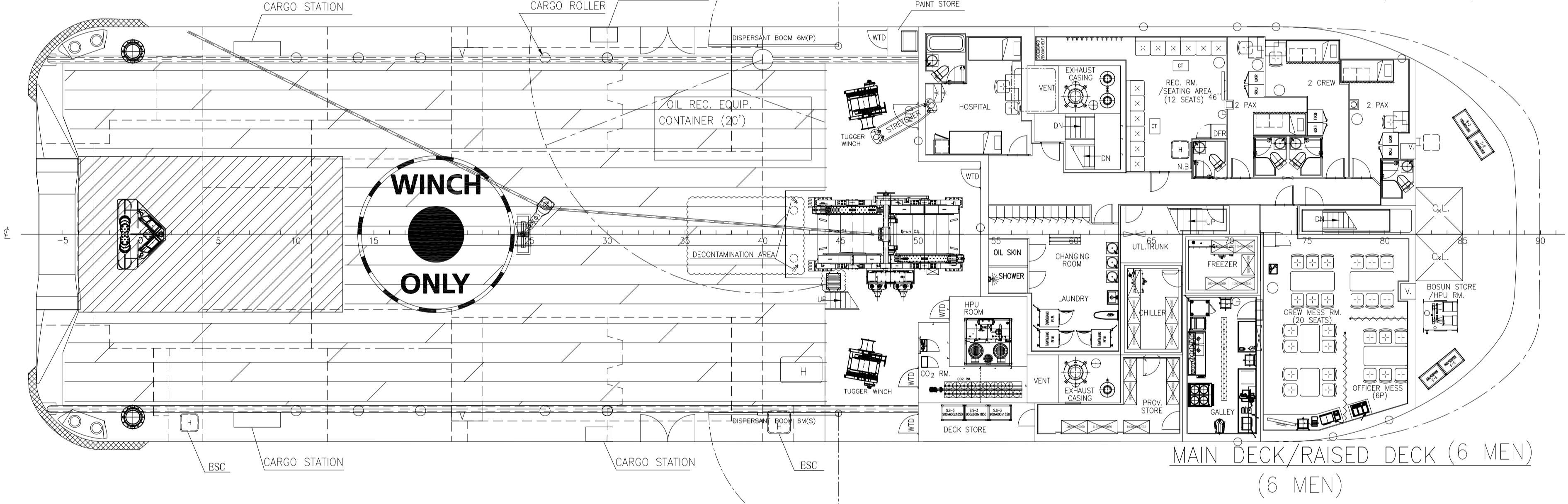
COMPASS DECK



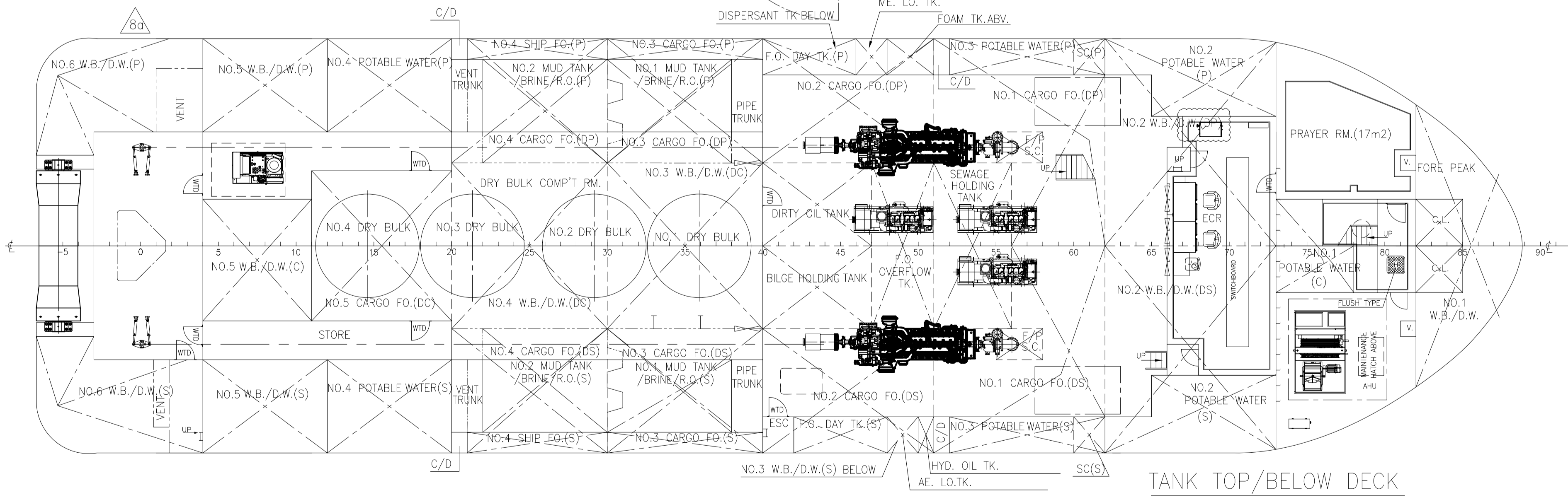
NAV. BRIDGE DECK



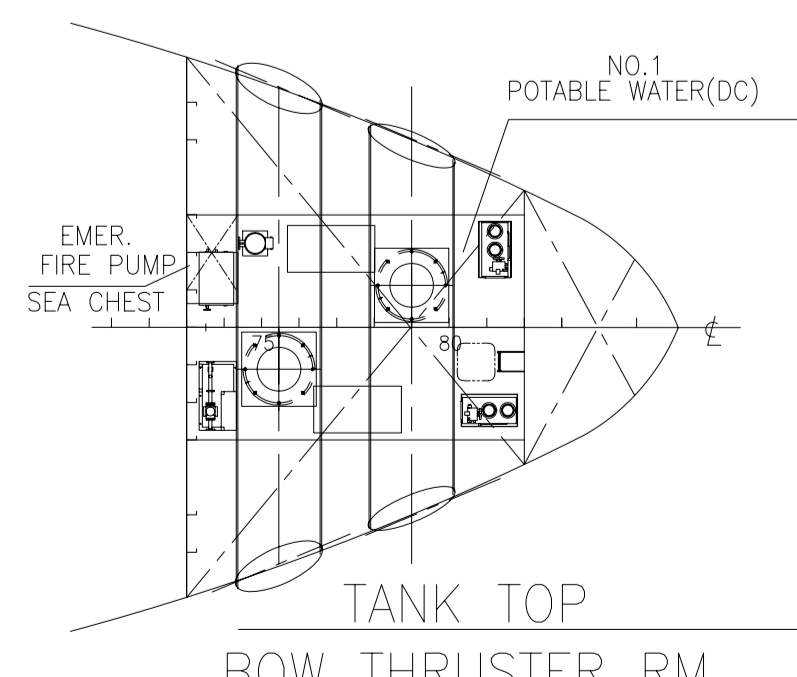
FORECASTLE DECK (20 MEN)



MAIN DECK/RAISED DECK (6 MEN)



TANK TOP/BELW DECK



TANK TOP BOW THRUSTER RM

CLASS: ABS * A1 Ⓢ OFFSHORE SUPPORT VESSEL,
(SUPPLY-HNLS,
AH,
TOW,
OSR-C2,
FFV 1)
* AMS
UWILD
RW

PRINCIPAL PARTICULARS

| | |
|-----------------|--------------|
| LENGTH OA | 58.00 M |
| LENGTH BP | 52.75 M |
| BEAM MLD. | 16.00 M |
| DEPTH MLD. | 5.60 M |
| DRAFT DESIGNED | 4.40 M |
| DRAFT SCANTLING | 4.60 M |
| COMPLEMENT | 26 MEN |
| MAIN ENGINE | 2 x 2,400 HP |
| SERVICE SPEED | 10.5 KTS |
| BOLLARD PULL | 60 T |

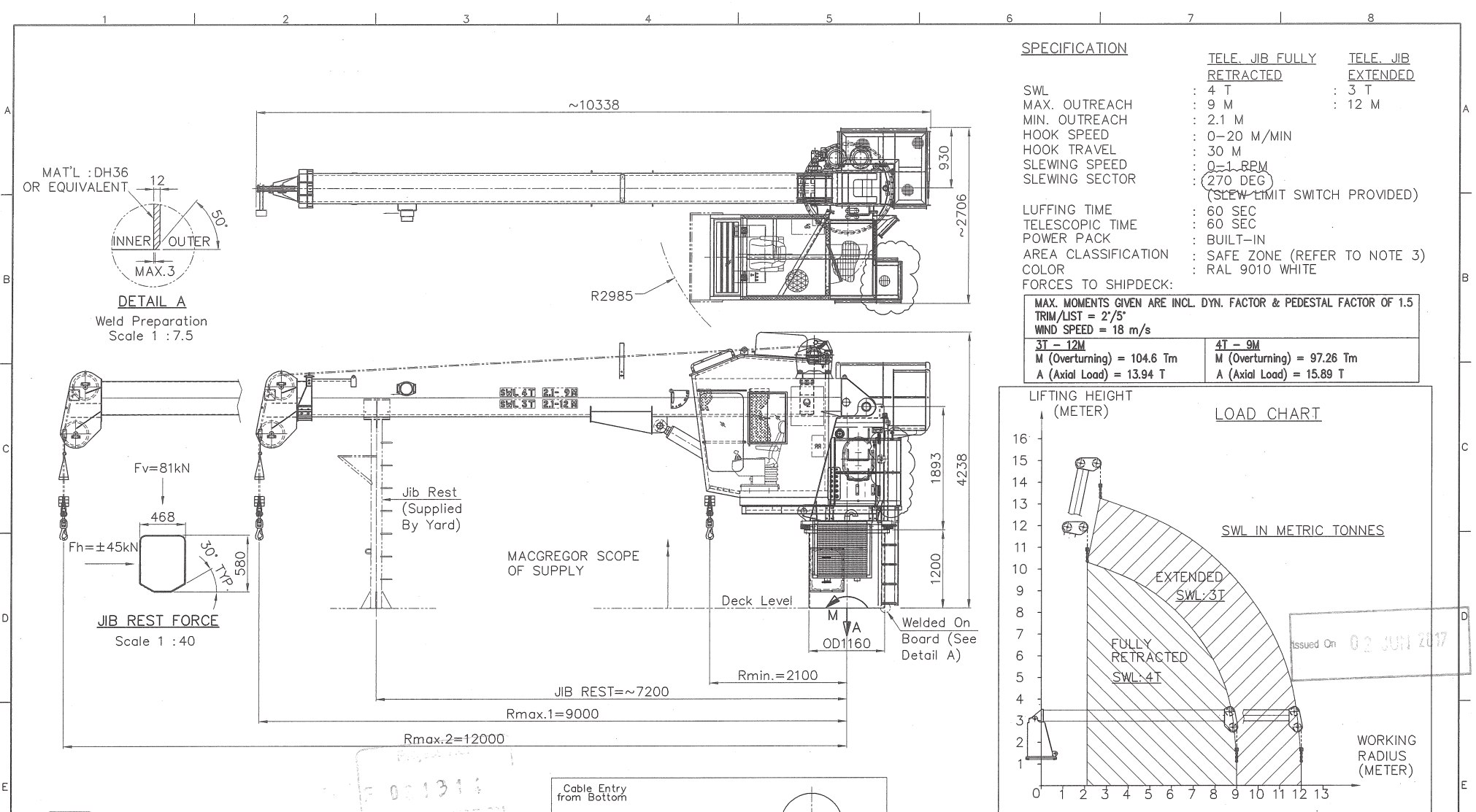
APPROXIMATE CARGO CAPACITIES

| | |
|--------------------|---|
| DEADWEIGHT(3.2M) | ABV. 400 T |
| MAX. DEADWEIGHT | ABV. 1,200 T |
| CARGO DK AREA | 360 M ² @ 5 T/M ² |
| DECK CARGO | 450 T |
| SHIP FO/CARGO FO | 350 M ³ |
| WB/DW | 300 M ³ |
| POTABLE WATER | 500 M ³ |
| MUD/BRINE/REC. OIL | 250 M ³ |
| DRY BULK | 130 M ³ |

THIS DOCUMENT AND THE CONTENT ARE COPYRIGHT AND REMAIN PROPERTY OF FOCAL MARINE & OFFSHORE. THEY MUST NOT BE COPIED IN WHOLE OR IN PART TO ANY THIRD PARTY FOR ANY PURPOSE WITHOUT PRIOR WRITTEN PERMISSION FROM FOCAL MARINE & OFFSHORE. THE RECEIPT OF THIS DOCUMENT IMPLIES ACCEPTANCE OF THIS CONDITION.

| | | | | | |
|--------|----------|------|------|---------------------|-----------------|
| | | | | AOS EMERALD | AS-BUILT |
| MAR/07 | MOD. NO. | SIGN | DATE | General Arrangement | WS672W1-050-002 |
| DES | | | | | REV. |
| CHE | | | | | 1:120 |
| REV | | | | | |
| STA | | | | | |
| APP | | | | TOTAL:1 | PAGE:1 |

WUCHANG SHIPBUILDING INDUSTRY GROUP CO.,LTD

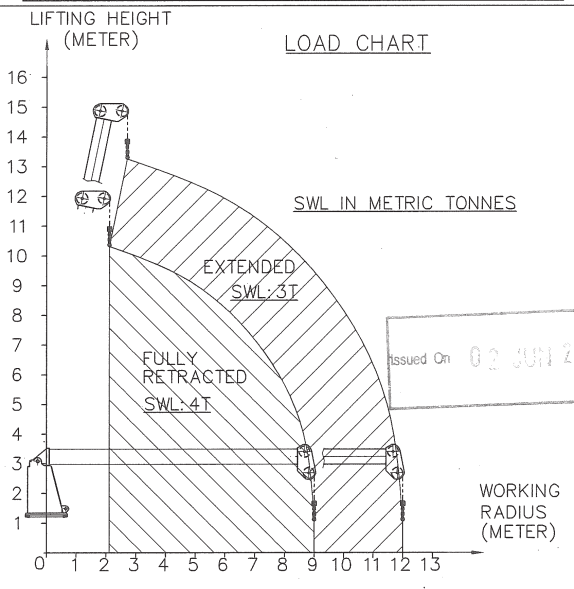


SPECIFICATION

| | TELE. JIB FULLY RETRACTED | TELE. JIB EXTENDED |
|----------------|---------------------------|--------------------|
| SWL | : 4 T | : 3 T |
| MAX. OUTREACH | : 9 M | : 12 M |
| MIN. OUTREACH | : 2.1 M | |
| HOOK SPEED | : 0-20 M/MIN | |
| HOOK TRAVEL | : 30 M | |
| SLEWING SPEED | : 0-1 RPM | |
| SLEWING SECTOR | : 270 DEG | |

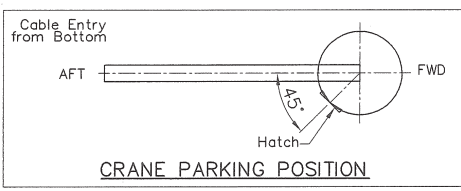
| | |
|---------------------|-------------------------------|
| LUFFING TIME | : 60 SEC |
| TELESCOPIC TIME | : 60 SEC |
| POWER PACK | : BUILT-IN |
| AREA CLASSIFICATION | : SAFE ZONE (REFER TO NOTE 3) |
| COLOR | : RAL 9010 WHITE |

| MAX. MOMENTS GIVEN ARE INCL. DYN. FACTOR & PEDESTAL FACTOR OF 1.5 | |
|---|----------------------------|
| TRIM/LIST = 2/5° | |
| WIND SPEED = 18 m/s | |
| 3T - 12M | 4T - 9M |
| M (Overturning) = 104.6 Tm | M (Overturning) = 97.26 Tm |
| A (Axial Load) = 13.94 T | A (Axial Load) = 15.89 T |



NOTES

1. ALL DIMENSIONS ARE IN MILLIMETERS UNLESS OTHERWISE STATED.
2. THIS CRANE IS DESIGNED IN ACCORDANCE WITH ABS'S GUIDE FOR CERTIFICATION OF LIFTING APPLIANCES, 2016.
3. ALL ELECTRICAL COMPONENTS ON THE CRANE BOOM AND BLOCK SHALL BE RATED FOR OPERATION IN ZONE 1.



| REV | DATE | DESCRIPTION | DRAWN | CHK'D | APPR'D |
|-----|----------|---------------------------------------|-------|-------|--------|
| C1 | 01.06.17 | RE-ISSUED FOR CONSTRUCTION(D044/2K17) | CWC | | |
| C | 25.10.16 | ISSUED FOR CONSTRUCTION | CWC | CZJ | XF |
| B1 | 23.08.16 | RE-ISSUED FOR APPROVAL | CWC | CZJ | XF |
| B | 27.07.16 | ISSUED FOR APPROVAL | CWC | CZJ | XF |
| A | - | N.A | - | - | - |



© MACGREGOR PTE. LTD.
OFFSHORE WINCHES
 (REGISTRATION NUMBER 2013116330)
 ADDRESS : No.15 TUKANG INNOVATION DRIVE SINGAPORE 618299
 TEL: (65) 65973888 FAX: (65) 65973513
 ALL INFORMATION CONTAINED ON THIS DRAWING IS CONFIDENTIAL AND CANNOT BE USED OR DIVULGED TO A THIRD PARTY WITHOUT PERMISSION.

GENERAL TOLERANCES: ACCORDING TO ISO 2768

| RANGE | 0.5-3 | OVER 3-6 | OVER 6-30 | OVER 30-120 | OVER 120-400 | OVER 400-1000 | OVER 1000-2000 | OVER 2000-4000 |
|--------|-------|----------|-----------|-------------|--------------|---------------|----------------|----------------|
| M/C | ±0.1 | ±0.1 | ±0.2 | ±0.3 | ±0.5 | ±0.8 | ±1.2 | ±2 |
| UN M/C | ±0.2 | ±0.3 | ±0.5 | ±0.8 | ±1.2 | ±2 | ±3 | ±4 |

| RANGE | UP TO 10 | OVER 10-50 | OVER 50-120 | OVER 120-400 | OVER 400 |
|--------|----------|------------|-------------|--------------|----------|
| M/C | ±1' | ±0'30" | ±0'20" | ±0'10" | ±0'5" |
| UN M/C | ±1'30" | ±1' | ±0'30" | ±0'15" | ±0'10" |

TITLE :
HYDRAULIC TELESCOPIC SHIPBOARD CRANE GENERAL ARRANGEMENT

ALL DIMENSIONS IN MM UNLESS OTHERWISE STATED
 SCALE 1 : 60
 EST. WT.: ~9350 KG

MODEL NO: MG-TC1301-0409-1 | DWG NO: F0313-14-TC1301-0409-1-0 | SHT. 1/1