



## AOS EAGLE



Atlantic Maritime Group FZE

[www.atlanticnavigation.com](http://www.atlanticnavigation.com)

### GENERAL PARTICULARS

Year of Build / Place	: 2018 / China
IMO Number	: 9818424
Call Sign	: HP8693
Flag / Port of Registry	: Panama / Panama
Class	: ABS
Notation	: ⚡ A1, Offshore Support Vessel (OSR-C2, Supply) Ⓢ, ⚡ AMS CRC, MLC-ACCOM, RW, SPS, UWILD
GRT / NRT	: 1062 / 318
Vessel Manager	: Atlantic Maritime Group

### DIMENSIONS

Length OA	: 45.00 m
Length BP	: 40.32 m
Breadth	: 13.00 m
Depth	: 4.20 m
Draft (Maximum)	: 3.00 m
Displacement @ Max. Draft	: 1132.83 T
Deadweight	: 248.83 T
Lightship	: 884 T

### MACHINERY

Main Engine	: 2 x Caterpillar C32 @ 2100 RPM, V12 – 4 Stroke Total: 2600 BHP; 1939 kW; IMO-TII, Heavy Duty
Gear Box	: 2 x REINTJES GMBH-LAF 675L; 970 kW @ 2100 RPM
Main Generator (Engine) (Alternator)	: 2 x Cummins KTA19, 340 kW @ 1800 RPM : 2 x Leroy Somer, LSAM 47.2S4, 425 kVA, 440V, 60 Hz
Shaft Generator	: 2 x Leroy Somer, 600 kW, 750 kVA; 60 Hz, LSAM49.3 M6
Emergency Generator	: 1 x Cummins 6BT5.9-D (M); 90 kW, 440 V, 60 Hz
Steering Gear	: 2 x Jastram; Electro Hydraulic; Independent Type
Propellers (Kort Nozzle)	: 2 x CPP, CAT-MPP 490, 4 Blades, Twin Screw, 280 RPM
Rudders	: 2 x High Lift Flap Spade Type
Bow Thruster	: 1 x CAT-MTT 113 CL-02, 400 kW @ 1800 RPM 6 T Thrust; 4 Bladed; CPP
Sewage Treatment Plant	: 1 x WCMBR – 40(U); Cap. 40 PAX – 5 m <sup>3</sup> / hr @ 3 Bar
Fresh Water Generator	: 1 x Type – HSRO – 08B; Capacity – 8 T / Day
Starting Air Compressor	: 2 x SPERRE; 32 m <sup>3</sup> / hr @ 30 Bar
Working Air Compressor	: 2 x TMC 15-13 EANA; Capacity 84 m <sup>3</sup> / hr @ 13.0 Bar Equipped with Air Filter / Air Dryer
Fuel Oil Purifier	: 1 x Alfa Laval; 900 L / Hr (MDO @ 13 cst @ 40 Deg C)
Oily Water Separator	: 1 x OWS YSZ1.0; Separating Capacity – 1 m <sup>3</sup> / hr
Search Light	: 2 x 2000 W
Fixed Gas Detection System	: 5 x H2S & 5 x LEL
External Fire Fighting Pump	: 1 x 730 m <sup>3</sup> / hr @ 50 m Head (Attached to STBD ME)
Fire Monitors	: 2 x 350 m <sup>3</sup> / hr @ 70 m Horizontal Throw

### CAPACITIES & PERFORMANCE

Fresh Water Tank	: 146.80 m <sup>3</sup>
Fuel Oil Tank	: 245.00 m <sup>3</sup>
Ballast Water / Drill Water Tank	: 273.70 m <sup>3</sup>
Lube Oil Tank	: 12.00 m <sup>3</sup>
Foam Tank	: 12.10 m <sup>3</sup>
Dispersant Tank	: 1.90 m <sup>3</sup>
Sewage Holding Tank	: 12.10 m <sup>3</sup>
Dirty Oil Tank	: 10.70 m <sup>3</sup>
Bilge Holding Tank	: 10.50 m <sup>3</sup>
Overflow Tank	: 10.70 m <sup>3</sup>
Cargo Fresh Water Pump	: 1 x 90 m <sup>3</sup> / hr @ 30 m Head
Cargo Fuel Oil Pump	: 1 x 92 m <sup>3</sup> / hr @ 38 m Head
Fresh Water Pump	: 1 x 20 m <sup>3</sup> / hr @ 120 m Head
Bilge Pump	: 2 x 35 m <sup>3</sup> / hr @ 25 m Head
Dirty Oil / Sludge Pump	: 1 x 5 m <sup>3</sup> / hr @ 45 m Head
Deck Cargo Space	: 175 m <sup>2</sup>
Design Deck Load	: 3.5 T / m <sup>2</sup>
Deck Cargo Capacity	: 60 T @ 7 Days Endurance 40 T @ 10 Days Endurance 10 T @ 14 Days Endurance
Speed	: 12.4 knots @ 100 % MCR 12.0 Knots @ 85 % CSR
Fuel Consumption	: 11.50 m <sup>3</sup> / day @ 100 % MCR 10.50 m <sup>3</sup> / day @ 85 % CSR

### NAVIGATION & COMMUNICATION EQUIPMENT

Fixed VHF	: 2 x Furuno – FM – 8900S
GMDSS (A1+A2+A3)	: RC-1800T 5MK4
Radar	: 1 x Furuno; FAR-2117-D, X Band
Radar	: 1 x Furuno; FAR-2137S-D, S Band
GPS	: 2 x Furuno, GP-170
Echo Sounder	: 1 x Furuno; FE-800
Navtex Receiver	: 1 x Furuno; NX-700A
Auto-Pilot	: 1 x Anschutz; NP 60
Gyro Compass	: 1 x Anschutz; Standard 22
Magnetic Compass	: 1 x Cassens and Plath GmbH
Inmarsat-C	: 1 x Furuno; Felcom 18
SSB Transceiver	: 1 x Furuno; FS-2575
Speed Log	: 1 x Furuno; DS-60
SART	: 2 x Ocean Signal; S100
EPIRB	: 1 x Ocean Signal; E100
AIS	: 1 x Furuno; FA-170
Portable GMDSS VHF	: 3 x Icom; IC-GM1600 E
Weather Fax	: 1 x Furuno; FAX-408
BNWAS	: 1 x Furuno BR 510
Chart Plotter	: 1 x Garmin GPS MAP 7412
Satcom	: V – Sat (High Speed Internet)
Satellite TV	: OSN

# 45 m / 2600 BHP / Oil Spill Recovery / Work Utility Vessel with Telescopic Crane

## FIRE FIGHTING & SAFETY EQUIPMENT

Bilge / Ballast / Fire / GS Pump	: 2 x 80 m <sup>3</sup> / hr @ 60 m Head
Emergency Fire Pump	: 1 x 35 m <sup>3</sup> / hr @ 50 m Head
Fixed CO2 System	: Engine Room, ECR, Paint Locker, Galley Hood & Exhaust Casing
Rescue Boat & Davit	: 1 x 6 Pax (Open Type) & 20 kN Single Arm Davit
Life Rafts	: 6 x 15 Pax (Inflatable – Throw Type)
Life Buoys	: 8 Nos
Fire Hydrant	: DN40 x 12 Nos & DN50 x 2 Nos
Life Jackets	: 34 Nos

## GALLEY & LAUNDRY

Electric Cooking Range	: 1 x 4 Hot Plates
Chiller & Freezer	: 15.0 m <sup>3</sup> & 14.3 m <sup>3</sup> ; 1 Month for Full POB
Refrigerator	: 1 x 300 Liters
Electric Water Boiler	: 2 x 30 Liters
Washing Machine	: 3 x 10 Kg
Dryer	: 3 x 10 Kg
Iron	: 1 with Ironing Table

## ACCOMMODATION

1 Man Cabin	: 4 Nos
2 Man Cabin	: 13 Nos
Total	: 30 Person
Hospital	: 1 No. with 1 Bed
Mess Room	: 1 No. with 30 Persons capacity in Single Seating

All Cabins Fully Air Conditioned

## ELECTRICAL SUPPLY & SOCKETS ON MAIN DECK

Power Supply Sockets	: 6 x 440 V @ 80 Amps (Explosion Proof Sockets)
	: 2 x 220 V @ 60 Amps (Explosion Proof Sockets)
	: 4 x 220 V @ 25 Amps (Explosion Proof Sockets)
	: 2 x 110 V @ 30 Amps (Explosion Proof Sockets)
Reefer Sockets	: 2 x 440 V @ 50 Amps
	: 2 x 220 V @ 60 Amps

## DECK MACHINERY & EQUIPMENT

Deck Crane	: 1 x MacGregor; Telescopic Crane (Hydraulic) SWL: 10 MT @ 3.1 m & 0.5 MT @ 18.3 m Minimum Outreach – 2.6 m Maximum Outreach – 18.3 m
Anchor Windlass / Mooring Winch	: 1 x MacGregor; Hydraulic Operated Winch Drum Capacity 160m x 32mm Dia. PP Rope Rated Pull – 4 T @ 15 m / min (1 <sup>st</sup> Layer) Brake Holding – 15 T (1 <sup>st</sup> Layer) Double Gypsies with Double Warping Ends Windlass – 5 T @ 9 m / min; Brake Holding – 33.8 T
Anchor chain	: Total of 660 m x 30 mm Diameter U3 Chain
Anchor	: 2 x 1230 kg; High Holding Type
Tugger Winch	: 2 x MacGregor; Hydraulic Driven; Rated Pull – 5 T Each @ 15 m / min (1 <sup>st</sup> Layer) Brake Holding – 7.5 T (1 <sup>st</sup> Layer)
Vertical Capstan	: 2 x 5 T @ 15 m / min; Warping Head – 400 mm

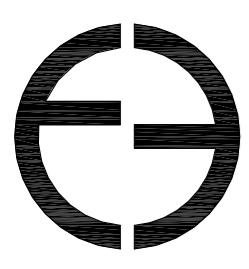
## OIL SPILL RECOVERY EQUIPMENT (LAMOR I)

Storage	: 1 x 20 Ft Container with End and Side Doors
Primary System	: 1 x Side Collector – LSC 3C / MKII - 222536 Capacity 152 m <sup>3</sup> / hr
Primary Oil Transfer Pump	: 1 x Oil Transfer Pump – GTA 140 Capacity – 140 m <sup>3</sup> / hr @ 10 bar With Spare Pump of same Capacity
Discharge Pumps	: 2 x Oil Discharge Pumps – GTA 140 Capacity – 140 m <sup>3</sup> / hr @ 10 bar each

## OIL SPILL RECOVERY EQUIPMENT (LAMOR II)

Decanting System	: 1 x Decanting Pump with 5m Suction Hose and 10m Discharge Hose
Portable Cleaning System	: 1 x Portable High Pressure Hot Water Cleaning System Provided with Machines, with a flow range of 0.81 m <sup>3</sup> / hr @ 100 Bar
Dispersant Spray System	: 1 x Dispersant Pump with Flow Meter CS 150 – GA 2 x Dispersant Spray Arms of Aluminum 12 m Length
Interface System	: 1 x Oil Water Interface Detector Ullage Temp UTI Meter
Oil Spill Detection Radar	: 1 x Rutter RADAR FLIR Camera Detection Range of 4NM





# FOCAL 557 45M WUV

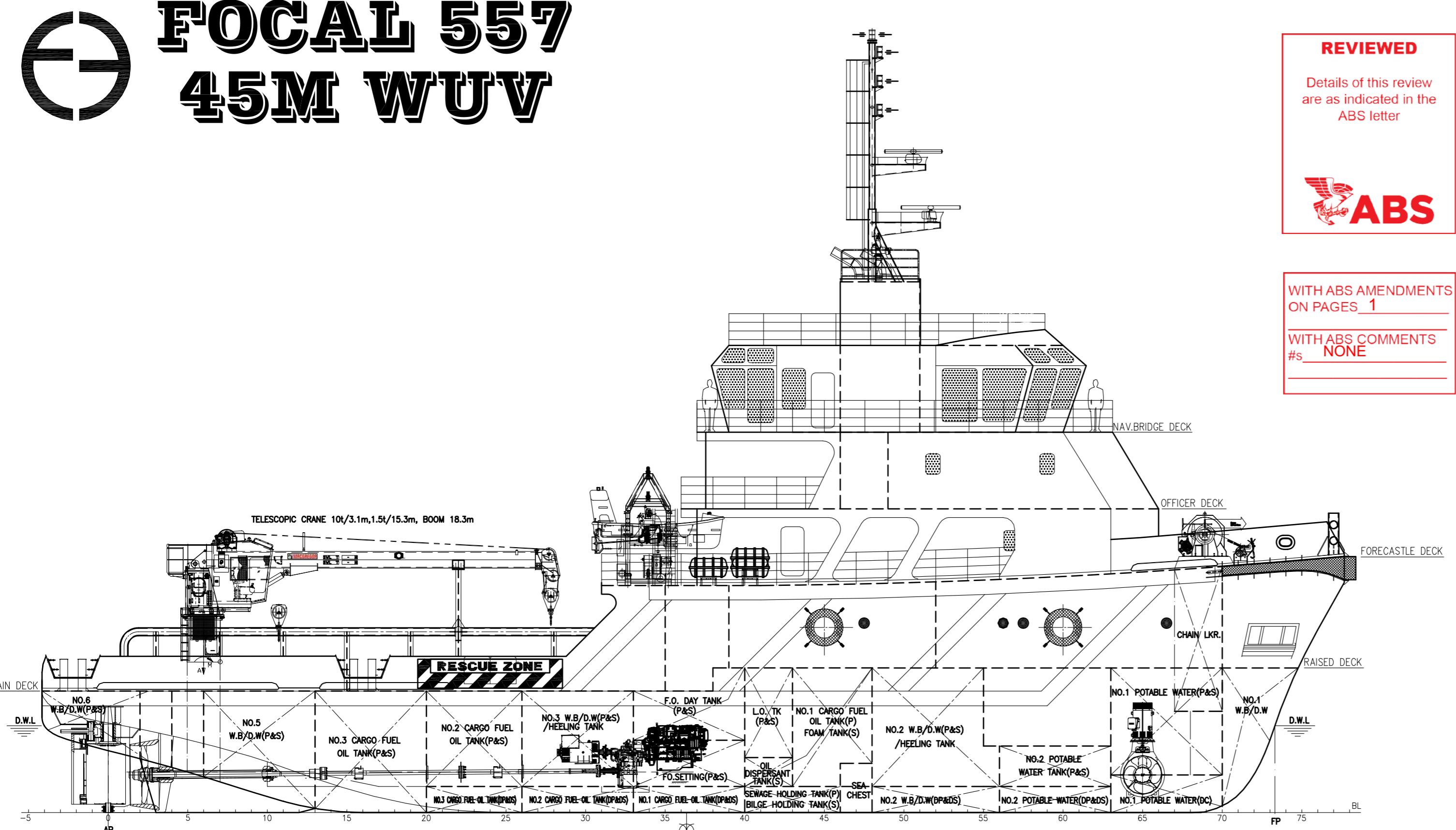
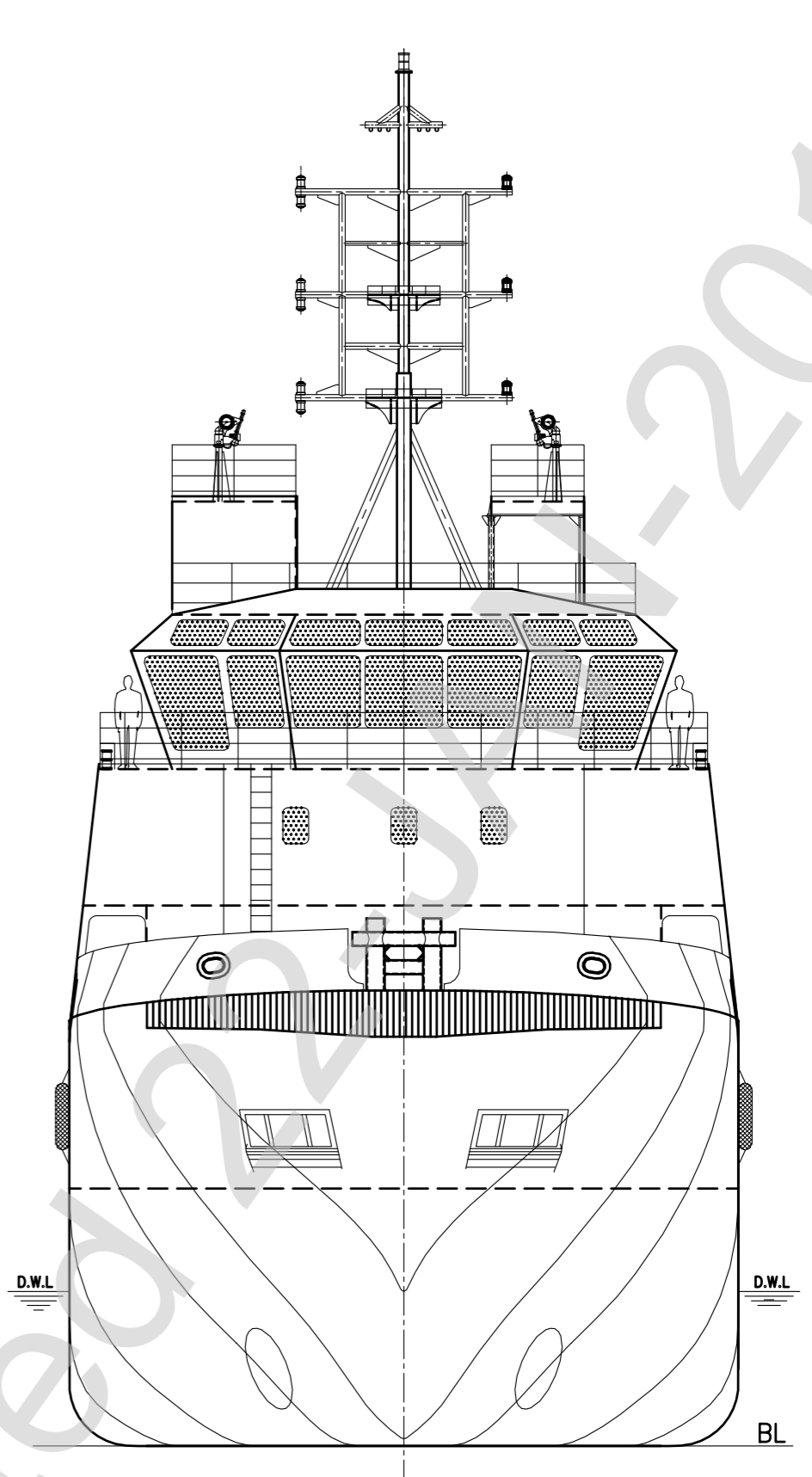
REVIEWED

Details of this review  
are as indicated in the  
ABS letter



WITH ABS AMENDMENTS  
ON PAGES 1

WITH ABS COMMENTS  
#s NONE



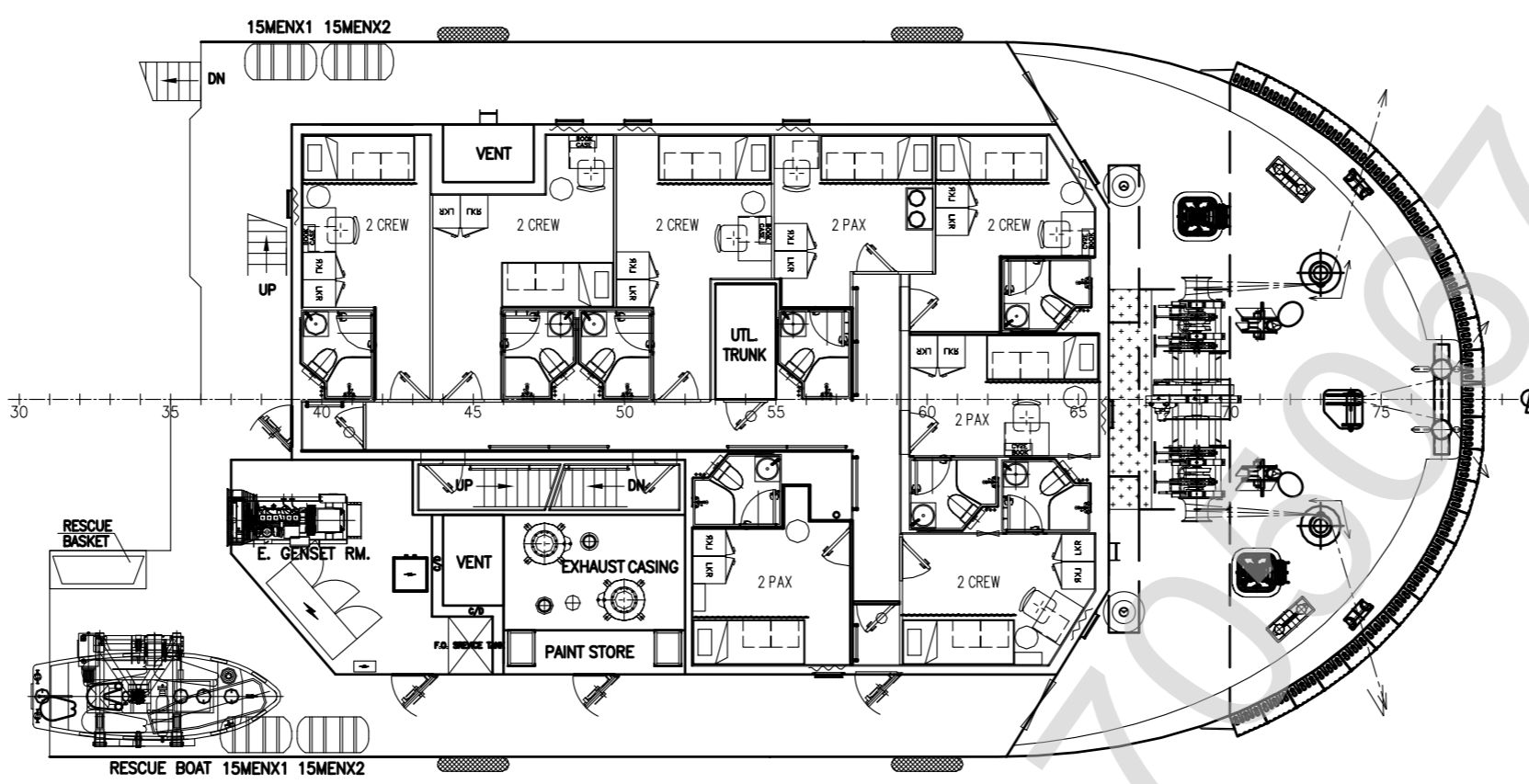
## PRINCIPAL PARTICULARS & CAPACITIES

LENGTH OA \_\_\_\_\_ 45.00M  
 LENGTH BP \_\_\_\_\_ 40.32M  
 BEAM MLD. \_\_\_\_\_ 13.00M  
 DEPTH MLD. \_\_\_\_\_ 4.20M  
 DRAFT SCANTLING \_\_\_\_\_ 3.30M  
 DRAFT DESIGNED \_\_\_\_\_ 3.00M  
 COMPLEMENT \_\_\_\_\_ 30 MEN

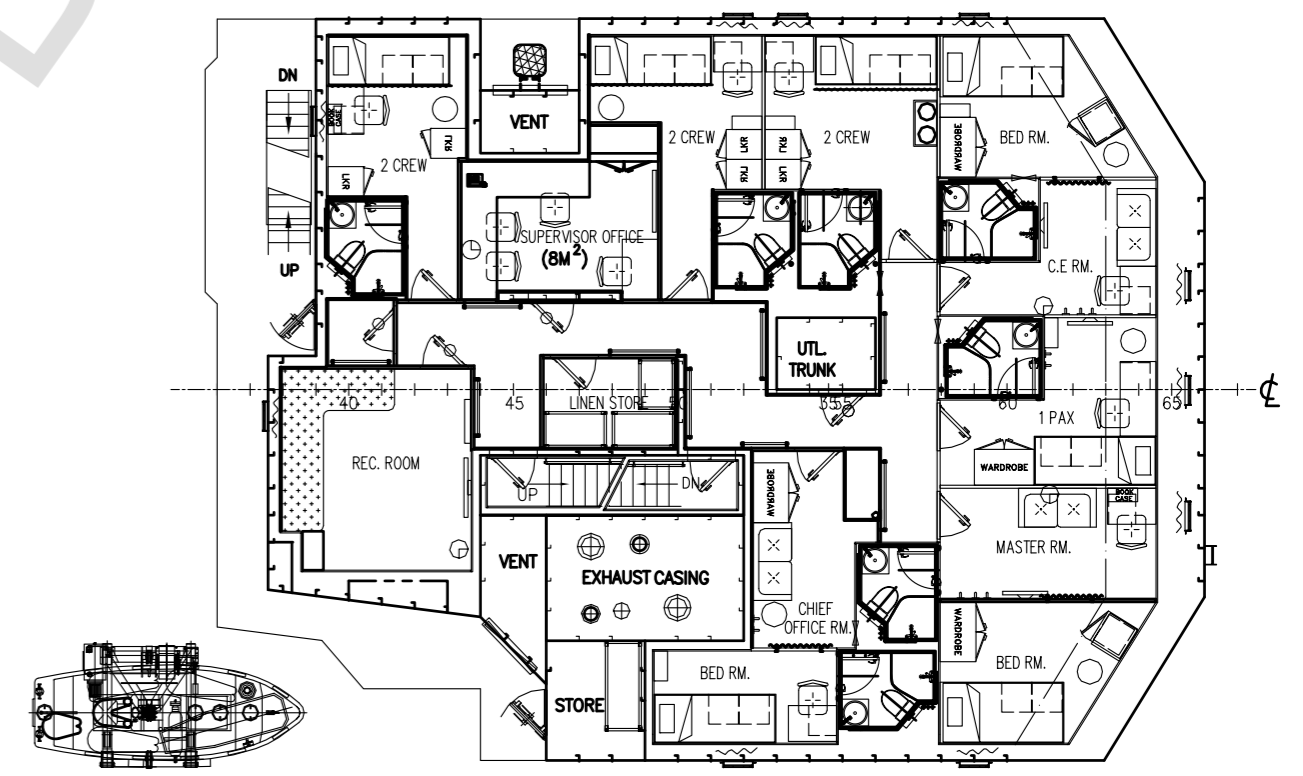
MAIN ENGINE \_\_\_\_\_ 2 x 1,300 HP  
 TRIAL SPEED \_\_\_\_\_ 12.5 KTS

CARGO DK AREA \_\_\_\_\_ 175 M<sup>2</sup>  
 DK LOADING \_\_\_\_\_ 3.5 T / M<sup>2</sup>

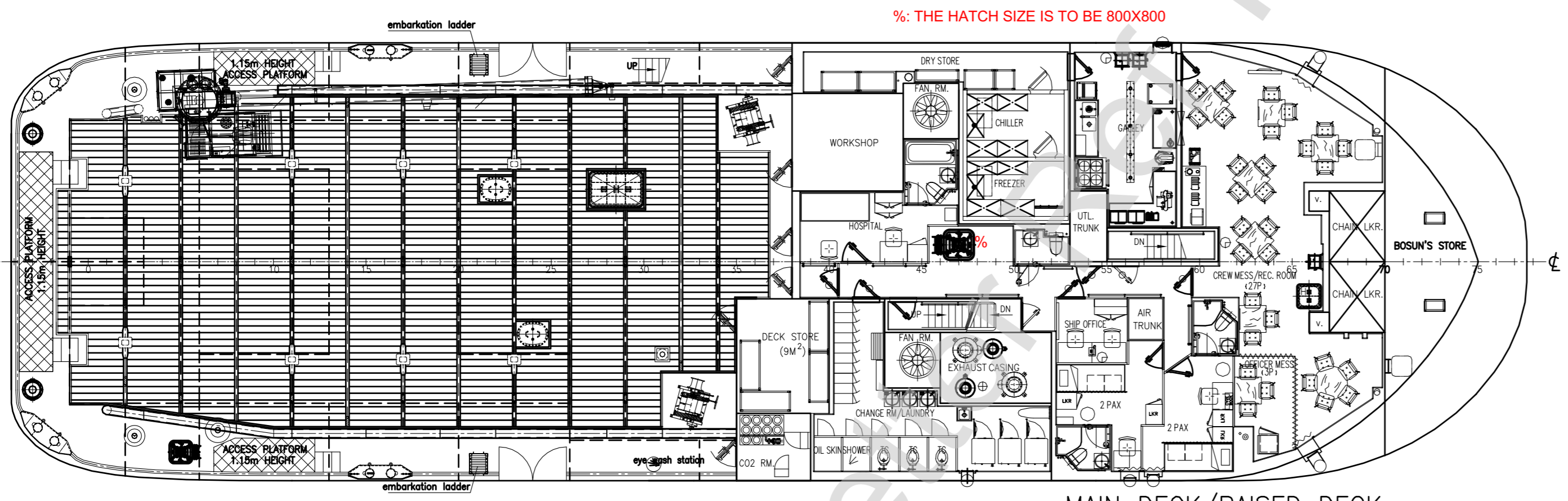
FUEL OIL \_\_\_\_\_ 230 M<sup>3</sup>  
 W.B/D.W \_\_\_\_\_ 130 M<sup>3</sup>  
 POTABLE WATER \_\_\_\_\_ 120 M<sup>3</sup>  
 SLOP / REC OIL TANK \_\_\_\_\_ 50 M<sup>3</sup>



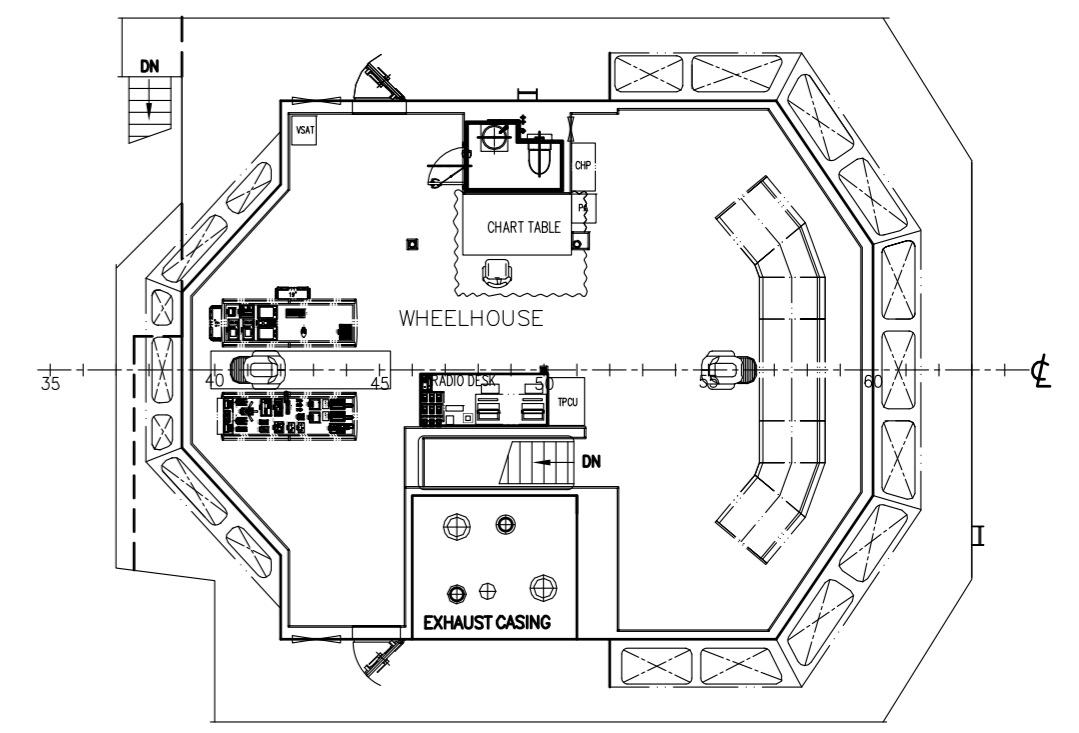
FORECASTLE DECK  
(16 MEN)



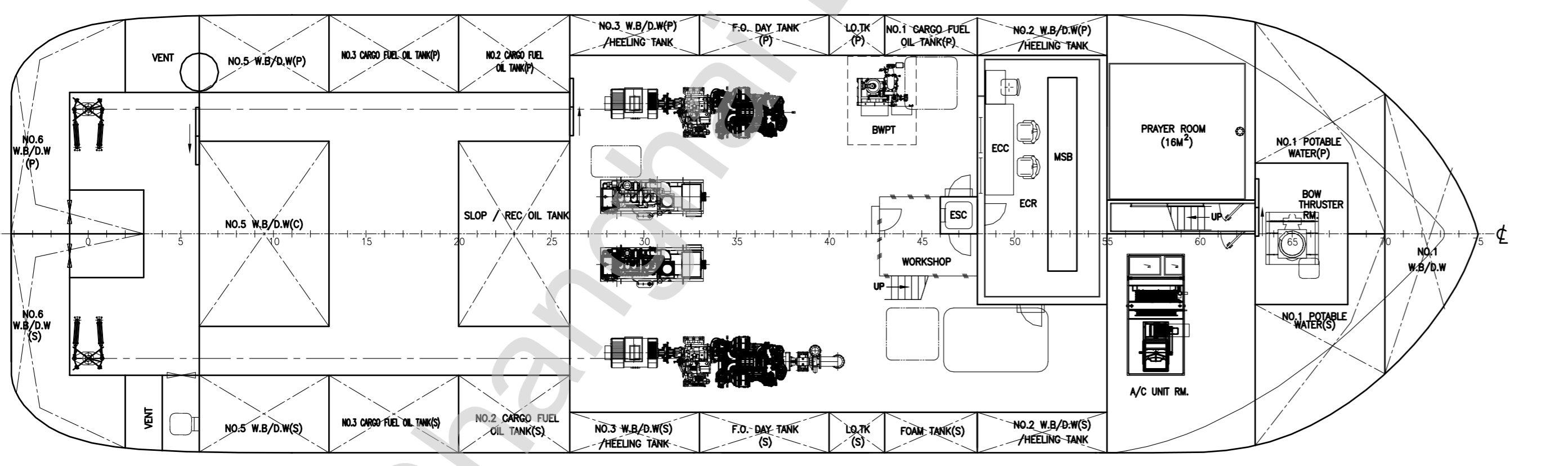
OFFICER DECK  
(10 MEN)



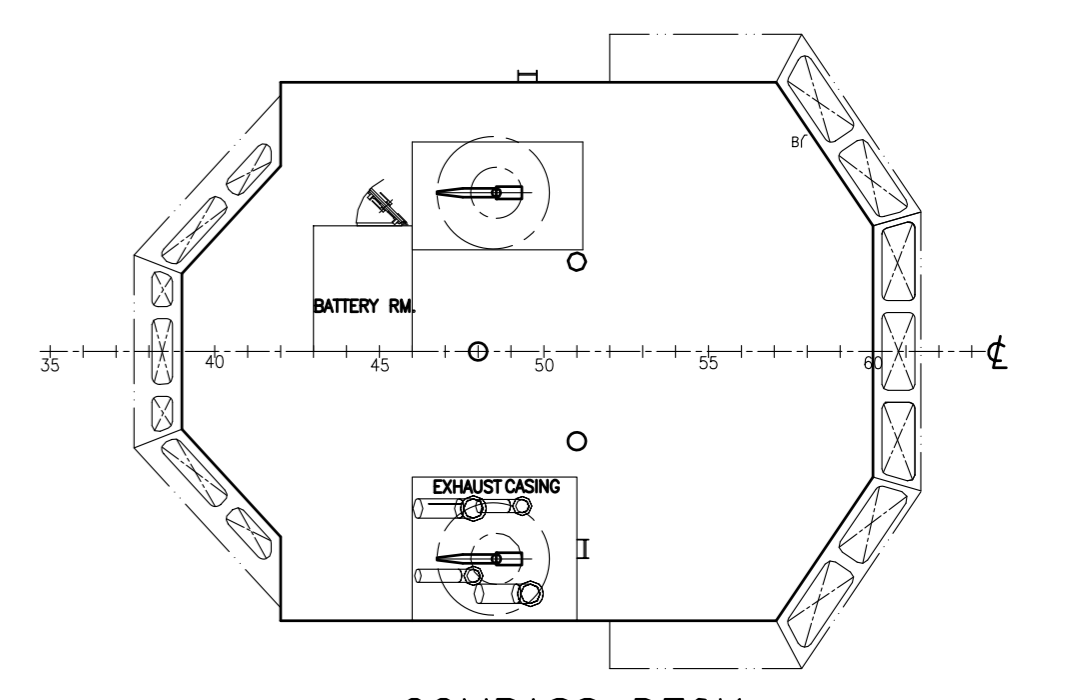
MAIN DECK/RAISED DECK  
(4 MEN)



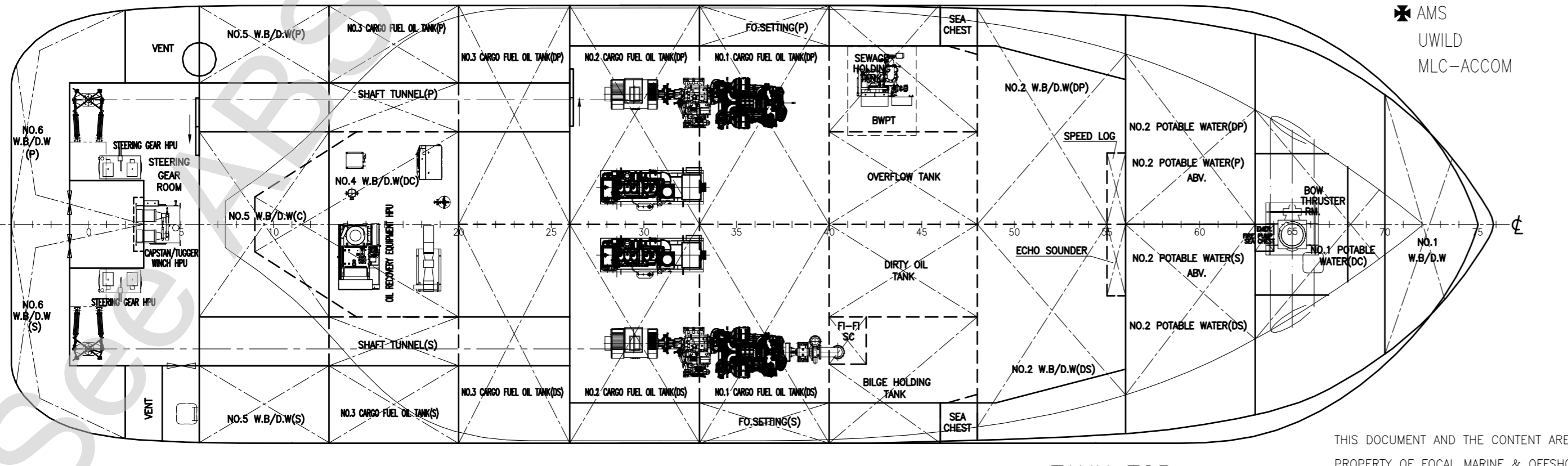
NAV. BRIDGE DECK



BELOW MAIN DECK



COMPASS DECK

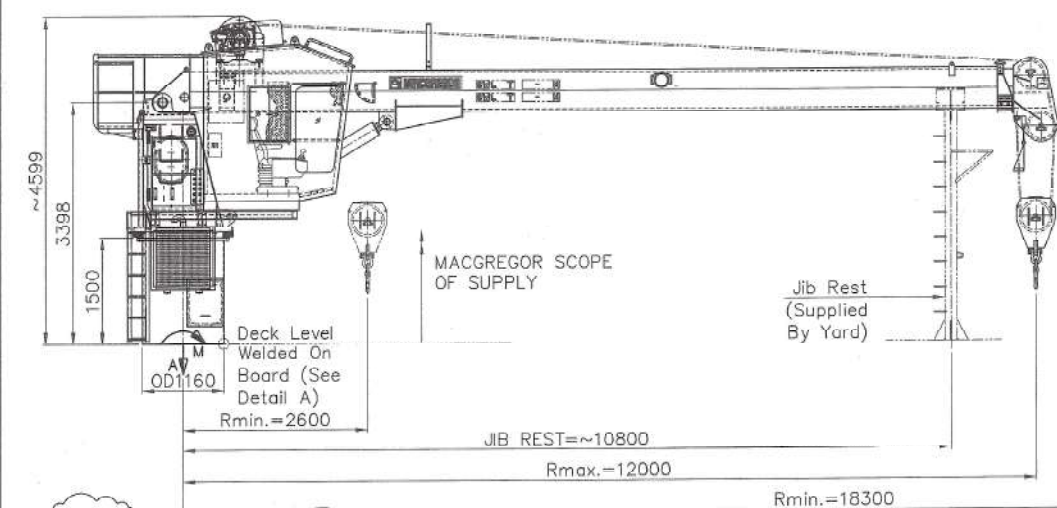
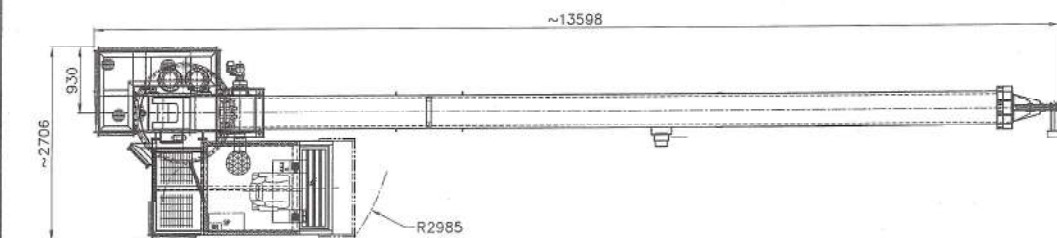


TANK TOP

CLASS: ABS \* A1 (E) OFFSHORE SUPPORT VESSEL  
 (SUPPLY, OSR-C2)  
 SPS  
 \* AMS  
 UWILD  
 MLC-ACCOM

THIS DOCUMENT AND THE CONTENT ARE COPYRIGHT AND REMAIN  
 PROPERTY OF FOCAL MARINE & OFFSHORE. THEY MUST NOT BE  
 COPIED IN WHOLE OR IN PART TO ANY THIRD PARTY FOR ANY  
 PURPOSE WITHOUT PRIOR WRITTEN PERMISSION FROM FOCAL  
 MARINE & OFFSHORE. THE RECEIPT OF THIS DOCUMENT IMPLIES  
 ACCEPTANCE OF THIS CONDITION.

8	AMENDED PER BUILT ON SITE	ZF	DEC-27-2017
REV NO.	REVISION DESCRIPTION	BY	DATE
OWNER	ATLANTIC MARITIME GROUP FZE		
BUILDER	WUCHANG SHIPBUILDING INDUSTRY CO., LTD HULL NO.: BG0011A09M		
PROJECT	45M WORK / UTILITY VESSEL 'FOCAL 557'		
APPROVE	DWG TITLE:	JOB NO.: P-1927	
VERIFY	GENERAL	DWG NO.: P-1927-G01	
CHECKER	ARRANGEMENT	SCALE: 1:125 (A1)	
DRAWER	ZF	CLASS: ABS	
<b>FOCAL MARINE &amp; OFFSHORE</b> EMAIL: info@focalmarine.com SHANGHAI TEL: 86-21-58705786 SINGAPORE TEL: 65-68481387 FAX: 86-21-50313265 FAX: 65-68481291			



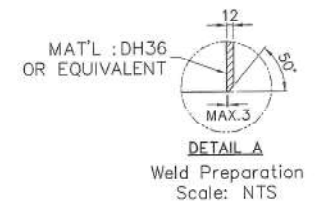
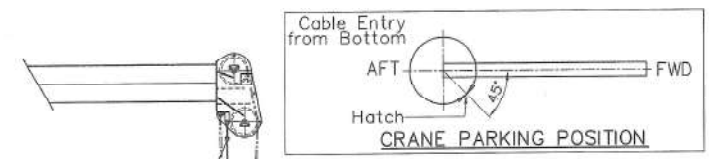
- NOTES**
1. ALL DIMENSIONS ARE IN MILIMETERS UNLESS OTHERWISE STATED.
  2. THIS CRANE IS DESIGNED IN ACCORDANCE WITH ABS'S GUIDE FOR CERTIFICATION OF LIFTING APPLIANCES, 2016.
  3. ALL ELECTRICAL COMPONENTS ON THE CRANE BOOM AND BLOCK SHALL BE RATED FOR OPERATION IN ZONE 1.

**SPECIFICATION**

	<b>TELE. JIB FULLY RETRACTED</b>	<b>TELE. JIB EXTENDED</b>
SWL	: 10 T / 2 T	: 0.5 T Project No. 18.3M
MAX. OUTFRACH	: 3.1 M / 12 M	: 15.3 M / 18.3M
MIN. OUTFRACH	: 2.6 M	
HOOK SPEED	: 0-15 M/MIN	
HOOK TRAVEL	: 50 M	
SLEWING SPEED	: 0-1 RPM	
SLEWING SECTOR	: TBA (<360DEG)	
	(SLEW LIMIT SWITCH PROVIDED)	
LUFFING TIME	: 120 SEC	
TELESCOPIC TIME	: 80 SEC	
POWER PACK	: BUILT-IN	
AREA CLASSIFICATION	: SAFE ZONE (SEE NOTE 3)	
COLOR	: RAL 9010 WHITE	
FORCES TO SHIPDECK:		
	<b>TELE. JIB FULLY RETRACTED</b>	<b>EXTENDED</b>
	M (Overturning) = 113.68 Tm	M (Overturning) = 117.46 Tm
	A (Axial Load) = 30.19 T	A (Axial Load) = 13.62 T

Project No. F 0308  
FOR PRODUCTION

Issued On: 09 NOV 2015



C	07.11.16	RE-ISSUED FOR CONSTRUCTION	CWC		
B	29.07.16	ISSUED FOR APPROVAL	CWC	CZJ	XF
A	-	N.A	-	-	-
REV	DATE	DESCRIPTION	DRAWN	CHK'D	APPR'D

**MACGREGOR PTE. LTD.**  
OFFSHORE WINCHES  
(REGISTRATION NUMBER 2013116330)

ADDRESS : No.15 TUKANG INNOVATION DRIVE, SINGAPORE 618299  
TEL: (65) 65973888 FAX: (65) 65973513

ALL INFORMATION CONTAINED ON THIS DRAWING IS CONFIDENTIAL AND CANNOT BE USED OR DIVULGED TO A THIRD PARTY WITHOUT PERMISSION.

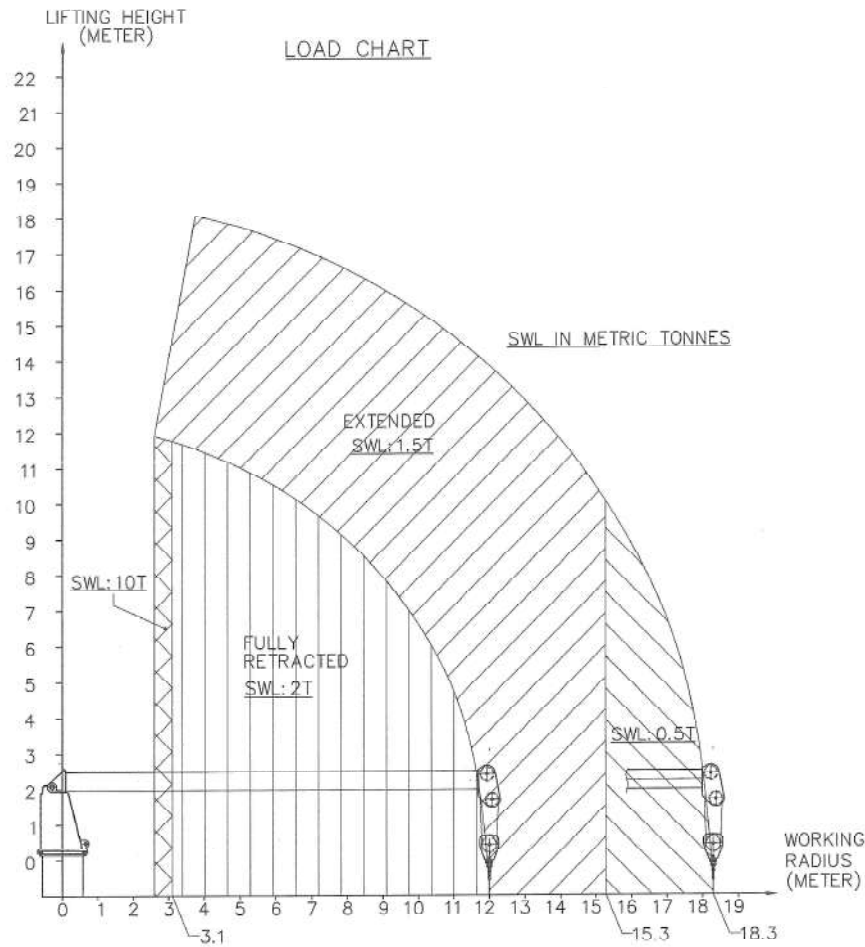
GENERAL TOLERANCES: ACCORDING TO ISO 2768

LINEAR (mm)	RANGE	0.5-3	OVER 3-6	OVER 6-30	OVER 30-120	OVER 120-400	OVER 400-1000	OVER 1000-2000	OVER 2000-4000
	M/C	±0.1	±0.1	±0.2	±0.3	±0.5	±0.8	+1.2	±2
	UN M/C	+0.2	+0.3	±0.5	±0.8	±1.2	±2	±3	±4
ANGULAR (Deg)	RANGE	UP TO 10	OVER 10-50	OVER 50-120	OVER 120-400	OVER 400			
	M/C	±1'	±0'30'	±0'20'	±0'10'	±0'5'			
	UN M/C	±1'30'	±1'	±0'30'	±0'15'	±0'10'			

TITLE : HYDRAULIC TELESCOPIC SHIPBOARD CRANF GENERAL ARRANGEMENT

SCALE 1 : 75 EST. WT.: ~11500 KG

MODEL NO:MG-TC1301-1003-0115-00518-2JE DWG NO:F0308-TC1301-1003-0115-00518-2JE-0 SHT. 1/2



Issued On 09 NOV 2016

Project no:  
F 0308  
FOR PRODUCTION

C	07.11.16	ISSUED FOR CONSTRUCTION	CWC	<i>[Signature]</i>	<i>[Signature]</i>
B	29.07.16	ISSUED FOR APPROVAL	CWC	CZJ	XF
A	-	N.A	-	-	-
REV	DATE	DESCRIPTION	DRAWN	CHK'D	APPR'D



© MACGREGOR PTE. LTD.  
OFFSHORE WINCHES  
(REGISTRATION NUMBER 2013116330)

ADDRESS : No.15 TUKANG INNOVATION DRIVE SINGAPORE 618289  
TEL: (65) 65973888 FAX: (65) 65973513

ALL INFORMATION CONTAINED ON THIS DRAWING IS CONFIDENTIAL AND CANNOT BE USED OR DIVULGED TO A THIRD PARTY WITHOUT PERMISSION.

GENERAL TOLERANCES: ACCORDING TO ISO 2768

LINEAR (mm)	RANGE	0.5-3	OVER 3-6	OVER 6-30	OVER 30-120	OVER 120-400	OVER 400-1000	OVER 1000-2000	OVER 2000-4000
	M/C	±0.1	±0.1	±0.2	±0.3	±0.5	±0.8	±1.2	±2
ANGULAR (Deg)	RANGE	UP TO 10	OVER 10-50	OVER 50-120	OVER 120-400	OVER 400			
	M/C	±1'	±0'30'	±0'20'	±0'10'	±0'5'			
	UN M/C	±1'30'	±1'	±0'30'	±0'15'	±0'10'			

TITLE : HYDRAULIC TELESCOPIC SHIPBOARD CRANE GENERAL ARRANGEMENT			
	ALL DIMENSIONS IN MM UNLESS OTHERWISE STATED	SCALE 1 : 75	EST. WT.: - KG
MODEL NO: MC-TC1301-1003-0115-00518-2JE	DWG NO: F0308-TC1301-1003-0115-00518-2E-0	SHT. 2/2	