

Maint. Utility Vessel / 53.8m / 50pax / 10T Hydraulic Telescopic Crane



Team Clio



Atlantic Maritime Group FZE

www.atlanticnavigation.com

GENERAL PARTICULARS

Year of Build / Place	: 2019 / China
IMO Number	: 9748928
Call Sign	: V7XB5
Flag / Port of Registry	: St Kitts & Nevis/ Basseterre
Class	: ABS
Notation	: ⚠ A1, Offshore Support Vessel (Supply), E, ⚠ AMS
GRT / NRT	: 1273 / 381
Vessel Manager	: Atlantic Maritime Group

DIMENSIONS

Length OA	: 53.80 m
Length BP	: 49.50 m
Breadth	: 13.80 m
Depth	: 5.00 m
Draft (Design)	: 3.00 m
Deadweight	: 1030T

MACHINERY

Main Engine	: 2 x CAT3512C @ 1800RPM Total: 3150 BHP
Main Generators	: 3 x CAT6.6, 170eKW, 440V, 60Hz
Emergency Generator	: 1 x CAT4.4, 56eKW, 440V, 60Hz
Propellers	: 2 x FPP
Bow Thrusters	: 1 x 5T FPP Type (320KW)

FIRE FIGHTING & SAFETY EQUIPMENT

Fi-Fi System (External)	: 1 X 1500m3/Hr pump, driven by main engine : 2 X 600m3/Hr monitors
Rescue Boat & Davit	: 1 x 6 Pax
Lifeboats	: 4 x 25 Persons

DECK MACHINERY & EQUIPMENT

Deck Crane	: EBI Techcrane – Hydraulic Deck Crane with Telescopic Boom : 10T @ 5m : 5T @ 11.5m : 1.5T @ 19m
Capstans	: 5T x 0-15m/Min
Anchors	: 2 x 32mm x 24 length@1080kg
Chains	: 12 Shots each side
Power Sockets	: 4 X 440V and 230v, 3 phase
Search Lights	: 3 X 2000W

CAPACITIES & PERFORMANCE

Fresh Water Tank	: 439 m3
Fuel Oil Tank	: 576 m3
Drill Water / Ballast Tank	: 143 m3
Deck Space	: 235 m2
Design Deck Load	: 4 T / m2
Speed	: 12 knots
Fuel Consumption	: 7.5 m3 / day @ CSR 13 MT / day @ MCR

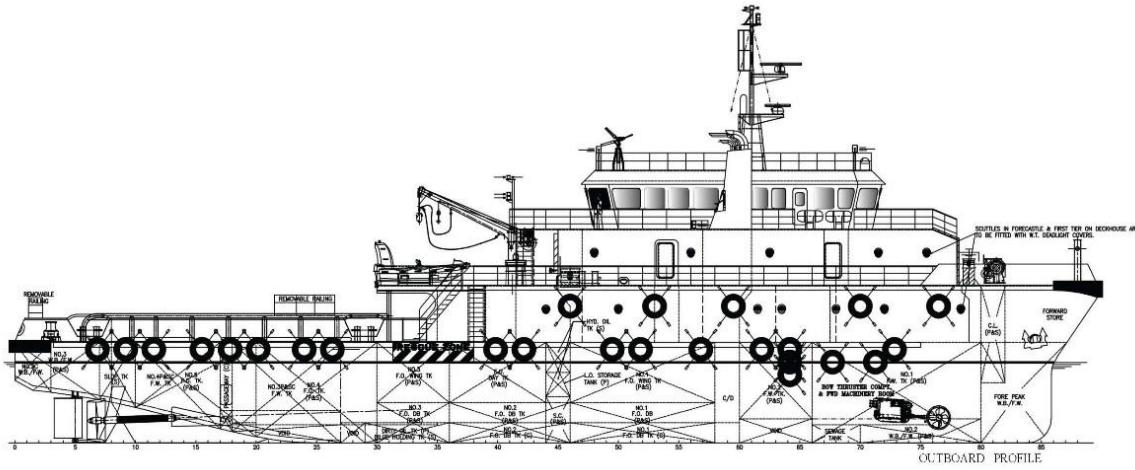
NAVIGATION & COMMUNICATION EQUIPMENT

Fixed VHF	: 2 Nos
Echo Sounder	: 1 No
Navtex	: 1 No
Auto Pilot	: 1 No
Magnetic Compass	: 1 No
Gyro Compass	: 1 No
AIS	: 1 No
GPS	: 1 No
Doppler Log	: 1 No
FBB	: 1 No
GMDSS	: Area A1+A2+A3
Radar	: 2 Nos
EPIRB	: 1 No
SART	: 2 Nos
Intercom/ P.A System	: Yes

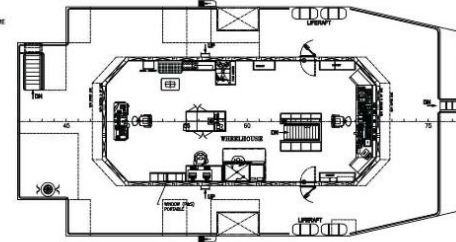
ACCOMMODATION

1 Man Cabin	: 5 Nos
2 Man Cabin	: 1 Nos
3 Man Cabin	: 1 Nos
4 Man Cabin	: 10 Nos
Total	: 50 Person
Hospital	: 1 No
Workshop	: 1 No
Prayer Room	: 1 No
Storage Room	: 1 No
Office	: 1 No

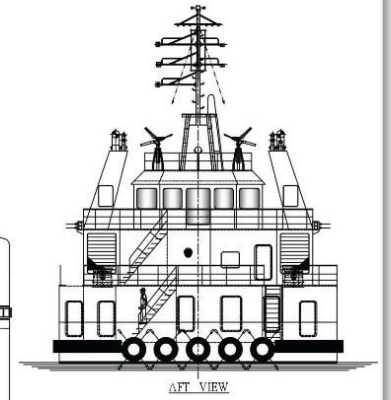
All Cabins are Fully Air Conditioned



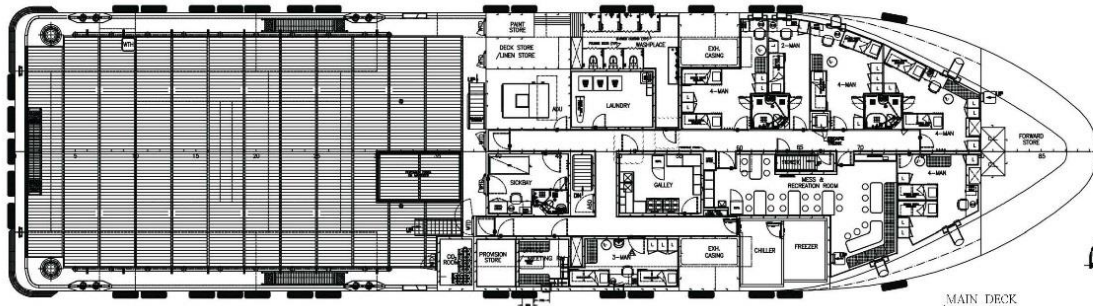
OUTBOARD PROFILE



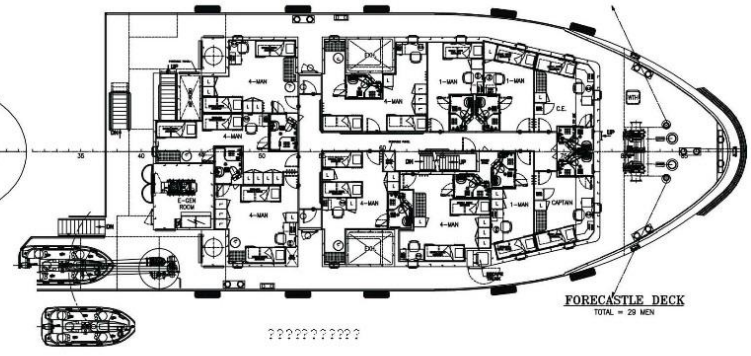
WHIBBLHOUSE DECK



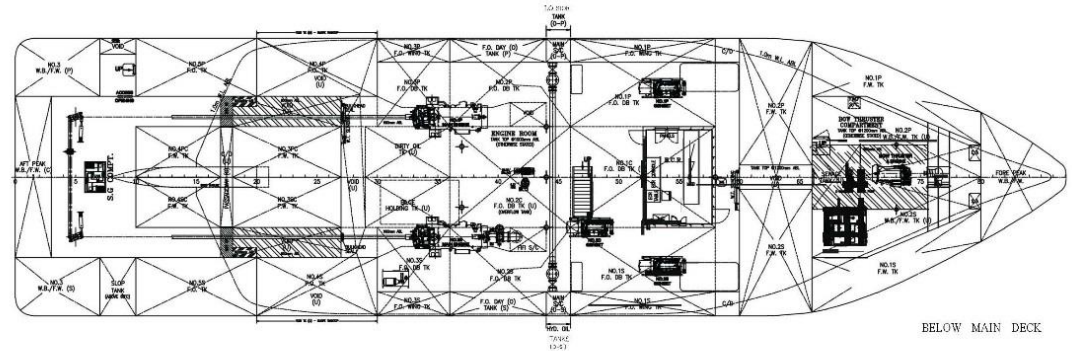
AFT VIEW



MAIN DECK
TOTAL = 21 MEN



FORECASTLE DECK
TOTAL = 29 MEN



BELOW MAIN DECK

PRINCIPAL PARTICULARS

LENGTH OA	53.80m
LENGTH WL	51.50m
BEAM MLD.	13.80m
DEPTH MLD.	5.00m
DRAFT (DESIGN)	3.50m
DRAFT (MAX)	3.00m
COMPLEMENT	50 MEN
FO (BUNKER)	540m ³ (approx.)
DECK AREA	237m ² (approx.)

CLASS	ABS 53.8M WORKMAINTENANCE VESSEL	CLASS NO.	111
DATE	2002/02/03	REV.	01
CLASS	ABS 53.8M WORKMAINTENANCE VESSEL	HULL NO.	40002/4000
SHIP	53.8M WORKMAINTENANCE VESSEL		
GENERAL ARRANGEMENT			
DESIGNER	J. K. G. & S. W. L. L.	DESIGN NO.	VME023-100-001

Particulars are believed to be correct and subject to revision without prior notice.